

MASCOT® WORKWEAR



tested to work

MASCOT® UNIQUE | EN



Everything in one range

MASCOT® UNIQUE is practically a workwear brand in itself. Explore the products, materials and colours that can be combined infinitely. Always with the best fit and optimal freedom of movement!



Advanced technologies

The use of known textile technologies and brands means MASCOT® UNIQUE workwear has some very special benefits. The technologies we use include TENCEL® and CORDURA®. See more on pages 32 and 40.

Trousers in three weight categories

Whether you are in the market for feather-light materials or very hard-wearing and wear-resistant materials, you'll find what you need in MASCOT® UNIQUE. There are three different fabric qualities from which to choose. See more on pages 28-29.

Get an overview of the possibilities in your preferred colours

MASCOT®
UNIQUE



page 6



page 8



page 10



page 12



page 14



A complete programme of tops

When you choose the MASCOT® UNIQUE range, you don't need anything else. The tops include everything from t-shirts to winter jackets. Wear them in layers and be prepared for the weather and temperatures all year round.

For ALL employees

Whatever their trade or taste. Whatever their height or size. MASCOT® UNIQUE offers a broad range of colours, styles and sizes. Trousers and bib & brace overalls can be found in three different leg lengths.





Mix with other ranges

MASCOT's assortment is divided into ranges, each with its own characteristics. Although there are over 600 products in MASCOT's assortment, the colours are the same across the ranges, making it easy to mix and match when you need to find your favourite products in your preferred colour. See all products at www.mascotworkwear.com



The huge range of colourful T-shirts, sweatshirts and polo shirts in the MASCOT® CROSSOVER collection provide a wealth of opportunities to brighten up your dark workwear. Choose a colour to match the colour of your logo, for example.



When you choose a black jacket (MASCOT® Marburg fleece shown here), the details in your combined set make the difference: the orange MASCOT® Orgon polo shirt matches the orange contrasts in the safety footwear, MASCOT® Diran, and the socks, MASCOT® Mongu.

Remember your accessories when you choose trousers (MASCOT® Mannheim shown here). MASCOT offers a wide range of knee pads and belts in the accessory collection MASCOT® COMPLETE. Shown here are the MASCOT® Likasi knee pads and the MASCOT® Congo belt.

Match MASCOT® UNIQUE with basic and accessory products from other MASCOT collections



MASCOT® Bottrop
Polo Shirt 50569-961
page 48



MASCOT® Potsdam
T-shirt 50567-959
page 49



MASCOT® Bielefeld
T-shirt, long-sleeved 50568-959
page 47



MASCOT® Witten
Sweatshirt 50570-962
page 56



MASCOT® Regensburg
Hoodie 50572-963
page 43



MASCOT® Wiesbaden
Hoodie with zipper 50566-963
page 42



MASCOT® Oldenburg
Trousers 12579-442
page 34



MASCOT® Leipzig
Bib & Brace with kneepad pockets
12069-203
page 37




MASCOT® Erlangen
Trousers with kneepad pockets 12179-203
page 44



MASCOT® Dortmund
Trousers 12079-203
page 36



MASCOT® Mannheim
Trousers with kneepad pockets
12679-442
page 32



Combine your MASCOT® UNIQUE products with the rest of MASCOT's comprehensive range. You could match with a jacket from MASCOT® ACCELERATE, which is made from a sturdy and very durable fabric quality. Shown here is jacket 18509.



The wide range of footwear offering full safety allows you to choose your particular favourite. Shown here is the safety shoe F0121, elastic belt 17044 and socks 50455.

A comprehensive range with numerous combination options in red



red/black



MASCOT® Bottrop
Polo Shirt 50569-961
page 48



MASCOT® Potsdam
T-shirt 50567-959
page 49



MASCOT® Marburg
Fleece Jacket 15603-259
page 56



MASCOT® Hannover
Fleece Jacket 16003-302
page 36



MASCOT® Dresden
Softshell Jacket 12002-149
page 44



MASCOT® Bielefeld
T-shirt, long-sleeved 50568-959
page 47



MASCOT® Witten
Sweatshirt 50570-962
page 56



MASCOT® Darmstadt
Winter Jacket 16002-149
page 52



MASCOT® Fulda
Jacket 12209-442
page 35



MASCOT® Mainz
Jacket 12009-203
page 37



MASCOT® Wiesbaden
Hoodie with zipper 50566-963
page 42



MASCOT® Erding
Thermal Jacket 15615-249
page 55



MASCOT® Frankfurt
Winter Jacket 12035-211
page 51



MASCOT® Leipzig
Bib & Brace with kneepad pockets
12069-203
page 37



MASCOT® Augsburg
Bib & Brace with kneepad pockets
12169-442
page 35



MASCOT® Oldenburg
Trousers 12579-442
page 34



MASCOT® Dortmund
Trousers 12079-203
page 36



MASCOT® Mannheim
Trousers with kneepad pockets
12679-442
page 32



MASCOT® UNIQUE
Shorts 18349-230
page 45

If you want single coloured trousers with your two-toned tops (such as the MASCOT® Dresden softshell), then MASCOT® ACCELERATE is a good place to look. Choose for example trousers with elasticated material in them in the same green colour and matching fabric quality from MASCOT® ACCELERATE.



Black is an excellent match for MASCOT's shades of green. Shown here are accessories and basic products in black in the form of this long-sleeved T-shirt 18081, socks 50410 and belt 17044.

Choose safety footwear according to both industry and work situation. Here we have chosen safety boots Fo133.

Combine your way to your favourite set with more than 600 different MASCOT products



green/black



MASCOT® Bottrop
Polo Shirt 50569-961
page 48



MASCOT® Potsdam
T-shirt 50567-959
page 49



MASCOT® Marburg
Fleece Jacket 15603-259
page 56



MASCOT® Hannover
Fleece Jacket 16003-302
page 36



MASCOT® Dresden
Softshell Jacket 12002-149
page 44



MASCOT® Bielefeld
T-shirt, long-sleeved 50568-959
page 47



MASCOT® Witten
Sweatshirt 50570-962
page 56



MASCOT® Darmstadt
Winter Jacket 16002-149
page 52



MASCOT® Fulda
Jacket 12209-442
page 35



MASCOT® Mainz
Jacket 12009-203
page 37



MASCOT® Wiesbaden
Hoodie with zipper 50566-963
page 42



MASCOT® Erding
Thermal Jacket 15615-249
page 55



MASCOT® Frankfurt
Winter Jacket 12035-211
page 51



MASCOT® Leipzig
Bib & Brace with kneepad pockets
12069-203
page 37



MASCOT® Augsburg
Bib & Brace with kneepad pockets
12169-442
page 35



MASCOT® UNIQUE
Shorts 18349-230
page 45



MASCOT® Altona
¾ Length Trousers with kneepad
pockets 14149-442
page 46



MASCOT® Lemberg
Trousers with kneepad pockets
13079-230
page 31



MASCOT® Erlangen
Trousers with kneepad pockets
12179-203
page 44



MASCOT® Dortmund
Trousers 12079-203
page 36



MASCOT® Mannheim
Trousers with kneepad pockets
12679-442
page 32

MASCOT offers a huge range of single colour T-shirts and sweatshirts in various weights and price classes. Shown here are both the short-sleeved and long-sleeved versions of the smart henley T-shirts – MASCOT® Greenwich and MASCOT® Pelham.



Remember the all-important accessories, e.g. CE labelled knee pads (MASCOT® Waterloo), hammer holder (MASCOT® Maputo) and socks (MASCOT® Maseru).

You can match the very hardwearing MASCOT® Lindau 3/4-length trousers with many types of footwear – all according to your industry and needs. For example, these MASCOT® Manaslu safety shoes with Boa® fastening.

Loads of possibilities to mix & match in white, dark anthracite and black.

white/dark anthracite



MASCOT® Bottrop
Polo Shirt 50569-961
page 48



MASCOT® Potsdam
T-shirt 50567-959
page 49



MASCOT® Marburg
Fleece Jacket 15603-259
page 56



MASCOT® Dresden
Softshell Jacket 12002-149
page 44



MASCOT® Darmstadt
Winter Jacket 16002-149
page 52



MASCOT® Fulda
Jacket 12209-442
page 35



MASCOT® Mainz
Jacket 12009-203
page 37



MASCOT® Bielefeld
T-shirt, long-sleeved 50568-959
page 47



MASCOT® Witten
Sweatshirt 50570-962
page 56



MASCOT® Amberg
Sweatshirt with zipper
50565-963
page 32



MASCOT® Erding
Thermal Jacket 15615-249
page 55



MASCOT® Frankfurt
Winter Jacket 12035-211
page 51



MASCOT® Wiesbaden
Hoodie with zipper 50566-963
page 42



MASCOT® UNIQUE
Shorts 18349-230
page 45



MASCOT® Lindau
¾ Length Trousers with kneepad
pockets and holster pockets
14349-442
page 47



MASCOT® Augsburg
Bib & Brace with kneepad
pockets 12169-442
page 35



MASCOT® Bremen
Trousers with kneepad pockets
and holster pockets 14031-203
page 42



MASCOT® Lemberg
Trousers with kneepad pockets
13079-230
page 31



MASCOT® Mannheim
Trousers with kneepad pockets
12679-442
page 32



MASCOT® Altona
¾ Length Trousers with kneepad
pockets 14149-442
page 46



MASCOT® Erlangen
Trousers with kneepad pockets
12179-203
page 44



MASCOT® UNIQUE
Trousers with kneepad pockets
and holster pockets 17631-442
page 43



MASCOT® UNIQUE
Trousers 18678-230
page 39



MASCOT® UNIQUE
Trousers 18688-230
page 39



MASCOT® Leipzig
Bib & Brace with kneepad
pockets 12069-203
page 37

MASCOT® Calais T-shirt is available in 27 different colours with which to mix & match. Shown here under the MASCOT® Amberg.



Remember safety footwear and reduce the risk of slipping, falling and other accidents. Select by style and industry from MASCOT's enormous range; for example, F0301. The socks are MASCOT® Tanga.

Jeans are available in many versions and now including versions that offer perfect freedom of movement. MASCOT® Ferrol jeans break with the traditional uniform appearance but retain all the functionality of good workwear trousers.

Give MASCOT® UNIQUE new colours with basic and accessory products from other MASCOT collections

1809

dark anthracite/black

MASCOT® UNIQUE



MASCOT® Bottrop
Polo Shirt 50569-961
page 48



MASCOT® Potsdam
T-shirt 50567-959
page 49



MASCOT® Bielefeld
T-shirt, long-sleeved 50568-959
page 47



MASCOT® Witten
Sweatshirt 50570-962
page 56



MASCOT® Regensburg
Hoodie 50572-963
page 43



MASCOT® Wiesbaden
Hoodie with zipper
50566-963
page 42



MASCOT® Amberg
Sweatshirt with zipper
50565-963
page 32



MASCOT® Magdeburg
Polo Sweatshirt 50610-962
page 46



MASCOT® Marburg
Fleece Jacket 15603-259
page 56



MASCOT® Hannover
Fleece Jacket 16003-302
page 36



MASCOT® Dresden
Softshell Jacket 12002-149
page 44



MASCOT® UNIQUE
Fleece Jumper with zipper
18603-316
page 58



MASCOT® UNIQUE
Thermal Gilet 18665-318
page 59



MASCOT® UNIQUE
Thermal Jacket 18615-318
page 59



MASCOT® UNIQUE
Outer Shell Jacket
18601-411
page 51



MASCOT® Darmstadt
Winter Jacket 16002-149
page 52



MASCOT® Erding
Thermal Jacket 15615-249
page 55



MASCOT® Mainz
Jacket 12009-203
page 37



MASCOT® Fulda
Jacket 12209-442
page 35



MASCOT® Frankfurt
Winter Jacket 12035-211
page 51



MASCOT® Altona
¾ Length Trousers with
kneepad pockets 14149-442
page 46



MASCOT® UNIQUE
Shorts 18349-230
page 45



MASCOT® Bremen
Trousers with kneepad
pockets and holster pockets
14031-203
page 42



MASCOT® Ingolstadt
Trousers with thigh
pockets 16279-230
page 48



MASCOT® Lemberg
Trousers with kneepad
pockets 13079-230
page 31



MASCOT® UNIQUE
Trousers 18678-230
page 39



MASCOT® UNIQUE
Trousers 18688-230
page 39



MASCOT® Oldenburg
Trousers 12579-442
page 34



MASCOT® UNIQUE
Trousers with kneepad
pockets and holster
pockets 17631-442
page 43



MASCOT® Mannheim
Trousers with kneepad
pockets 12679-442
page 32



MASCOT® Dortmund
Trousers 12079-203
page 36



MASCOT® Erlangen
Trousers with kneepad
pockets 12179-203
page 44



MASCOT® Leipzig
Bib & Brace with kneepad
pockets 12069-203
page 37



MASCOT® Augsburg
Bib & Brace with kneepad
pockets 12169-442
page 35

MASCOT® Palencia is a strong contender for a light jacket with unique insulation (under it is the MASCOT® Witten sweatshirt). If the jacket is to be matched with black safety footwear, the obvious choice is MASCOT® Ultar, which combines comfort with safety.



MASCOT® COMPLETE offers you a wide range of socks, headwear, belts, hanging pockets and other accessories. MASCOT® Zanzibar belt and MASCOT® Tribeca hat have been chosen for this set.



Wherever you look in MASCOT's enormous range, you will find products with CORDURA® reinforcements, which extend the life of the product. One example is the MASCOT® Lemberg trousers, shown here.

MASCOT's broad range has targeted products for both craftsmen and industry

5509

light khaki/black

MASCOT® UNIQUE



MASCOT® Bottrop
Polo Shirt 50569-961
page 48



MASCOT® Potsdam
T-shirt 50567-959
page 49



MASCOT® Erding
Thermal Jacket 15615-249
page 55



MASCOT® Dresden
Softshell Jacket 12002-149
page 44



MASCOT® Bielefeld
T-shirt, long-sleeved 50568-959
page 47



MASCOT® Witten
Sweatshirt 50570-962
page 56



MASCOT® Fulda
Jacket 12209-442
page 35



MASCOT® Mainz
Jacket 12009-203
page 37



MASCOT® Regensburg
Hoodie 50572-963
page 43



MASCOT® Wiesbaden
Hoodie with zipper 50566-963
page 42



MASCOT® Frankfurt
Winter Jacket 12035-211
page 51



MASCOT® UNIQUE
Shorts 18349-230
page 45



MASCOT® Lindau
¾ Length Trousers with kneepad
pockets and holster pockets
14349-442
page 47



MASCOT® Bremen
Trousers with kneepad pockets
and holster pockets 14031-203
page 42



MASCOT® Lemberg
Trousers with kneepad pockets
13079-230
page 31



MASCOT® Leipzig
Bib & Brace with kneepad
pockets 12069-203
page 37



MASCOT® Augsburg
Bib & Brace with kneepad
pockets 12169-442
page 35



MASCOT® Erlangen
Trousers with kneepad pockets
12179-203
page 44



MASCOT® UNIQUE
Trousers with kneepad pockets
and holster pockets 17631-442
page 43



MASCOT® Mannheim
Trousers with kneepad pockets
12679-442
page 32

Royal blue products with dark navy contrasts offer many possible stylish combinations with single colour products in dark navy. Shown here are the single-colour MASCOT® Columbus jacket and MASCOT® Houston trousers from the MASCOT® INDUSTRY collection.



Shoes with small contrast elements complete the set. This is MASCOT® Trivior, which has ultra slip resistant soles. Don't forget the accessories: MASCOT® Joba cap and MASCOT® Kananga ID cardholder.

The MASCOT® Magdeburg polo sweatshirt can be combined with a moisture-wicking undershirt as the inner layer, such as MASCOT® Parada.

Supplement royal blue with a comprehensive range in dark navy; a perfect match



royal/dark navy

MASCOT® UNIQUE



MASCOT® Bottrop
Polo Shirt 50569-961
page 48



MASCOT® Potsdam
T-shirt 50567-959
page 49



MASCOT® Bielefeld
T-shirt, long-sleeved 50568-959
page 47



MASCOT® Witten
Sweatshirt 50570-962
page 56



MASCOT® Regensburg
Hoodie 50572-963
page 43



MASCOT® Wiesbaden
Hoodie with zipper
50566-963
page 42



MASCOT® Amberg
Sweatshirt with zipper
50565-963
page 32



MASCOT® Magdeburg
Polo Sweatshirt 50610-962
page 46



MASCOT® Marburg
Fleece Jacket 15603-259
page 56



MASCOT® Hannover
Fleece Jacket 16003-302
page 36



MASCOT® UNIQUE
Fleece Jumper with zipper
18603-316
page 58



MASCOT® UNIQUE
Thermal Gilet 18665-318
page 59



MASCOT® UNIQUE
Thermal Jacket 18615-318
page 59



MASCOT® UNIQUE
Outer Shell Jacket 18601-411
page 51



MASCOT® Dresden
Softshell Jacket 12002-149
page 44



MASCOT® Darmstadt
Winter Jacket 16002-149
page 52



MASCOT® Erding
Thermal Jacket 15615-249
page 55



MASCOT® Mainz
Jacket 12009-203
page 37



MASCOT® Fulda
Jacket 12209-442
page 35



MASCOT® Frankfurt
Winter Jacket 12035-211
page 51



MASCOT® Ingolstadt
Trousers with thigh pockets
16279-230
page 48



MASCOT® Lemberg
Trousers with kneepad
pockets 13079-230
page 31



MASCOT® UNIQUE
Trousers 18678-230
page 39



MASCOT® UNIQUE
Trousers 18688-230
page 39



MASCOT® Altona
¾ Length Trousers with
kneepad pockets 14149-442
page 46



MASCOT® UNIQUE
Shorts 18349-230
page 45



MASCOT® Oldenburg
Trousers 12579-442
page 34



MASCOT® Mannheim
Trousers with kneepad
pockets 12679-442
page 32



MASCOT® Dortmund
Trousers 12079-203
page 36



MASCOT® Erlangen
Trousers with kneepad
pockets 12179-203
page 44



MASCOT® Leipzig
Bib & Brace with kneepad
pockets 12069-203
page 37



MASCOT® Augsburg
Bib & Brace with kneepad
pockets 12169-442
page 35

The MASCOT® Erding jacket is not just smart looking: its unique insulation gives it a head start when it comes to comfort.



Dark navy and royal blue are made for each other and can be combined in countless ways within the MASCOT collection. Combine single colour with two-tone products, or mix the two-tone products as seen here with the MASCOT® Erlangen trousers.

With more than 600 different products in the range, you can handle any situation. Even shoes and accessories. Here you can see the F0114 safety footwear, the MASCOT® Kisa hat and the MASCOT® Manica socks.

Create your corporate look — countless combinations from which to choose

01011

dark navy/royal



MASCOT® Fulda
Jacket 12209-442
page 35



MASCOT® Erlangen
Trousers with kneepad pockets 12179-203
page 44



MASCOT® Oldenburg
Trousers 12579-442
page 34



MASCOT® Leipzig
Bib & Brace with kneepad pockets
12069-203
page 37



MASCOT® Augsburg
Bib & Brace with kneepad pockets
12169-442
page 35



MASCOT® Dortmund
Trousers 12079-203
page 36



MASCOT® Mannheim
Trousers with kneepad pockets 12679-442
page 32

Colour 888 anthracite is a very popular colour across professions. In MASCOT's assortment you will find a large selection of products in anthracite grey. See even more at www.mascotworkwear.com



The lightweight MASCOT® Ingolstadt 16279 trousers in anthracite can be combined with products in almost every colour. Shown here are T-shirt 17782, elastic belt 17044, reversible hoodie 15146, safety shoes with Boa® closure F0122, and moisture wicking socks 50411.

Numerous combination possibilities with anthracite grey

88809

anthracite/black

MASCOT® UNIQUE



MASCOT® Bottrop
Polo Shirt 50569-961
page 48



MASCOT® Potsdam
T-shirt 50567-959
page 49



MASCOT® Hannover
Fleece Jacket 16003-302
page 36



MASCOT® Hagen
Gilet 12154-442
page 34



MASCOT® Fulda
Jacket 12209-442
page 35



MASCOT® Witten
Sweatshirt 50570-962
page 56



MASCOT® Dresden
Softshell Jacket 12002-149
page 44



MASCOT® Darmstadt
Winter Jacket 16002-149
page 52



MASCOT® Frankfurt
Winter Jacket 12035-211
page 51



MASCOT® Stuttgart
Shorts 12049-442
page 49



MASCOT® UNIQUE
Shorts 18349-230
page 45



MASCOT® Oldenburg
Trousers 12579-442
page 34



MASCOT® Ingolstadt
Trousers with thigh pockets 16279-230
page 48



MASCOT® Lemberg
Trousers with kneepad pockets 13079-230
page 31



MASCOT® Mannheim
Trousers with kneepad pockets 12679-442
page 32



MASCOT® Augsburg
Bib & Brace with kneepad pockets 12169-442
page 35

Dress yourself in layers so you are always ready for the situation and temperature. For example, pair the MASCOT® Calais T-shirt with a warm microfleece, such as MASCOT® Reims, for cool surroundings. Top it all off and keep the wind and rain out with the MASCOT® Frankfurt pilot jacket.



Well-designed pockets are indispensable in all industries. Choose trousers such as 18179 from MASCOT® ACCELERATE, when you need enough room for tools and optimum comfort.

The safety shoe F0115 has a composite toe cap and is completely metal-free. The composite material does not conduct heat or cold, so the composite toe cap provides extra comfort in both hot and cold surroundings. Choose from various metal-free styles in MASCOT® FOOTWEAR.

Combine colours, styles and functions from the entire MASCOT range



MASCOT® Erding
Thermal Jacket 15715-249
page 55



MASCOT® Marburg
Fleece Jacket 15703-259
page 56



MASCOT® Hannover
Fleece Jacket 16103-302
page 36



MASCOT® UNIQUE
Fleece Jumper with zipper
18603-316
page 58



MASCOT® UNIQUE
Outer Shell Jacket 18601-411
page 51



MASCOT® Dresden
Softshell Jacket 12102-149
page 44



MASCOT® Mainz
Jacket 12109-203
page 37



MASCOT® UNIQUE
Thermal Jacket 18615-318
page 59



MASCOT® UNIQUE
Thermal Gilet 18665-318
page 59



MASCOT® Hagen
Gilet 12154-442
page 34



MASCOT® Frankfurt
Winter Jacket 12135-211
page 51



MASCOT® Altona
¾ Length Trousers with kneepad
pockets 14249-442
page 46



MASCOT® Bremen
Trousers with kneepad pockets
and holster pockets 14131-203
page 42



MASCOT® UNIQUE
Trousers 18778-230
page 39



MASCOT® UNIQUE
Trousers 18788-230
page 39



MASCOT® Ingolstadt
Trousers with thigh pockets 16179-230
page 48



MASCOT® Lemberg
Trousers with kneepad pockets
16079-230
page 31



MASCOT® Erlangen
Trousers with kneepad pockets
12479-203
page 44



MASCOT® UNIQUE
Trousers with kneepad pockets
and holster pockets 17731-442
page 43



MASCOT® Mannheim
Trousers with kneepad pockets
12779-442
page 32

Black is easy to combine with virtually any colour. Shown here are the black MASCOT® Ingolstadt trousers which are especially suitable for warm surroundings due to their low weight and high cotton content.



The MASCOT® Corby hooded zippered sweatshirt is certified class 3, EN ISO 20471, providing the highest levels of protection when worn alone. However, here we have pulled the matching MASCOT® Gandia over it.

Never compromise with safety footwear. Shown here is the safety shoe Fo124, which matches the fluorescent products MASCOT® Ripon cap and MASCOT® Brits braces, from the MASCOT® COMPLETE accessory range.

Find sets that offer high visibility and safety in MASCOT's comprehensive range of safety clothing



MASCOT® UNIQUE
Fleece Jumper with zipper
18603-316
page 58



MASCOT® Erding
Thermal Jacket 15715-249
page 55



MASCOT® Marburg
Fleece Jacket 15703-259
page 56



MASCOT® Hannover
Fleece Jacket 16103-302
page 36



MASCOT® UNIQUE
Outer Shell Jacket 18601-411
page 51



MASCOT® Dresden
Softshell Jacket 12102-149
page 44



MASCOT® UNIQUE
Thermal Jacket 18615-318
page 59



MASCOT® UNIQUE
Thermal Gilet 18665-318
page 59



MASCOT® Hagen
Gilet 12154-442
page 34



MASCOT® Mainz
Jacket 12109-203
page 37



MASCOT® Frankfurt
Winter Jacket 12135-211
page 51



MASCOT® Altona
¾ Length Trousers with kneepad
pockets 14249-442
page 46



MASCOT® Lindau
¾ Length Trousers with kneepad
pockets and holster pockets
14449-442
page 47



MASCOT® Bremen
Trousers with kneepad pockets
and holster pockets 14131-203
page 42



MASCOT® UNIQUE
Trousers 18778-230
page 39



MASCOT® UNIQUE
Trousers 18788-230
page 39



MASCOT® Ingolstadt
Trousers with thigh pockets 16179-230
page 48



MASCOT® Lemberg
Trousers with kneepad pockets
16079-230
page 31



MASCOT® Erlangen
Trousers with kneepad pockets
12479-203
page 44



MASCOT® UNIQUE
Trousers with kneepad pockets
and holster pockets 17731-442
page 43



MASCOT® Mannheim
Trousers with kneepad pockets
12779-442
page 32

Trousers in MASCOT® UNIQUE

In MASCOT® UNIQUE you can select trousers in three different types of fabric. Each fabric quality has been developed to bring something specific to the particular type of work situation. Is it, therefore, important to choose the fabric based on your tasks, the temperature and the weather. Find some ideas here on what to look for when you choose your work trousers.

SUPER LIGHTWEIGHT TWILL



LIGHTWEIGHT



TWILL



STRONG TWILL WITH TENCEL®



Quality number: 230
Composition: 50%cotton/50%polyester
Weight per m²: 205 grams
Special advantages: Lightweight

The lightest trousers in the assortment

With a weight at only 205 g/m² this is the lightest trouser-quality in MASCOT's assortment. The material has a high content of cotton compared to other trouser-qualities. Cotton can absorb a lot of moisture, while it conducts heat away from the body. It also makes the material especially comfortable to wear against the skin. Polyester in the material especially adds durability. Despite the low weight, trousers in this fabric quality has a very high durability. CORDURA®-reinforcements on exposed areas also increase durability.

Quality number: 442
Composition: 65% polyester/35%cotton
Weight per m²: 270 grams
Special advantages: Lightweight material with high durability

Lightweight workwear for industry and construction

For industry workers and some tradesmen, lightweight and soft workwear is essential. Fabric quality 442 is both lightweight and extremely durable. It keeps its shape and colour even after being washed repeatedly. Fabric quality 442 is one of the most favoured trouser fabrics, especially by industry, and as such, you will also find a large selection of two-toned products in fabric quality 442, suitable for industrial laundering, in MASCOT® INDUSTRY and MASCOT® IMAGE.

Quality number: 203
Composition: 70% polyester/30% lyocell (TENCEL®),
Weight per m²: 340 grams
Special advantages: Soft, durable and cooling

Durable and comfortable workwear for tradesmen

Imagine a fabric that is durable, extremely soft and at the same time cooling and moisture wicking. This is the feeling you'll have from MASCOT's fabric in quality 203. The mix between polyester and TENCEL® provides a fabric with unique properties. TENCEL® is a 100% natural fibre derived from trees. When used in workwear, TENCEL® is temperature controlling and moisture wicking, and the fabric seems soft, smooth and cooling against the skin. The special weaving method (cavalry twill) gives fabric quality 203 a smart, robust look. And it is suitable for industrial laundering. Choose fabric quality 203 when your profession demands workwear that is comfortable to wear and has a long lifespan.

The lightest trousers in the assortment

With a weight at only 205 g/m² this is the lightest trouser fabric quality in MASCOT's assortment. The fabric is made from 50% cotton and 50% polyester. The high content of cotton makes the trousers comfortable, breathable and soft against the skin. Polyester in the material adds durability. And despite the low weight, trousers in this fabric quality have a very high durability.

Many spacious pockets

The trousers are equipped with lots of pockets to store all your items: front pockets, back pockets, a thigh pocket, ruler pocket and pen pocket. One front pocket has an inner pocket suited for a phone. Alternatively, the thigh pocket has also room for a phone.

Flexible kneepad pockets with high durability

The kneepad pockets are adjustable and made from durable CORDURA®, proven to be seven times stronger than cotton. The kneepads are inserted from above and the pockets are closed with flap and hook and loop fastening, so they don't collect dirt.

Flexibility and freedom of movement

The trousers are designed to follow and support all of your movements. This is evident through the use of a low waist with form-cut waistband to ensure that the trousers fit correctly at the back without gaps, even when bending or squatting. The ergonomically formed trouser legs ensure that nothing tightens or bothers.

Durable seams and details

Even though the fabric is lightweight, the durability is high with triple-stitched seams and other features. An extra layer of fabric is used to reinforce the pockets that are used the most, where the pockets are attached. The pocket openings at the back pockets and front pockets are also reinforced with CORDURA®.





Trousers with a low weight and high durability



1809



0309



0618



5509



11010



88809



010



09



LIGHTWEIGHT



TRIPLE SEAMS



ERGONOMIC FIT



KNEE PAD POCKET



REFLECTORS



CORDURA®
FABRIC

MASCOT® Lemberg | Trousers with CORDURA® kneepad pockets, extra lightweight

Product number: **13079-230, Two-tone**

Product number: **16079-230, One-tone**

50% cotton/50% polyester - 205 g/m²

When using MASCOT® Waterloo kneepads, the requirements according to EN 14404 are met.

Leg length and size: 76 cm: C 46-C 56 • 82 cm: C 42-C 68 • 90 cm: C 46-C 62

- Durable triple stitched seams on leg and crotch extend product life.
- Low waist with form-cut waistband ensures comfort and freedom of movement.
- Ergonomic fit to suit the shape of your legs with reinforced gusset on the inside of the legs and crotch.
- Top loading durable CORDURA® reinforced adjustable kneepad pockets, with flap so they don't collect dirt.
- Extra visibility with the help of reflectors.



0618

1809

11010



MASCOT® Amberg | Sweatshirt with zipper, modern fit

Product number: **50565-963**

60% cotton/40% polyester - 340 g/m²

Tested in accordance with EN ISO 15797.

Size: XS-4XL

- Modern, close fit with great freedom of movement.
- Ribbed collar.
- Zip right through.
- Front pockets.
- Ribbed waist and cuffs.
- Good space for placement of company logo.



0918

0209

0309

0618

1809



5509

01011

11010

88809



010

09



LIGHTWEIGHT

TRIPLE SEAMS

ERGONOMIC FIT

KNEE PAD POCKET

REFLECTORS



MASCOT® Mannheim | Trousers with CORDURA® kneepad pockets, lightweight

Product number: **12679-442, Two-tone**

Product number: **12779-442, One-tone**

65% polyester/35% cotton - 270 g/m²

Tested in accordance with EN ISO 15797. When using MASCOT® Waterloo kneepads, the requirements according to EN 14404 are met.

Leg length and size: 76 cm: C 46-C 56 • 82 cm: C 42-C 68 • 90 cm: C 46-C 62

- Ergonomic fit to suit the shape of your legs with reinforced gusset on the inside of the legs and crotch.
- Durable triple stitched seams on leg and crotch extend product life.
- Integrated phone pocket in the right pocket.
- Top loading durable CORDURA® reinforced adjustable kneepad pockets, with flap so they don't collect dirt.
- Extra visibility with the help of reflectors.

CORDURA®
F A B R I C

CORDURA® increases durability

High durability is crucial when you are working at a fast pace. MASCOT ensures durability by using lots of CORDURA® fabric on all the exposed places, such as kneepad pockets, holster pockets and ruler pockets. CORDURA® fabric is in fact seven times stronger than cotton.



Sweatshirt with zipper, 50565-963
Trousers with kneepad pockets, 12679-442
Belt, 03044-990
Knee-pads, 00418-100
Safety Shoe, F0112-909
See all products at www.mascotworkwear.com



010

09

88809



LIGHTWEIGHT



TRIPLE SEAMS



REFLECTORS



MASCOT® Hagen | Gilet, lightweight

Product number: **12254-442, Two-tone**

Product number: **12154-442, One-tone**

65% polyester/35% cotton - 270 g/m²

Tested in accordance with EN ISO 15797.

Size: XS-4XL

- Durable triple stitched seams that extend the product life.
- Easy access to phone pocket inside the breast pocket.
- Good space for placement of company logo.
- Extra protection against the cold with an extended back.
- Extra visibility with the help of reflectors.



0918

0209

1809



01011

11010

88809



LIGHTWEIGHT



TRIPLE SEAMS



ERGONOMIC FIT



REFLECTORS



MASCOT® Oldenburg | Trousers, lightweight

Product number: **12579-442**

65% polyester/35% cotton - 270 g/m²

Tested in accordance with EN ISO 15797.

Leg length and size: 76 cm: C 42-C 56 • 82 cm: C 42-C 68 • 90 cm: C 46-C 62

- Ergonomic fit to suit the shape of your legs with reinforced gusset on the inside of the legs and crotch.
- Durable triple stitched seams on leg and crotch extend product life.
- Integrated phone pocket in the right pocket.
- Optimized ruler pocket with extra freedom of movement, double bottom and pen pocket.
- Extra visibility with the help of reflectors.

The same, just more durable?

Find nearly identical styles in a sturdier quality on the next page.





MASCOT® Fulda | Jacket, lightweight

Product number: **12209-442**

65% polyester/35% cotton - 270 g/m²

Tested in accordance with EN ISO 15797.

Size: XS-4XL

- Durable triple stitched seams that extend the product life.
- Form cut sleeves with great freedom of movement.
- Slightly extended back.
- Slightly rounded bottom edge allows perfect freedom of movement and easy access to front pockets.
- Extra visibility with the help of reflectors.



ProWash® **CORDURA®**
EN ISO 15797 F A B R I C

MASCOT® Augsburg | Bib & Brace with kneepad pockets, lightweight

Product number: **12169-442**

65% polyester/35% cotton - 270 g/m²

Tested in accordance with EN ISO 15797. When using MASCOT® Waterloo kneepads, the requirements according to EN 14404 are met.

Leg length and size: 76 cm: C 46-C 56 • 82 cm: C 42-C 68 • 90 cm: C 46-C 62

- Durable triple stitched seams on leg and crotch extend product life.
- Ergonomic fit to suit the shape of your legs with reinforced gusset on the inside of the legs and crotch.
- Top loading durable CORDURA® reinforced adjustable kneepad pockets, with flap so they don't collect dirt.
- Adjustable kneepad pockets so kneepads can be optimally placed on the knee.
- Extra visibility with the help of reflectors.



MASCOT® Hannover | Fleece Jacket, extended back

Product number: **16003-302, Two-tone**

Product number: **16103-302, One-tone**

100% polyester - 270 g/m²

Size: XS-4XL

- Ergonomically shaped sleeves are designed to follow the arms' natural movements.
- Elastic at cuffs and waist.
- Fastening with zip and internal storm flap, so the wind is kept out.
- Extra protection against the cold with an extended back.
- Extra visibility with the help of reflectors.



MASCOT® Dortmund | Trousers, high durability

Product number: **12079-203**

70% polyester/30% lyocell (TENCEL®) - 340 g/m²

Tested in accordance with EN ISO 15797.

Leg length and size: 82 cm: C 42-C 68 • 90 cm: C 46-C 62

- Contains TENCEL® which makes the fabric cooler, softer and highly moisture absorbing.
- Durable triple stitched seams on leg and crotch extend product life.
- Waist band formed following the body's anatomy so that it supports in all working positions.
- Ergonomic fit to suit the shape of your legs with reinforced gusset on the inside of the legs and crotch.
- Extra visibility with the help of reflectors.

The same, just lighter?

Find nearly identical styles in a lighter fabric on the previous page.





MASCOT® Mainz | Jacket, high durability

Product number: **12009-203, Two-tone**

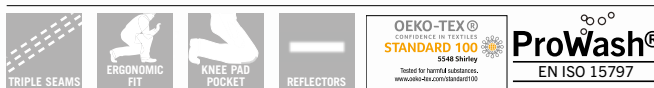
Product number: **12109-203, One-tone**

70% polyester/30% lyocell (TENCEL®) - 340 g/m²

Tested in accordance with EN ISO 15797.

Size: XS-4XL

- Contains TENCEL® which makes the fabric cooler, softer and highly moisture absorbing.
- Durable triple stitched seams that extend the product life.
- Easy access to phone pocket inside the breast pocket.
- Form cut sleeves with great freedom of movement.
- Extra visibility with the help of reflectors.



CORDURA
FABRIC

MASCOT® Leipzig | Bib & Brace with kneepad pockets, high durability

Product number: **12069-203**

70% polyester/30% lyocell (TENCEL®) - 340 g/m²

Tested in accordance with EN ISO 15797. When using MASCOT® Waterloo kneepads, the requirements according to EN 14404 are met.

Leg length and size: 76 cm: C 46-C 56 • 82 cm: C 42-C 68 • 90 cm: C 46-C 62

- Contains TENCEL® which makes the fabric cooler, softer and highly moisture absorbing.
- Durable triple stitched seams on leg and crotch extend product life.
- Ergonomic fit to suit the shape of your legs with reinforced gusset on the inside of the legs and crotch.
- Top loading durable CORDURA® reinforced adjustable kneepad pockets, with flap so they don't collect dirt.
- Extra visibility with the help of reflectors.



DIAMOND FIT



PEARL FIT



0618

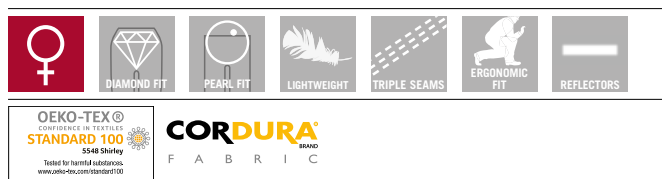
1809

11010



010

09



MASCOT® UNIQUE | Trousers, ladies fit, extra lightweight

Product number: **18678-230, Two-tone, DIAMOND**

Product number: **18688-230, Two-tone, PEARL**

Product number: **18778-230, One-tone, DIAMOND**

Product number: **18788-230, One-tone, PEARL**

50% cotton/50% polyester - 205 g/m²

Leg length and size: 76 cm: C 34-C 56 • 82 cm: C 34-C 56

- Diamond fit is especially designed for women with a difference of more than 20 centimetres between their waist and hip measurements.
- Pearl fit is especially designed for women with a difference of less than 20 centimetres between their waist and hip measurements.
- Light material suited to warm surroundings.
- Durable triple stitched seams on leg and crotch extend product life.
- Low waist with form-cut waistband ensures comfort and freedom of movement.
- Reinforced back pockets and ruler pocket.
- Extra visibility with the help of reflectors.

Two newly developed fits for women

The MASCOT® UNIQUE range includes trousers for women in two different fits: DIAMOND and PEARL.

The difference between the two fits is mainly the relation between the waist and hip measurements.



DIAMOND: Bigger difference between the hip and waist measurements (more than 20 cm difference).



PEARL: Slight difference between the hip and waist measurements (less than 20 cm difference).

Huge study into the fit for women

Prior to the launch, a comprehensive study was undertaken into fits for women. Measurements were taken from a large number of women across various industries, with these many thousands of measurements then being used to develop two whole new fits that are completely updated for the female bodies of today, and entirely unique to MASCOT. We have named these two new fits DIAMOND and PEARL. These new fits have similarly undergone thorough testing in a range of different industries.

Trousers that don't have a women's variant are designed so that they also fit women. Always try the trousers first to find the ones that best suit you.



Stay warm with CLIMA-SCOT® lining

Benefit from a lining of the brand CLIMASCOT® Lightweight Insulation. Besides having a high insulating power, CLIMASCOT® gives you a breathable lightweight material that takes up very little room when compressed. The environment has also been considered with CLIMASCOT®, as it is partially made from recycled materials.



CLIMASCOT®

Lightweight Insulation



RECYCLED CONTENT

OEKO-TEX®
CONFIDENCE IN TEXTILES
STANDARD 100
5548 Shirley



Tested for harmful substances.
www.oeko-tex.com/standard100

Health label for textiles

Oeko-Tex® certification means it has been tested and is proven safe to use in clothing that is in contact with the skin. The certification guarantees that any potential health risk in connection with the product is minimised. It is, in other words, your guarantee that the harmful chemicals that could be left in the finished product do not exceed the permitted values. All MASCOT® UNIQUE products are tested and certified according to Oeko-Tex®.



MASCOT® Wiesbaden | Hoodie with zipper, modern fit

Product number: **50566-963**

60% cotton/40% polyester - 340 g/m²

Tested in accordance with EN ISO 15797.

Size: XS-4XL

- Modern, close fit with great freedom of movement.
- Hood with lining.
- Zip right through.
- Front pockets.
- Ribbed waist and cuffs.
- Good space for placement of company logo.



0618

1809

5509

010

09



MASCOT® Bremen | Trousers with CORDURA® kneepad pockets and holster pockets, high durability

Product number: **14031-203, Two-tone**

Product number: **14131-203, One-tone**

70% polyester/30% lyocell (TENCEL®) - 340 g/m²

Tested in accordance with EN ISO 15797. When using MASCOT® Waterloo kneepads, the requirements according to EN 14404 are met.

Leg length and size: 76 cm: C 46-C 56 • 82 cm: C 42-C 68 • 90 cm: C 46-C 62

- Contains TENCEL® which makes the fabric cooler, softer and highly moisture absorbing.
- Durable triple stitched seams on leg and crotch extend product life.
- Ergonomic fit to suit the shape of your legs with reinforced gusset on the inside of the legs and crotch.
- Holster pockets of durable CORDURA® with extra pockets for tools.
- Top loading durable CORDURA® reinforced adjustable kneepad pockets, with flap so they don't collect dirt.





MASCOT® Regensburg | Hoodie, modern fit

Product number: **50572-963**

60% cotton/40% polyester - 340 g/m²

Tested in accordance with EN ISO 15797.

Size: XS-4XL

- Modern, close fit with great freedom of movement.
- Hood with lining.
- Front pockets.
- Ribbed waist and cuffs.
- Good space for placement of company logo.



0618 1809 5509 010 09



MASCOT® UNIQUE | Trousers with CORDURA® kneepad pockets and holster pockets, lightweight

Product number: **17631-442, Two-tone**

Product number: **17731-442, One-tone**

65% polyester/35% cotton - 270 g/m²

Tested in accordance with EN ISO 15797. When using MASCOT® Waterloo kneepads, the requirements according to EN 14404 are met.

Leg length and size: 76 cm: C 46-C 56 • 82 cm: C 42-C 68 • 90 cm: C 46-C 62

- Durable triple stitched seams on leg and crotch extend product life.
- Low waist with form-cut waistband ensures comfort and freedom of movement.
- Adjustable CORDURA® fabric holster pockets with an extra pocket for tools.
- Integrated phone pocket in the right pocket.
- Top loading durable CORDURA® reinforced adjustable kneepad pockets, with flap so they don't collect dirt.

Trousers with different weights

Are the trousers identical? Almost. Do you and your surroundings demand trousers with extra high durability or do you need trousers with a lower weight? MASCOT has trousers in different weights, so you and your colleagues can choose for yourselves.



MASCO® Dresden | Softshell Jacket with fleece on inner side, water-repellent

Product number: **12002-149, Two-tone**

Product number: **12102-149, One-tone**

100% polyester - 305 g/m²

Size: XS-4XL

- Breathable, windproof and water-repellent.
- Fastening with zip and internal storm flap, so the wind is kept out.
- Zipped pockets.
- Form cut sleeves with great freedom of movement.
- Extra visibility with the help of reflectors.



CORDURA®
F A B R I C

MASCO® Erlangen | Trousers with CORDURA® kneepad pockets, high durability

Product number: **12179-203, Two-tone**

Product number: **12479-203, One-tone**

70% polyester/30% lyocell (TENCEL®) - 340 g/m²

Tested in accordance with EN ISO 15797. When using MASCO® Waterloo kneepads, the requirements according to EN 14404 are met.

Leg length and size: 76 cm: C 46-C 56 • 82 cm: C 42-C 68 • 90 cm: C 46-C 62

- Contains TENCEL® which makes the fabric cooler, softer and highly moisture absorbing.
- Durable triple stitched seams on leg and crotch extend product life.
- Ergonomic fit to suit the shape of your legs with reinforced gusset on the inside of the legs and crotch.
- Top loading durable CORDURA® reinforced adjustable kneepad pockets, with flap so they don't collect dirt.
- Extra visibility with the help of reflectors.





0209



0309



0618



11010



1809



5509



88809



LIGHTWEIGHT



TRIPLE SEAMS



MASCOT® UNIQUE | Shorts, two-toned, extra lightweight

Product number: **18349-230**

50% cotton/50% polyester - 205 g/m²

Leg length and size: 26 cm: C 42-C 68

- Light material suited to warm surroundings.
- Durable triple stitched seams on leg and crotch extend product life.
- Low waist with form-cut waistband ensures comfort and freedom of movement.
- Special design of the front pocket that allows easy access to the pocket content.
- Slanted, spacious thigh pockets with easily accessible phone pocket.
- Reinforced back pockets and ruler pocket.



1809



11010



MASCO® Magdeburg | Polo Sweatshirt, modern fit

Product number: **50610-962**

60% cotton/40% polyester - 310 g/m²

Tested in accordance with EN ISO 15797.

Size: XS-4XL

- Modern, close fit with great freedom of movement.
- Good space for placement of company logo.
- Knitted collar and buttoned placket.
- Extra padding over the seam at the neck so the seam does not cause irritation.
- Ribbed waist and cuffs.



1809



0309



0618



11010



010



09



LIGHTWEIGHT



TRIPLE SEAMS



ERGONOMIC FIT



KNEE PAD POCKET



REFLECTORS



MASCO® Altona | ¾ Length Trousers with CORDURA® kneepad pockets, lightweight

Product number: **14149-442, Two-tone**

Product number: **14249-442, One-tone**

65% polyester/35% cotton - 270 g/m²

Tested in accordance with EN ISO 15797. When using MASCO® Waterloo kneepads, the requirements according to EN 14404 are met.

Leg length and size: 53 cm: C 44-C 66

- Durable triple stitched seams on leg and crotch extend product life.
- Ergonomic fit to suit the shape of your legs with reinforced gusset on the inside of the legs and crotch.
- Slanted, spacious thigh pockets with easily accessible phone pocket.
- Top loading durable CORDURA® reinforced adjustable kneepad pockets, with flap so they don't collect dirt.
- Adjustable kneepad pockets so kneepads can be optimally placed on the knee.





MASCOT® Bielefeld | T-shirt, long-sleeved, modern fit

Product number: **50568-959**

60% cotton/40% polyester - 195 g/m²

Tested in accordance with EN ISO 15797.

Size: XS-4XL

- Modern, close fit with great freedom of movement.
- Combed cotton absorbs moisture and is extra comfortable against the skin.
- Good space for placement of company logo.
- Extra padding over the seam at the neck so the seam does not cause irritation.
- Ribbed collar and sleeves.



MASCOT® Lindau | ¾ Length Trousers with CORDURA® kneepad pockets and holster pockets, high durability

Product number: **14349-442, Two-tone**

Product number: **14449-442, One-tone**

65% polyester/35% cotton - 270 g/m²

Tested in accordance with EN ISO 15797. When using MASCOT® Waterloo kneepads, the requirements according to EN 14404 are met.

Leg length and size: 53 cm: C 44-C 66

- Durable triple stitched seams on leg and crotch extend product life.
- Ergonomic fit to suit the shape of your legs with reinforced gusset on the inside of the legs and crotch.
- Holster pockets of durable CORDURA® with extra pockets for tools.
- Top loading durable CORDURA® reinforced adjustable kneepad pockets, with flap so they don't collect dirt.
- Extra visibility with the help of reflectors.



ProWash®
EN ISO 15797

MASCOT® Bottrop | Polo Shirt, modern fit

Product number: **50569-961**

60% cotton/40% polyester - 210 g/m²

Tested in accordance with EN ISO 15797.

Size: XS-4XL

- Good space for placement of company logo.
- Modern, close fit with great freedom of movement.
- Ribbed collar.
- Buttoned placket.
- Extra padding over the seam at the neck so the seam does not cause irritation.



CORDURA®
FABRIC

MASCOT® Ingolstadt | Trousers with thigh pockets, extra lightweight

Product number: **16279-230, Two-tone**

Product number: **16179-230, One-tone**

50% cotton/50% polyester - 205 g/m²

Leg length and size: 82 cm: C 42-C 68 • 90 cm: C 46-C 62

- Particularly suited to warm environments as this is light weight and has a high content of cotton.
- Durable triple stitched seams on leg and crotch extend product life.
- Low waist with form-cut waistband ensures comfort and freedom of movement.
- Ergonomic fit to suit the shape of your legs with reinforced gusset on the inside of the legs and crotch.
- Extra visibility with the help of reflectors.





MASCOT® Potsdam | T-shirt, modern fit

Product number: **50567-959**

60% cotton/40% polyester - 195 g/m²

Tested in accordance with EN ISO 15797.

Size: XS-4XL

- Combed cotton absorbs moisture and is extra comfortable against the skin.
- Modern, close fit with great freedom of movement.
- Ribbed neck.
- Neck yoke.
- Good space for placement of company logo.



88809



MASCOT® Stuttgart | Shorts, lightweight

Product number: **12049-442**

65% polyester/35% cotton - 270 g/m²

Tested in accordance with EN ISO 15797.

Leg length and size: 26 cm: C 42-C 68

- Durable triple stitched seams on leg and crotch extend product life.
- Low waist with form-cut waistband ensures comfort and freedom of movement.
- Integrated phone pocket in the right pocket.
- Reinforced back pockets and ruler pocket.
- Special design of the front pocket that allows easy access to the pocket content.



Protection against rain and cold

When cold and rain are really a challenge, you must be able to trust that your workwear will protect you. You can do so by choosing winter workwear with EN 342, protection against cold and EN 343, protection against rain.



EN 343

EN 343 certified workwear is tested to withstand great hydrostatic pressure and for its ability to conduct sweat away from the body. In the description of the certification, two references are indicated. The first number indicates the water tightness and the second number refers to the breathability of the overall product. Both scale values run from 1-3, where 3 indicates the highest class.



EN 342

Each product with EN 342:2017 certification is individually certified in accordance with different classes. These classes describe the thermal insulation value, air permeability and, if applicable, the waterproofness of the product. The letter Y on the side of an EN 342:2017 pictogram indicates the thermal insulation value. On MASCOT products, this information won't be presented beside the symbol. Instead, it is generally stated above the product information section.



1809



11010



09



010



MASCOT® UNIQUE | Outer shell jacket, four-way stretch, waterproof, lightweight

Product number: **18601-411**

87% polyamide/13% elastane - 200 g/m²

Certified to EN 343 - class 3/3.

Size: XS-4XL

- Four way stretch material provides unique freedom of movement and comfort.
- The waterproof multifunctional stretch material combines a low weight with a very high durability.
- Breathable, wind and waterproof with taped seams.
- Detachable lined hood with adjustable elastic drawstring.
- Extra visibility with the help of reflectors.



1809



0209



0309



0618



5509



11010



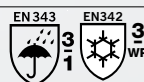
88809



09



010



MASCOT® Frankfurt | Winter Jacket with quilted fleece lining, waterproof

Product number: **12035-211, Two-tone**

Product number: **12135-211, One-tone**

100% polyester - 255 g/m²

Certified to EN 342:2017 - class 3/WP (1,95 clo) and EN 343 - class 3/1.

Size: XS-4XL

- Breathable, wind and waterproof with taped seams.
- Detachable lined hood with adjustable elastic drawstring.
- Collar design with lightweight fabric allowing the collar to move flexibly with head movements.
- Form cut sleeves with great freedom of movement.
- Extra visibility with the help of reflectors.



Lightweight and flexible winter jacket



1809



0209



0309



0618



11010



88809



BREATHABLE



WINDPROOF



WATER REPELLENT



ERGONOMIC FIT



REFLECTORS



CLIMASCOT®
Lightweight insulation

MASCOT® Darmstadt | Winter Jacket, water-repellent, highly insulating

Product number: **16002-149**

100% polyester - 305 g/m²

Size: XS-4XL

- Breathable, windproof and water-repellent.
- Unique CLIMASCOT® insulation provides warmth without bulk. Lightweight, soft CLIMASCOT® insulation takes up almost no space when compressed.
- Detachable lined hood with adjustable elastic drawstring.
- Form cut sleeves with great freedom of movement.
- Extra visibility with the help of reflectors.



Breathable, windproof and water-repellent

The outer material is a water-repellent and windproof softshell with an extended back that offers extra protection. The material is slightly flexible, and the jacket has an ergonomic design that ensures great freedom of movement. In addition the jacket is breathable so you can get rid of moisture.

Innovative lining

The winter jackets' lining is of the brand CLIMASCOT® Lightweight Insulation. Besides having a high insulating power, CLIMASCOT® gives you a breathable lightweight material that takes up very little room when compressed. The environment has also been considered with CLIMASCOT®, as it is partially made from recycled materials.

Pockets with zip

With this jacket, you can be sure that the content in your pockets are safely stored. Both front pockets and chest pockets are with zip. Inside the front of the jacket, you will find another pocket with zip. A D-ring for keys or ID card is found in the left chest pocket.



Individual adjustment of the hood

Avoid wind and rain on your head and neck with the lined, windproof and water-repellent hood. The hood is adjustable with hidden elastic drawstrings, and if you don't need the hood, it has press studs for easy removal.

Add a logo

With your company name on the back you can promote your business. This jacket is suitable for both logo print and embroidery. A zip at lower back makes it easy to apply a company logo on the back without destroying the characteristics of the insulated lining.



CLIMASCOT®

Lightweight Insulation



MASCOT® UNIQUE



0209



0309



0618



11010



1809



5509



010



09



BREATHABLE



WINDPROOF



WATER REPELLENT



ERGONOMIC FIT



REFLECTORS



CLIMASCOT®
Lightweight insulation

MASCOT® Erding | Jacket with lining, water-repellent, highly insulating

Product number: **15615-249, Two-tone**

Product number: **15715-249, One-tone**

100% polyester - 300 g/m²

Size: XS-4XL

- Unique CLIMASCOT® insulation provides warmth without bulk. Lightweight, soft CLIMASCOT® insulation takes up almost no space when compressed.
- Ergonomically shaped sleeves are designed to follow the arms' natural movements.
- Breathable, windproof and water-repellent.
- Stretch fabric at the sides provides extra freedom of movement.
- Extra visibility with the help of reflectors.



1809

0209

0309

0618



0918

5509

11010

88809



MASCOT® Witten | Sweatshirt, modern fit

Product number: **50570-962**

60% cotton/40% polyester - 310 g/m²

Tested in accordance with EN ISO 15797.

Size: XS-4XL

- Modern, close fit with great freedom of movement.
- Brushed inside making it warm and soft to wear.
- Rib at neck, waist and arms.
- Extra padding over the seam at the neck so the seam does not cause irritation.
- Good space for placement of company logo.



0209

0309

0618

11010



1809

010

09



MASCOT® Marburg | Fleece Jacket with mesh lining, water-repellent

Product number: **15603-259, Two-tone**

Product number: **15703-259, One-tone**

100% polyester - 345 g/m²

Size: XS-4XL

- Left chest area and upper back are suitable for logo printing.
- Ergonomically shaped sleeves are designed to follow the arms' natural movements.
- Breathable, windproof and water-repellent.
- Mesh lining.
- Extra visibility with the help of reflectors.





Trousers with kneepad pockets, 12179-203
Holster pockets, 15711-126
Belt, 50456-990
Knee-pads, 50451-916
Socks, 50409-876
Safety Shoe, F0111-937

See all products at www.mascotworkwear.com



11010



1809



010



09



MODERN FIT



REFLECTORS



MASCOT® UNIQUE | Fleece Jumper with zipper, modern fit

Product number: **18603-316**

94% polyester/6% elastane - 260 g/m²

Size: XS-4XL

- The smooth surface of the fleece material prevents dust and dirt from sticking.
- Modern, close fit with great freedom of movement.
- Fastening with zip and internal storm flap, so the wind is kept out.
- Flexible and close-fitting high collar.
- Elastic at cuffs and waist.
- Extra visibility with the help of reflectors.



11010

1809

010

09



CLIMASCOT®
Lightweight insulation



11010

1809

010

09



CLIMASCOT®
Lightweight insulation

MASCOT® UNIQUE | Thermal Jacket with CLIMASCOT®, water-repellent

Product number: **18615-318**

100% polyester - 240 g/m²

Size: XS-4XL

- Unique CLIMASCOT® insulation provides warmth without bulk. Lightweight, soft CLIMASCOT® insulation takes up almost no space when compressed.
- Water-repellent.
- Ergonomically shaped sleeves are designed to follow the arms' natural movements.
- Stretch fabric at the sides provides extra freedom of movement.
- Extra visibility with the help of reflectors.

MASCOT® UNIQUE | Thermal Gilet with CLIMASCOT®, water-repellent

Product number: **18665-318**

100% polyester - 240 g/m²

Size: XS-4XL

- Unique CLIMASCOT® insulation provides warmth without bulk. Lightweight, soft CLIMASCOT® insulation takes up almost no space when compressed.
- Water-repellent.
- Stretch fabric at the sides provides extra freedom of movement.
- Elastic in the arm hole keeps warmth from escaping.
- Extra visibility with the help of reflectors.



ProWash®

EN ISO 15797

Ready for industrial washing

A large portion of the workwear in MASCOT® UNIQUE is designed to withstand industrial washing.

Look for the ProWash®/EN ISO 15797 symbol next to the products. EN ISO 15797 is your guarantee that the clothing can withstand industrial washing and drying. EN ISO 15797 describes the test method that simulates the effect that industrial laundry processes have on the workwear. The test method also sets requirements for the workwear's colour fastness and wear resistance.

Clothing that fulfils the requirements of EN ISO 15797 is labelled with a PRO-label that works as a care label for the industrial laundry. MASCOT's products with a PRO-label are tested according to test method 8B, which includes coloured workwear that can tolerate tunnel finishing.

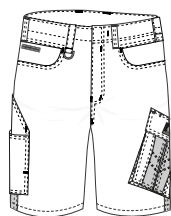
You can safely leave the washing and care of MASCOT-products with the EN ISO 15797 labelling, to the industrial laundries. All parameters, such as temperature, choice of washing powder and dosage, the fabric type and the characteristics of the stains, are taken into account to guarantee you the best result. At the same time, strict European and international requirements are met to minimise environmental impact.



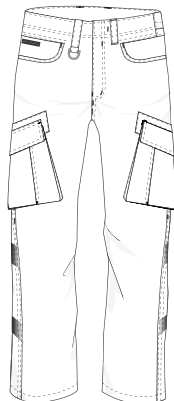
Get an overview of your options

Professional trousers for all trades and industries

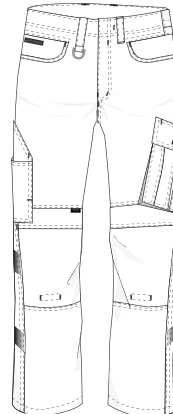
Super light trousers
- fabric quality 230



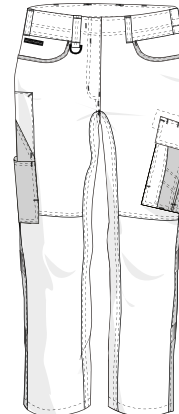
18349
Shorts
page 45



16279 + 16179
Trousers with thigh pockets
page 48



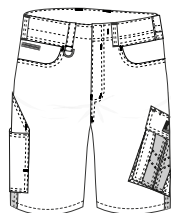
13079 + 16079
Trousers with kneepad pockets
page 31



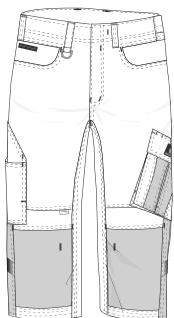
18678 + 18688 + 18778 + 18788
Trousers
page 39



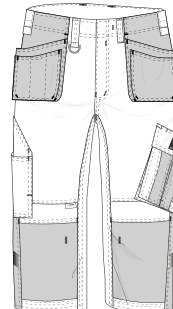
Lightweight trousers in many varieties
- fabric quality 442



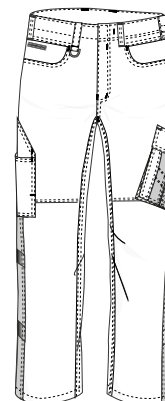
12049
Shorts
page 49



14149 + 14249
¾ Length Trousers with kneepad pockets
page 46

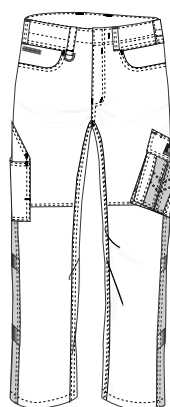


14349 + 14449
¾ Length Trousers with kneepad pockets and holster pockets
page 47

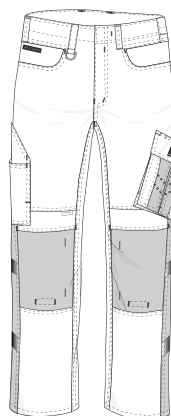


12579
Trousers
page 34

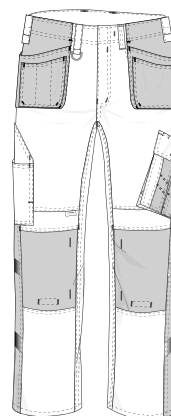
Hard-wearing trousers with TENCEL®
- fabric quality 203



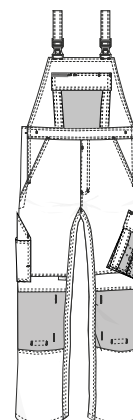
12079
Trousers
page 36



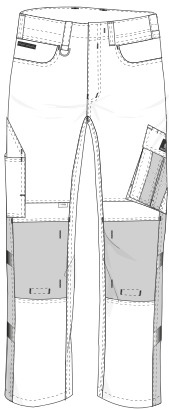
12179 + 12479
Trousers with kneepad pockets
page 44



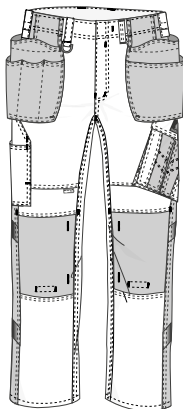
14031 + 14131
Trousers with kneepad pockets and holster pockets
page 42



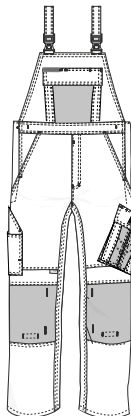
12069
Bib & Brace with kneepad pockets
page 37



12679 + 12779
Trousers with kneepad pockets
and holster pockets
page 32



17631 + 17731
Trousers with kneepad pockets
and holster pockets
page 43



12169
Bib & Brace with kneepad pockets
page 35

Get an overview of your options

Tops for all types of activities and professions

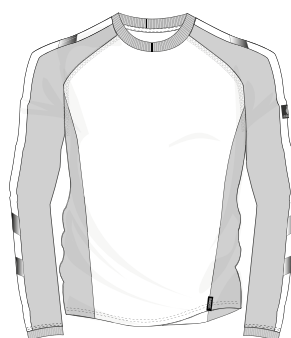
Inner layer



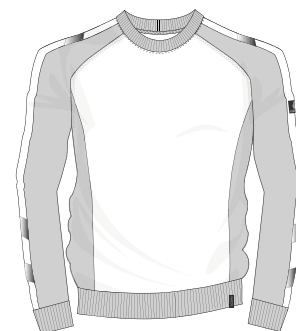
50569
Polo Shirt
page 48



50567
T-shirt
page 49

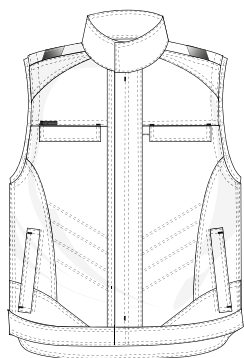


50568
T-shirt, long-sleeved
page 47

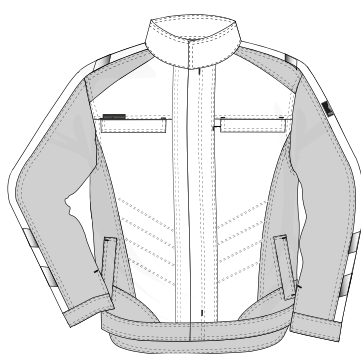


50570
Sweatshirt
page 56

Outer layer



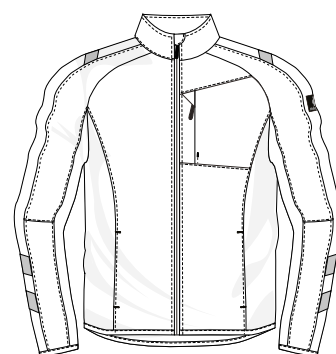
12254 + 12154
Gilet
page 34



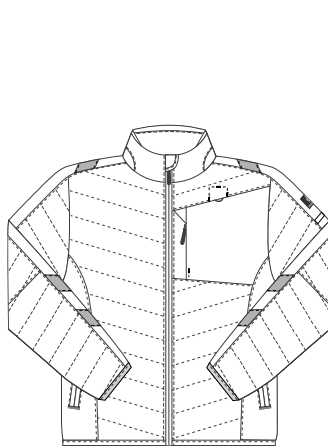
12209
Jacket
page 35



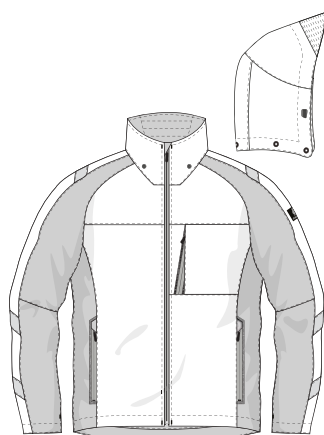
12009 + 12109
Jacket
page 37



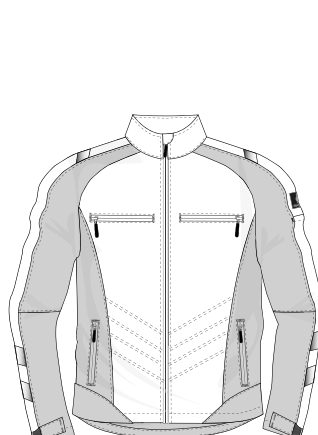
15603 + 15703
Fleece Jacket
page 56



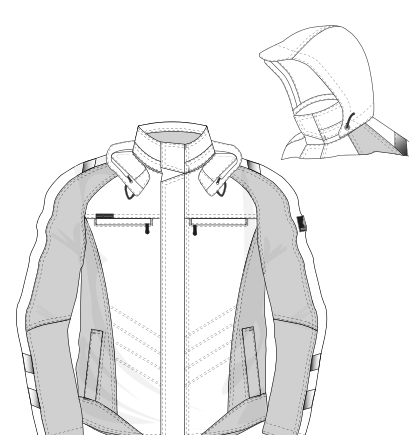
15615 + 15715
Thermal Jacket
page 55



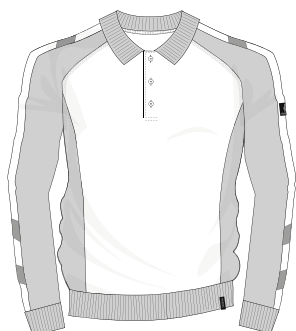
18601
Outer Shell Jacket
page 51



12002 + 12102
Softshell Jacket
page 44



12035 + 12135
Winter Jacket
page 51



50610
Polo Sweatshirt
page 46



50572
Hoodie
page 43



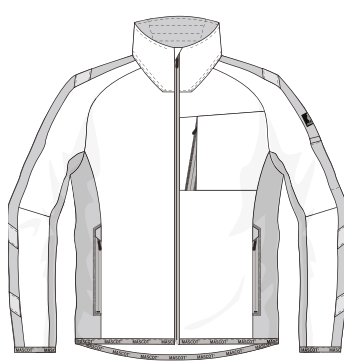
50566
Hoodie with zipper
page 42



50565
Sweatshirt with zipper
page 32



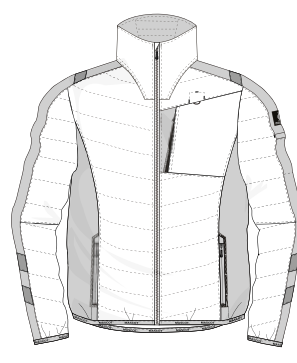
16003 + 16103
Fleece Jacket
page 36



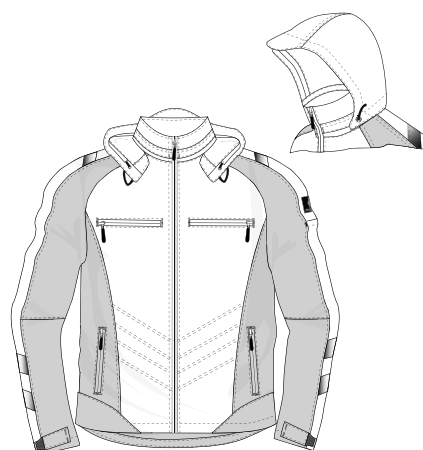
18603
Fleece Jacket
page 58



18665
Thermal Gilet
page 59



18615
Thermal Jacket
page 59



16002
Winter Jacket
page 52

Find the correct size

The right size is crucial for the workwear's functionality, and for your comfort and safety. In MASCOT's assortment, many products have a fit that can be used by both men and women. In addition, you will find MASCOT products that are especially designed for women, as well as an assortment for children.

To find the right size, and get the most accurate measurement, we recommend that someone else measures you. Take the measurements close to the body. Also remember to measure your leg length. In most of MASCOT's trousers, you can choose between three leg lengths.

If you're a woman, you have several options

Many of MASCOT's ranges are available in one or more ladies fits. If you choose a product for women, please ensure you measure according to the ladies fit and the sizes form for women. Some of the men's products also fit women. If you pick a men's product, the measurements must be taken from the men's fit and sizes form for men.

Measurements for men's fit



Measurements for ladies fit



H. Head measure

Measure the circumference of the head.

P. Collar size

Measured around the neck – 1 cm above the collar bone.

A. Chest

Measured around the widest part of the chest.

K1. Waist size

Measure the waist size just above the navel. You need to tighten the measuring tape.

K2. Waist size

Measure the waist size just below the navel. You need to tighten the measuring tape.

K3. Waist size

Measure the narrowest point of your waist. Your waist size is used together with your hip size to find your fit – DIAMOND or PEARL.

L1. Hip size

Measured around the widest point of the hips.

L2. Hip size

Measured with legs together around the widest point of the hip. In MASCOT's products for women, it is the hip measurement that determines which size to choose.

E. Inner seam

The length is measured on the inside of the leg from crotch to floor (barefoot).

T. Height

Your full height.

Try the clothes on!

In that way, you are sure that the clothing fits as it should.

How to find your size in the measuring chart

For example: You are looking for trousers with a low waist.

Your waist measurement (K2) is 92 cm.

Find your measurement under K1/K2 in the chart. If your size fall between two sizes, you should choose the larger size.

In this example you should choose 93 cm and therefore the size C52. Remember also to measure your leg length before you order.

MEN

T-shirts, sweatshirts, jackets and additional tops as well as boilersuits

	C42	C43	C44	C45	C46	C47	C48	C49	C50	C51	C52	C54	C56	C58	C60	C62	C64	C66	C68	C70	C72	C74
	XXS		XS		S				M		L		XL	2XL		3XL		4XL		5XL		6XL
A - Chest (cm)	84	86	88	90	92	94	96	98	100	102	104	108	112	116	120	124	128	132	136	140	144	148
A - Chest (inch)	33		34.5		36		38		39.5		41	42.5	44	45.5	47	49	50.5	52	53.5	55	56.5	58

Shirts

	C42	C43	C44	C45	C46	C47	C48	C49	C50	C51	C52	C54	C56	C58	C60	C62	C64	C66	C68	C70	C72
	XXS		XS		S				M		L		XL	2XL		3XL		4XL		5XL	
P - Collar size (cm)					37-38				39-40		41-42		43-44	45-46		47-48	49-50		51-52		
P - Collar size (inch)					14				15.5		16.5		17.5	18		19	19.5		20		

Trousers/bib & braces

	C42	C43	C44	C45	C46	C47	C48	C49	C50	C51	C52	C54	C56	C58	C60	C62	C64	C66	C68	C70	C72
	XXS		XS		S				M		L		XL	2XL		3XL		4XL		5XL	
K1/K2 Waist size (cm)*	68	70.5	73	75.5	78	80.5	83	85.5	88	90.5	93	98	103	108	113	118	123	128	133	138	143
K1/K2 Waist size (inch)*	27	28	28.5	29.5	30.5	31.5	32.5	33.5	34.5	35.5	36.5	38.5	40.5	42.5	44.5	46.5	48.5	50.5	52.5	54.5	56.5
L1 - Hip (cm)	90	92	94	96	98	100	102	104	106	108	110	114	118	122	126	130	134	138	142	146	150
L1 - Hip (inch)	35.5	36	37	38	38.5	39.5	40	41	41.5	42.5	43	45	46.5	48	49.5	51	52.5	54	56	57.5	59

*Bib & braces are not available in odd-sizes.

E - Leg length (cm)	76	82	90
E - Leg length (inch)	30	32	35

Jeans

K1/K2 - Waist size (inch)	29	30	31	32	33	34	36	38	40
K1/K2 - Waist size (cm)	73	76	78.5	81	83.5	86	91	96	101

E - Leg length (inch)	30	32	34	36
E - Leg length (cm)	76	82	87	92

Headgear

	S		M		L		XL		2XL	
H - Head measure (cm)	54	55	56	57	58	59	60	61	62	63
H - Head measure (inch)	21	21.5	22	22.5	23	23.25	23.5	24	24.5	25

WOMEN

MASCOT offers a wide range of products developed especially for women.

Tops										
	XS	S	M	L	XL	2XL	3XL	4XL	5XL	6XL
A - Chest (cm)	76	82	88	96	104	112	120	128	136	144
A - Chest (inch)	30	32	34.5	37.5	41	44	47	50.5	53.5	57
L2 - Hip (cm)	86	92	100	108	116	124	132	140	148	156
L2 - Hip (inch)	34	36	39.5	42.5	45.5	49	52	55	58	61.5

Across MASCOT's assortment you will find women's trousers, shorts and skirts in two different fits. It is your body's measurements that determine which fit you should choose. The two fits are called: DIAMOND and PEARL.

Two steps to find the trousers/skirts/shorts that are just perfect for you:

1) Find your fit

Your MASCOT fit will depend on a combination of your waist size (the narrowest part) and your hip measurement (the widest part).

The general rule of thumb is that if there is a difference of more than 20 centimetres between your hip and your waist measurements then you should opt for a DIAMOND fit. If the difference is less than 20 centimetres, on the other hand, then you should choose PEARL.

2) Find your size

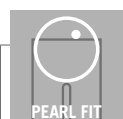
You can find your size by measuring the circumference of your hip at its widest point. Keep your legs together when measuring hip width. Check the table below your fit: Determine your size based on the circumference of your hip.



Ladies trousers and skirts

DIAMOND fit: A difference between waist and hip measurements of more than 20 cm.

	C34	C36	C38	C40	C42	C44	C46	C48	C50	C52	C54	C56
	S	M		L		XL	2XL		3XL	4XL	5XL	6XL
K3 - Waist size (cm)	74	78	82	86	90	94	98	104	110	116	122	128
K3 - Waist size (inch)	29	30.5	32	34	35.5	37	38.5	41	43.5	45.5	48	50.5
L2 - Hip (cm)	100	104	108	112	116	120	124	130	136	142	148	154
L2 - Hip (inch)	39.5	41	42.5	44	45.5	47	49	51	53.5	56	58	60.5



Ladies trousers and skirts

PEARL fit: There is a small difference between waist and hip measurements.

	C34	C36	C38	C40	C42	C44	C46	C48	C50	C52	C54	C56
	S	M		L		XL	2XL		3XL	4XL	5XL	6XL
K3 - Waist size (cm)	78	82	86	90	94	98	104	110	116	122	128	136
K3 - Waist size (inch)	30.5	32	34	35.5	37	38.5	41	43.5	45.5	48	50.5	53.5
L2 - Hip (cm)	95	98	101	104	107	110	115	120	125	130	135	140
L2 - Hip (inch)	37.5	38.5	39.5	41	42	43.5	45	47	49	51	53	55

E - Leg length (cm)	76	82
E - Leg length (inch)	30	32

Remember also to measure the leg length. All MASCOT's ladies trousers are available in two leg lengths: 76 cm and 82 cm.



Workwear symbols

Next to each product in this catalogue you will find a number of symbols. They offer you a quick overview of the product's properties. On this page, you can read more about, what the headline in the symbol covers.



Breathable

Breathability in waterproof/water-repellent clothing is especially important if you sweat while working in cold environments. If you do not get rid of the moisture, there is a great risk that your wet clothes will get cold and you will freeze as a result.



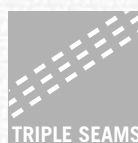
Ergonomic fit

All of MASCOT's clothes are, of course, designed for movement. But if you have a particular need for clothing that supports, assists and just plain fits, in all body positions, then go for the ergonomic fit.



Windproof

When your clothing is windproof you hold heat more easily. Choose products with this symbol when you don't want the wind to disrupt your everyday comfort.



Triple Seams

Triple stitched seams are your guarantee for high wear resistance. MASCOT places them on your clothes most exposed areas, such as the shoulders and the outside and inside of the leg, prolonging the wearability of your clothing.



Waterproof

100%. This symbol is your assurance that MASCOT does not allow as much as a single drop of water penetration. Zippers are waterproof and seams are taped on the back.



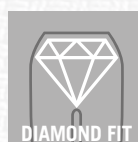
Modern fit

Most of MASCOT models have a normal, comfortable workwear fit. Recently, we have experienced a higher demand for a slimmer fit. Look for this symbol, if you require clothing to sit a little closer to the body.



Water-repellent

Clothes carrying this symbol are made of waterproof material. However, it is not possible to put tape on the back of the seams of certain fabrics. Therefore the product cannot be classified as being entirely 100% waterproof, just water-repellent.



Diamond fit

Diamond is a ladies' fit. This fit is, as a general rule, designed for women with a difference of more than 20 centimetres between their waist and hip measurements. If there is a difference of less than 20 centimetres, then the Pearl fit is preferred. We always recommend that you measure the circumference of hip and waist and use the measuring chart to find the optimal size.



Lightweight

The symbol indicates that the workwear is light in weight. The garment remains highly durable. You should choose products carrying this symbol if you want durable workwear in a light fabric, for example if you work indoors and/or in hot environments.



Pearl fit

Pearl is a ladies' fit. This fit is, as a general rule, designed for women with a difference of less than 20 centimetres between their waist and hip measurements. If there is a difference of more than 20 centimetres, then the Diamond fit is preferred. We always recommend that you measure the circumference of hip and waist and use the measuring chart to find the optimal size.

Certifications and labels

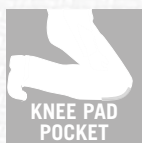
We certify MASCOT products according to international standards, norms and labelling. Some of them are standards for safety workwear that you and/or your employer, must ensure your workwear has. Others, such as Oeko-Tex®, are things MASCOT has chosen to apply for on the products, so you can quickly get an overview of, and find peace of mind in the fact that the products meet the strictest requirements.

In general, MASCOT invests in many norms for each product in order for us to document that the products comply with high international standards.



Holster pockets

An indispensable feature for anyone using nails, screws and bits. Select a version with magnets at the top so you do not have to dig down into your pocket every time you need to grab something. Holster Pockets can also be purchased separately.



Kneepads

If you already use kneepads, then you know how important comfort is in your workday. MASCOT's kneepad pocket design ensures that the kneepads sit perfectly every time you kneel.



Reflective

Small reflective strips on your clothing can be crucial to your safety. Regardless of where you work, traffic can be a factor. In this environment, reflectivity increases your chance of being seen.



Ultimate Stretch

Products with this symbol are made with four-way stretch. The stretch material is flexible in all directions giving you an extraordinary freedom of movement. Products with four-way stretch are soft and comfortable to wear and follow your every move providing extra comfort for your work day.



EN 343

When there's a job that needs to be done whatever the weather, it's important to be properly dressed. EN 343 is an European standard for protective clothing. Look for EN 343 certification if you want to be guaranteed comfort even when it's windy and raining. You will find two values beside the symbol for EN 343. The first number indicates waterproofness. The second number describes the breathability of the overall product. Both values are divided into classes from 1-3, with 3 indicating the highest class in both cases.



EN 342

The best way to protect yourself from the cold is to use workwear that is certified in accordance with EN 342:2017. In order to obtain maximum protection, your workwear should be kept dry and tight around openings, such as the wrists, for example. You will also need to wear gloves and a hat, etc, in order to avoid local cooling. Each individual product is classified in accordance with different values: thermal insulation value (Y), degree of air permeability (AP) and, if applicable, waterproofness (WP).



ProWash® / EN ISO 15797

An industrial washing and finishing method for testing of workwear. The standard specifies test methods and equipment which can be used to determine whether materials are suitable for workwear for industrial washing.



Oeko-Tex standard 100

Confidence in textiles. Tested for harmful substances.

Sustainable production

The vast majority of MASCOT's products is produced in the company's own factories, where production is conducted efficiently and with great respect for the environment and people.



MASCOT takes its responsibility for the environment and people seriously

MASCOT strives to create sustainable solutions throughout the entire production chain. As a global textiles company, we have an enormous responsibility to safeguard the people and the environment at our production sites and throughout the rest of our supply chain. This is a responsibility that we take very seriously.



The 17 sustainability goals describe a number of global challenges. These commit all UN member countries to strive towards achieving the goals. The global goals are interdependent and balance the three dimensions of sustainable development: economical, social and environmental development.

The 17 global goals

The UN has formulated 17 global goals for sustainable development, which it expects all countries, companies and organisations to meet by 2030. The 17 global goals are common points of orientation, so that all players can realise the global need for business solutions that can help create a sustainable future for the generations to come.

MASCOT and the global goals

MASCOT works with all of the 17 global goals at different levels, and we will continue to develop and intensify our work in this area towards 2030. As part of our workwear production, we want to help eliminate poverty and hunger, ensure health and education for all, and provide decent jobs, among other things. Read more about how we do this on the following pages.



Decent jobs bring people out of poverty





Eliminate poverty

MASCOT produces clothing in countries where poverty is a challenge. By offering good, decent jobs with reasonable pay, we help increase living standards in these areas.

In Laos, 22.7% of the population lives in extreme poverty. In Vietnam, this figure is 2.6%. MASCOT is continually expanding production in Laos, so that we can employ more people and help reduce the number of people who live in extreme poverty. Employees are typically recruited to the factories from surrounding villages, where extreme poverty is rife. To reduce employees' costs and increase their personal safety, MASCOT also provides daily transport between the factory and villages.



Gender equality

The 5th global goal focuses on ensuring gender equality, and on ensuring that women's and girls' rights are strengthened globally.

More than 2,400 of MASCOT's employees work outside Europe, where gender inequality in society tends to be the greatest. Gender inequality here is noted in areas such as health, co-management and business activity.

At MASCOT's factories in Vietnam, 86% of employees are women. In MASCOT's Laos factories, 81% of employees are women. MASCOT's policy is naturally for all employees to have the same opportunities, just as it is always the best qualified people who are employed, regardless of gender. With a majority of female employees, we reduce gender inequality, as business activity helps increase equality. Access to the company's free medical clinic also means that women's access to better health is increased.



Decent jobs and economic growth

MASCOT invests heavily in innovation and market development. Both of these generate growth, which results in further productive employment as MASCOT's investments are made in both technology and management systems. This also applies to our production in Vietnam and Laos.

Salaries for MASCOT's employees in Vietnam and Laos are increasing far more, year on year, on a percentage basis, than salaries in Europe. This means that MASCOT not only helps reduce inequality across borders, we also help to generally increase the level of pay in those areas where we have factories. And with the good working environment that we offer our employees, we also increase the working conditions in the local area in general, as otherwise employers in the region would lose their employees. We create decent jobs and thereby give other players in the local area an incentive to do the same.



Healthy employees

When you set up production facilities in developing countries, you have an obligation to increase health, wellbeing and safety for employees. Or at least that is how MASCOT sees it. That is why MASCOT provides free access to medical assistance and health information, as well as a free nutritious lunch for all employees.



Free lunch

Every day, MASCOT employees sit down to lunch and get a good, nutritious meal. MASCOT's doctors and nurses work closely with the chefs, and food samples are taken every day in order to ensure high levels of quality and to ensure a sufficient calorie content. MASCOT's lunch helps increase food safety and to improve the standard of nutrition for employees.



Happy and healthy employees are good employees

MASCOT has around 2,400 employees in Southeast Asia working in a European work culture and with MASCOT's strong values. This results in safe, secure and decent workplaces with huge development potential for MASCOT's employees. The employment contract also includes access to a free medical clinic, health information, training in safety, and a good, free lunch.

Healthy and happy employees have energy for their job. This is noticeable in the production in Vietnam and Laos. Just like the European MASCOT employees, they are dedicated to the mission of creating the world's best workwear - based on durability in both production quality and in socially responsible production.



Free access to doctors and healthcare staff
All employees at MASCOT's factories can visit MASCOT's state-certified health clinics on a daily basis. The doctors and nurses don't just provide treatments. They also provide preventative healthcare and create information campaigns on various health topics. They also work on creating a positive mental working environment.





Responsible production

Durable products are sustainable products

Responsible consumption is, for example, buying products that last a long time, to avoid frequently buying new products and using new resources. This also applies to workwear.

MASCOT only offers products that have been tested for long-term use. This applies to everything from fabric and reinforced seams to extra reinforcement in areas that are particularly subjected to wear and tear. We produce clothes in our own factories and can therefore guarantee 100% quality control. All this means that MASCOT's products last a long time. And this has a major impact on the sustainable balance sheet.

To ensure quality, many of the fabric types have undergone a thorough course of testing, such as wear tests, tear strength tests and break tests. High quality is at the core of MASCOT's DNA. MASCOT's slogan and consistent work method has always been TESTED TO WORK.



Recycled resources

Many resources are used in the world's industries, but there will not always be an endless supply of new resources. That is why we need to focus on using recycled materials - waste and used materials - that can be recycled. That's what we do at MASCOT.

All of MASCOT's padded lining is made using a large amount of recycled polyester. MASCOT also has a large range of T-shirts, polo shirts and sweatshirts made from recycled plastic, which has been transformed into new polyester yarns. Other products are made from organic cotton, which means that the cotton is grown without the use of pesticides or sprayed chemicals.

Not all products are made from recycled materials, as in some areas this can affect, for example, wear resistance, quality or colour. However, a large part of the packaging comes from recycled materials. At MASCOT, cardboard boxes, paper and a new generation of plastic product bags are either wholly or partly made from recycled materials.



12 RESPONSIBLE CONSUMPTION AND PRODUCTION



Responsible consumption and production

Economic growth and sustainable development require that we show due care and diligence when using our products and resources. We must ensure that our consumption and the way we produce our clothes around the world are done responsibly and with respect for current and future people and the environment.



Minimising waste, energy consumption and rubbish in production

Sustainable production also includes limiting waste, rubbish and emissions. Producing clothing is a comprehensive and global process. There are many stages involved.

Fabric and other raw materials

We work with all suppliers towards a general reduction in the use of chemicals and water. We also choose suppliers based on their environment profile. Most of our piece goods come from suppliers that have both Bluesign® and are ISO 14001 certified. We are also striving to convert part of the dyeing process to dyeing without or with only minimal use of water.

Own production

MASCOT has a great advantage in that we produce the majority of our products ourselves. 75% of all products are made in our own factories, where we control the processes. MASCOT's factories are located in official, established industrial zones that have been approved by the state ministries in Vietnam and in Laos. All have a comprehensive environment policy and ongoing control of waste management. Wastewater treatment is undertaken by the industrial zones and monitored by environmental agencies. Inspections are made quarterly. MASCOT sorts and registers all waste and as much as possible is collected with recycling in mind. Fabric off-cuts from production are heavily minimised and are also sorted and recycled. MASCOT also has a policy around sustainable climate impact that applies to its own factories, and initiatives are regularly being launched to reduce the production's impact on the environment.



CSR-certified production

MASCOT's production is certified according to the most comprehensive certification within CSR – SA8000.

The vast majority of MASCOT's products – from our winter clothing to our workwear – is made at our very own factories. When many millions of quality products need to be produced each year in an effective production chain, there is a definite need for skilled and dedicated employees. That is why we have our own, experienced HR departments, both in Vietnam and in Laos. Since we recruit all of our employees ourselves, we can guarantee compliance with the minimum age limit for full time work and ensure that there is no child labour at our factories. All employees have good employment conditions with good salaries, and there is complete transparency with regards to remuneration

and bonuses. Any overtime hours are reported in advance and remunerated in accordance with higher percentage rates. Employees naturally have freedom of association and the right to collective bargaining.

Companies that achieve SA8000 have, for example:



No child labour



No forced labour



A good working environment adapted to local conditions



Reasonable working hours and wages



The right to organise



No discrimination



An effective management system for control of subcontractors' employee relations

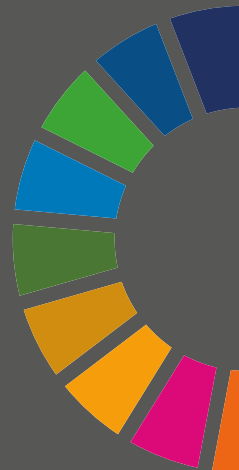


Health and Safety

Read more about SA8000 here: www.mascotworkwear.com/en/sa8000



No one can solve the global challenge alone



Partnerships for the goals

The 17th global goal is about partnerships. No one can solve the global challenge alone. It requires collaboration and forward-looking partnerships.

MASCOT already has a long line of established partnerships with stakeholders in our production countries. We collaborate with ministries and governments, just as we collaborate with organisations that work with the textile industry, so that together with other stakeholders we can promote both social and environmental conditions in the world's textile-producing countries.

MASCOT is constantly building new partnerships. For example, we are currently working on partnership with several different players in the value chain, to invest with them in new technologies that can create a more sustainable and rational production.



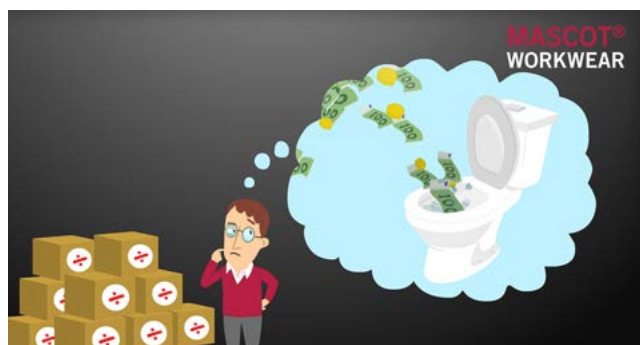
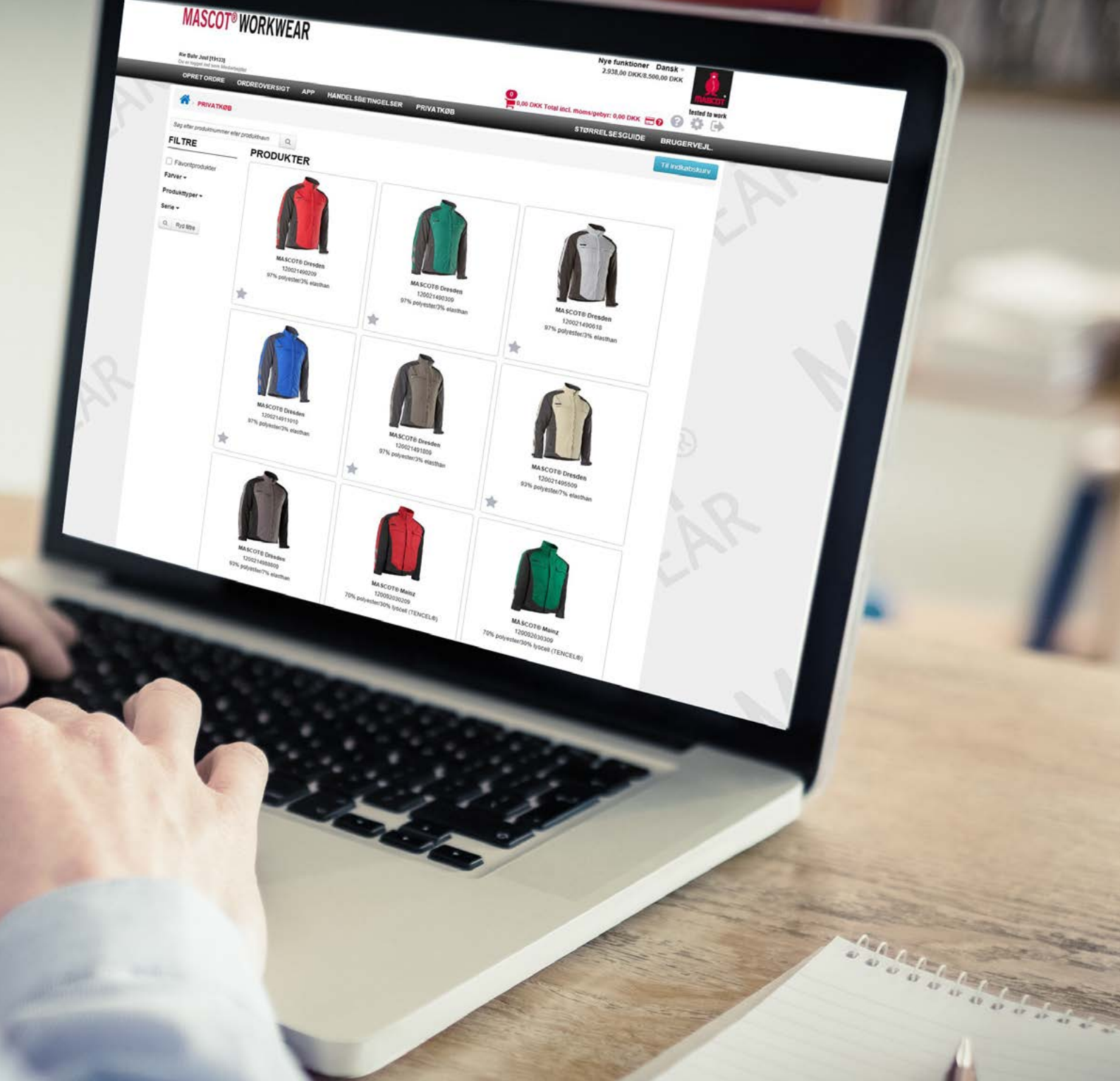
MASCOT is a member of the Fair Wear Foundation. Together with around 100 other textile producing companies, MASCOT strives via Fair Wear to increase social responsibility in all textile-producing factories around the world.



MASCOT® SmartStore

MASCOT® SmartStore is an online logistics and ordering system. The system is developed to make your order management as fast and problem-free as possible. It is adapted for each company's product range and needs within workwear and personal protective gear. Contact your local MASCOT distributor to get started right away.





Global Workwear Solution



MASCOT offers a seamless workwear solution for multinational companies, across borders. If your company employs more than 1,000 workwear users internationally, you'll get all the benefits of having only one contact point at MASCOT.

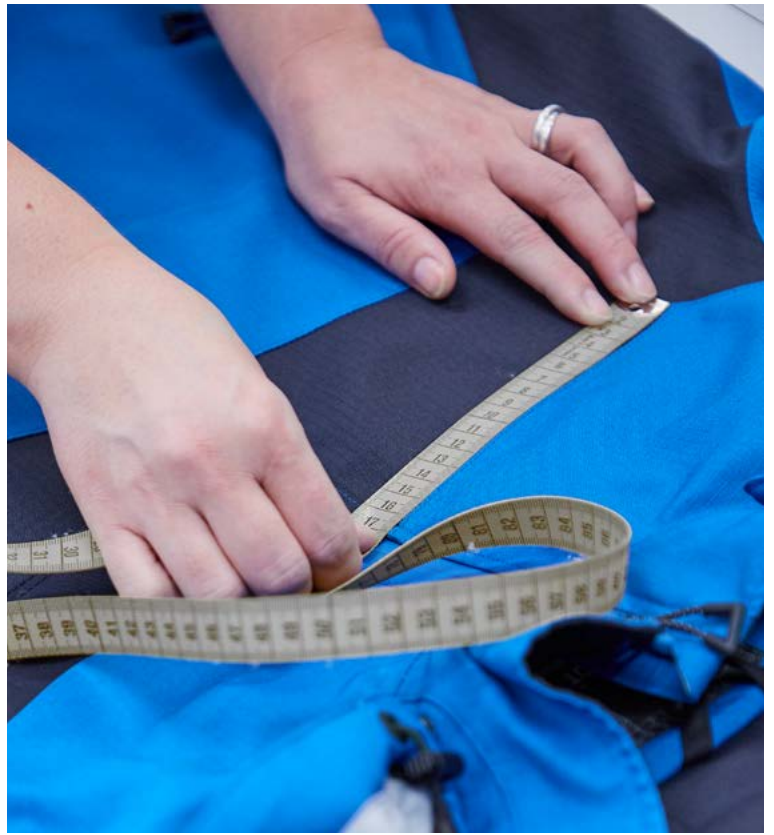
Save time and money on administration with a global agreement

Do you run your business activities across borders? At MASCOT, we can simplify your workwear purchasing process and offer one solution for your company – globally.

MASCOT manages your global workwear solution

- Fast, flawless worldwide delivery - with minimal administration
- Worldwide central project management - with one contact point
- A distribution network across Europe as well as resellers around the globe
- Uniformity in quality, products and services







Individual product customisation

— more than a standard assortment at your disposal

Do you have a large company with individual needs that aren't covered by MASCOT's standard assortment? Then you have the possibility for a customised MASCOT solution for your employees. You might need special sizes, an extra pocket for certain tools, or another fabric or colour. Or maybe you need one or more new product types or styles. Everything is possible, and our experts are at your disposal, so together, we will find the solution that suits you best.

At MASCOT, we categorise the many types of individual product customisations in terms of how extensive the changes are. For certain special order products, we have a minimum number of products you need to order, and the delivery time is of course also longer than with our standard assortment. This is agreed individually from order to order.

Do you need special orders or other individual customisations? Call your contact from MASCOT or your distributor. He/she can help you get just the workwear to match your needs.



Printing and embroidery

MASCOT can provide printing and embroidery as an integrated part of your workwear order. Whatever solution you choose, adding a printed logo or a piece of embroidery to your order is really simple. We process all printing orders quickly and effectively, making sure that your employees receive their custom-branded clothing within good time.



MASCOT – a quick, easy and quality conscious choice

It is easy to do business with MASCOT. You have an entire assortment of workwear and safety footwear at your disposal – from head to toe and for all seasons. You only need to shop in one place, and you'll get international support all over the world. In addition, you can automate many aspects of your trade with MASCOT, as you wish.

It is also quick to do business with MASCOT. We offer user-friendly, online ordering platforms that will save you time and minimise errors. We process orders from all over the world within 24-48 hours from a fully automated, ultramodern logistics centre with a continuous inventory of more than 4.8 million products. Flawless and fast – and, if you wish, we can man-pack the workwear.

If you choose MASCOT, you also make a quality conscious decision. It is not just that the workwear and safety footwear are thoroughly tested and of the

highest quality, it is also that MASCOT offers you the most efficient ordering and service solutions. Last but not least, it means that when you buy products from MASCOT, you know they are manufactured under good working conditions. The vast majority of MASCOT's products are manufactured on our own CSR-certified factories in Vietnam and Laos. We guarantee good working conditions – and socially responsible workwear.

When you do business with MASCOT, you do business with a company that continuously develops its products, services and solutions. We constantly focus on the opportunities and limitations of our customers and potential customers. These inputs are the focal point in the development of new products and solutions from MASCOT. We will be one step ahead to deliver the best solutions to our customers because that means our customers also are a step ahead.



**2800+
EMPLOYEES**



**OVER 3500
DISTRIBUTORS
WORLDWIDE**



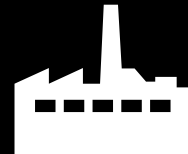
**INTERNATIONAL
AWARDS**



**FOUNDED IN
1982**



**FAMILY
OWNED**



**4 FACTORIES
IN LAOS AND
VIETNAM**

32000

**ITEM
NUMBERS**



**600+ UNIQUE
PRODUCTS**



**4,800,000
PRODUCTS
IN STOCK**



**EFFECTIVE
FLOW WITH
SAP**



**SALES STAFF IN
15 EUROPEAN
COUNTRIES**



**DELIVERY
RELIABILITY
AT 98%**

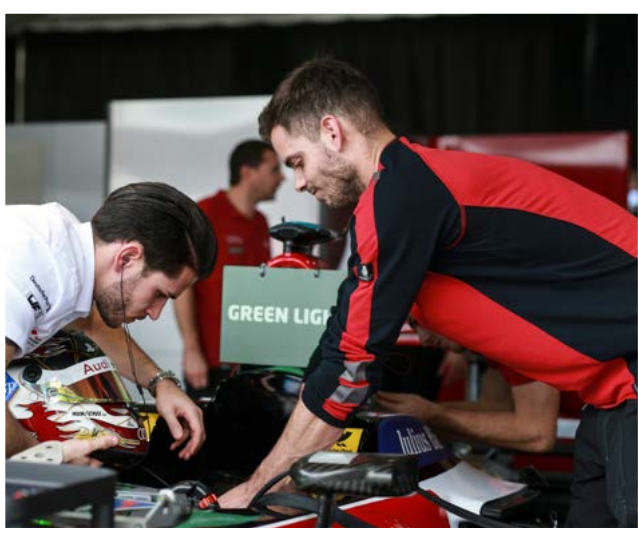
SA8000

**SOCIALLY
RESPONSIBLE
PRODUCTION**

ISO 9001

CERTIFIED

**MASCOT®
WORKWEAR**



Mascot International A/S

Silkeborgvej 14 · DK-7442 Engesvang · Denmark
Tel. +45 87 24 47 00 · Customer service +44 161 504 0960
info@mascotworkwear.com · www.mascotworkwear.com



www.facebook.com/MascotWorkwear



www.linkedin.com/company/mascot-international-as



www.youtube.com/mascotinternational



www.instagram.com/mascot_workwear/



B0600-119-04 - EN 092019

MASCOT® is a registered trademark, owned by Mascot International A/S.
No liability accepted for product alterations, printing errors and inability to supply or deliver.

MASCOT®
WORKWEAR

Audi Sport
Official Supplier