



tested to work



MASCOT® WORKWEAR

# MASCOT® ACCELERATE

#AccelerateYourPerformance







<b>1</b>	<b>MASCOT® ACCELERATE</b> – a workwear range for your company .....	4
<b>2</b>	<b>One colour, endless possibilities</b> – product overview for every colour .....	10
<b>3</b>	<b>Sustainable production</b> – MASCOT takes responsibility for people and the environment.....	36
<b>4</b>	<b>The right trousers for every situation</b> – trousers in four different fabric qualities.....	48
<b>5</b>	<b>Mix and match tops and jackets</b> – and create a corporate look.....	80
<b>6</b>	<b>Wide range of products suitable for industrial washing</b> – Overview of ProWash® products.....	116
<b>7</b>	<b>All products gathered in one place</b> – overview of product types .....	120
<b>8</b>	<b>For children who want to be just like mum and dad</b> – durable clothes for children .....	124



# 1

## MASCOT® ACCELERATE

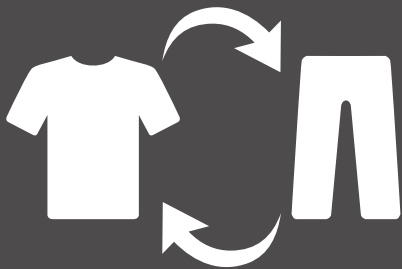
MASCOT® ACCELERATE is MASCOT'S largest product launch to date with over 70 products divided across six different colours. A complete range of clothing for everyone – men, women and children. The overarching flexibility throughout MASCOT® ACCELERATE offers a wide range of functions, colours and possibilities to a wealth of different industries.



**+70  
PRODUCTS**



**MEN / WOMEN /  
CHILDREN**

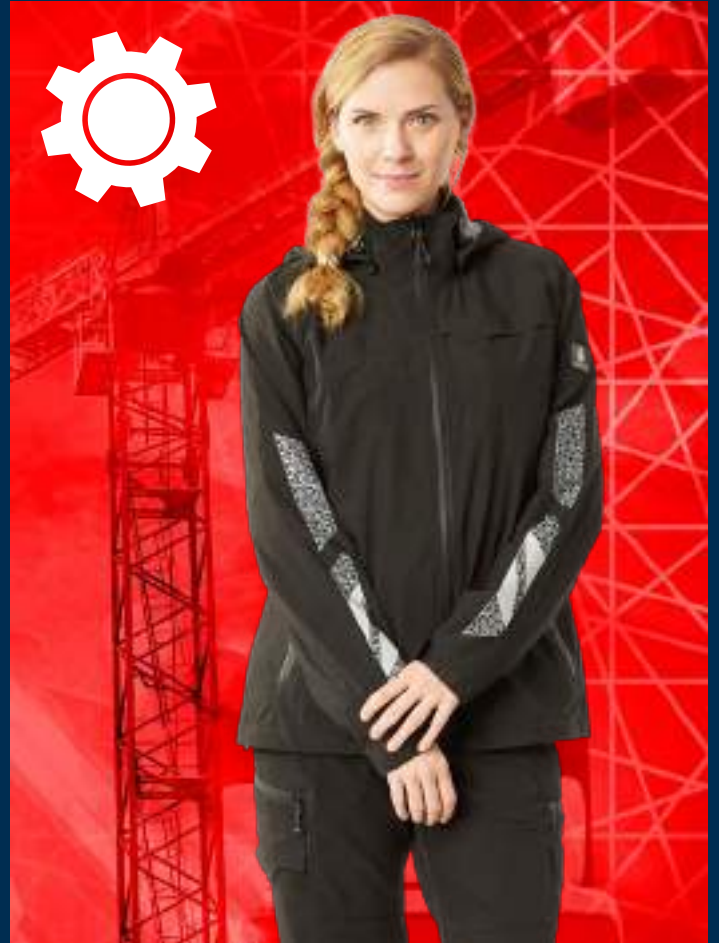


**MIX &  
MATCH**

**6**

**COLOURS**









»The range takes freedom of movement to a whole new level – in part as a result of its new four-way stretch fabric.«






# INSPIRATION

»MASCOT® ACCELERATE is dynamism. Efficiency. Activity. Freedom of movement.«

---

Helle, Head Designer



»The development of MASCOT® ACCELERATE has been very much inspired by our close partnership with Audi Sport. This means there is a sharp focus on design, agility and forward momentum.«









# 2

## COLOURS





# Mix products within a single colour

One colour, endless possibilities. The many product varieties in the range are available in up to six different colour combinations.

**12**

Colour 91 azure blue &  
colour 91010 azure blue/  
dark navy

**16**

Colour 20209  
traffic red/black

**20**

Colour 03 green &  
colour 33303 moss green/  
green

**24**

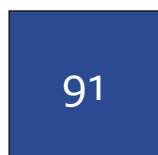
Colour 18 dark anthracite &  
colour 1809 dark anthracite/  
black

**28**

Colour 010 dark navy &  
colour 01091 dark navy/azure  
blue

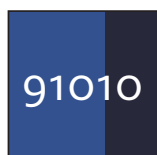
**32**

Colour 09 black



91

azure blue



91010

azure blue/  
dark navy









18082-250-91010  
T-shirt, modern fit



18092-801-91010  
T-shirt, ladies fit, moisture wicking  
COOLMAX® PRO, V-neck



18382-959-91010  
T-Shirt, modern fit



18392-959-91010  
T-Shirt, ladies fit



18083-801-91010  
Polo shirt, moisture wicking COOLMAX®  
PRO, modern fit



18081-810-91010  
Polo shirt, moisture wicking COOLMAX®  
PRO, long-sleeved, modern fit



18384-962-91010  
Sweatshirt, modern fit



18394-962-91010  
Sweatshirt, ladies fit



18484-962-91010  
Sweatshirt with zipper, modern fit



18494-962-91010  
Sweatshirt with zipper, ladies fit



18105-951-91010  
Knitted Jumper with zipper, modern fit



18155-951-91010  
Knitted Jumper with zipper, ladies fit



18365-511-91010  
Gilet, four-way stretch, lightweight



18375-511-91010  
Gilet, ladies fit, four-way stretch,  
lightweight



18065-318-91010  
Winter Gilet with CLIMASCOT®-lining,  
water-repellent, lightweight



18015-318-91010  
Jacket with CLIMASCOT®-lining, water-  
repellent, lightweight



18025-318-91010  
Jacket with CLIMASCOT®-lining, ladies  
fit, water-repellent



18001-249-91010  
Outer Shell Jacket, windproof and  
water-repellent, lightweight



18011-249-91010  
Outer Shell Jacket, ladies fit, windproof  
and water-repellent



18301-231-91010  
Outer Shell Jacket, breathable, wind and  
waterproof



18679-442-91  
Trousers with thigh pockets, stretch  
inserts



18579-442-91  
Trousers with CORDURA® kneepad  
pockets, stretch inserts



18569-442-91  
Bib & Brace with CORDURA® kneepad  
pockets, stretch inserts





18383-961-91010  
Polo shirt, modern fit



18393-961-91010  
Polo Shirt, ladies fit



18381-959-91010  
T-shirt, long-sleeved, modern fit



18391-959-91010  
T-shirt, long-sleeved, ladies fit



18091-810-91010  
T-shirt, ladies fit, moisture wicking  
COOLMAX®PRO, long-sleeved and V-neck



18584-962-91010  
Hoodie with zipper, modern fit



18003-316-91010  
Fleece Jumper with half zip, modern fit



18053-316-91010  
Fleece Jumper with half zip, ladies fit



18103-316-91010  
Fleece Jumper with zipper, modern fit



18153-316-91010  
Fleece Jumper with zipper, ladies fit



18075-318-91010  
Winter Gilet with CLIMASCOT®-lining,  
ladies fit, water-repellent



18303-137-91010  
Fleece Jumper with zipper, modern fit



18101-511-91010  
Jacket, four-way stretch, lightweight



18008-511-91010  
Jacket, ladies fit, four-way stretch,  
lightweight



18509-442-91010  
Jacket, stretch inserts



18311-231-91010  
Outer Shell Jacket, ladies fit, breathable,  
wind and waterproof



18035-249-91010  
Winter Jacket with CLIMASCOT®-lining,  
windproof and water-repellent



18045-249-91010  
Winter Jacket with CLIMASCOT®-lining,  
ladies fit, windproof and water-repellent



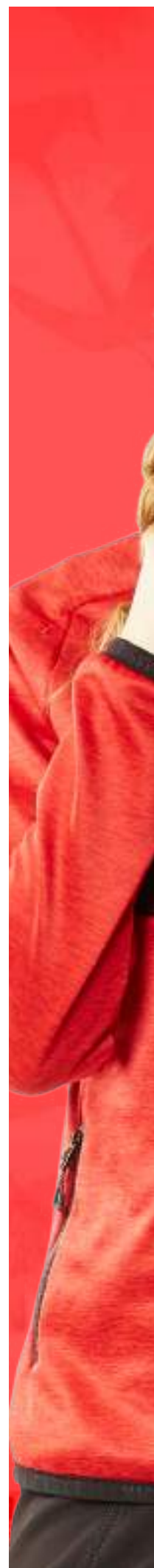
18335-231-91010  
Winter Jacket with CLIMASCOT®-lining,  
breathable, wind- and waterproof



18345-231-91010  
Winter Jacket with CLIMASCOT®-  
lining, ladies fit, breathable, wind- and  
waterproof



20209  
traffic red/  
black









18082-250-20209  
T-shirt, modern fit



18092-801-20209  
T-shirt, ladies fit, moisture wicking  
COOLMAX® PRO, V-neck



18382-959-20209  
T-Shirt, modern fit



18392-959-20209  
T-Shirt, ladies fit



18083-801-20209  
Polo shirt, moisture wicking COOLMAX®  
PRO, modern fit



18081-810-20209  
Polo shirt, moisture wicking COOLMAX®  
PRO, long-sleeved, modern fit



18384-962-20209  
Sweatshirt, modern fit



18394-962-20209  
Sweatshirt, ladies fit



18484-962-20209  
Sweatshirt with zipper, modern fit



18494-962-20209  
Sweatshirt with zipper, ladies fit



18105-951-20209  
Knitted Jumper with zipper, modern fit



18155-951-20209  
Knitted Jumper with zipper, ladies fit



18365-511-20209  
Gilet, four-way stretch, lightweight



18375-511-20209  
Gilet, ladies fit, four-way stretch,  
lightweight



18065-318-20209  
Winter Gilet with CLIMASCOT®-lining,  
water-repellent, lightweight



18025-318-20209  
Jacket with CLIMASCOT®-lining, ladies fit,  
water-repellent



18001-249-20209  
Outer Shell Jacket, windproof and water-  
repellent, lightweight



18011-249-20209  
Outer Shell Jacket, ladies fit, windproof  
and water-repellent



18301-231-20209  
Outer Shell Jacket, breathable, wind and  
waterproof



18311-231-20209  
Outer Shell Jacket, ladies fit, breathable,  
wind and waterproof





18383-961-20209  
Polo shirt, modern fit



18393-961-20209  
Polo Shirt, ladies fit



18381-959-20209  
T-shirt, long-sleeved, modern fit



18391-959-20209  
T-shirt, long-sleeved, ladies fit



18091-810-20209  
T-shirt, ladies fit, moisture wicking  
COOLMAX®PRO, long-sleeved and V-neck



18584-962-20209  
Hoodie with zipper, modern fit



18003-316-20209  
Fleece Jumper with half zip, modern fit



18053-316-20209  
Fleece Jumper with half zip, ladies fit



18103-316-20209  
Fleece Jumper with zipper, modern fit



18153-316-20209  
Fleece Jumper with zipper, ladies fit



18075-318-20209  
Winter Gilet with CLIMASCOT®-lining,  
ladies fit, water-repellent



18303-137-20209  
Fleece Jumper with zipper, modern fit



18101-511-20209  
Jacket, four-way stretch, lightweight



18008-511-20209  
Jacket, ladies fit, four-way stretch,  
lightweight



18015-318-20209  
Jacket with CLIMASCOT®-lining, water-  
repellent, lightweight



18035-249-20209  
Winter Jacket with CLIMASCOT®-lining,  
windproof and water-repellent



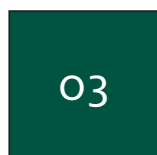
18045-249-20209  
Winter Jacket with CLIMASCOT®-lining,  
ladies fit, windproof and water-repellent



18335-231-20209  
Winter Jacket with CLIMASCOT®-lining,  
breathable, wind- and waterproof

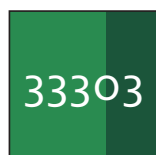


18345-231-20209  
Winter Jacket with CLIMASCOT®-  
lining, ladies fit, breathable, wind- and  
waterproof



03

green



33303

grass green/  
green









18082-250-33303  
T-shirt, modern fit



18092-801-33303  
T-shirt, ladies fit, moisture wicking  
COOLMAX® PRO, V-neck



18382-959-33303  
T-Shirt, modern fit



18392-959-33303  
T-Shirt, ladies fit



18083-801-33303  
Polo shirt, moisture wicking COOLMAX®  
PRO, modern fit



18081-810-33303  
Polo shirt, moisture wicking COOLMAX®  
PRO, long-sleeved, modern fit



18384-962-33303  
Sweatshirt, modern fit



18394-962-33303  
Sweatshirt, ladies fit



18484-962-33303  
Sweatshirt with zipper, modern fit



18494-962-33303  
Sweatshirt with zipper, ladies fit



18105-951-33303  
Knitted Jumper with zipper, modern fit



18155-951-33303  
Knitted Jumper with zipper, ladies fit



18365-511-33303  
Gilet, four-way stretch, lightweight



18375-511-33303  
Gilet, ladies fit, four-way stretch,  
lightweight



18065-318-33303  
Winter Gilet with CLIMASCOT®-lining,  
water-repellent, lightweight



18025-318-33303  
Jacket with CLIMASCOT®-lining, ladies fit,  
water-repellent



18001-249-33303  
Outer Shell Jacket, windproof and water-  
repellent, lightweight



18011-249-33303  
Outer Shell Jacket, ladies fit, windproof  
and water-repellent



18301-231-33303  
Outer Shell Jacket, breathable, wind and  
waterproof



18311-231-33303  
Outer Shell Jacket, ladies fit, breathable,  
wind and waterproof



18078-511-03 DIAMOND  
18088-511-03 PEARL  
Trousers with CORDURA® kneepad  
pockets, ladies fit, four-way stretch,  
lightweight



18279-511-03  
Trousers with thigh pockets, four-way-  
stretch, lightweight



18178-511-03 DIAMOND  
18188-511-03 PEARL  
Trousers with thigh pockets, ladies fit,  
four-way-stretch, lightweight



18479-311-03  
Trousers with CORDURA® kneepad  
pockets, four-way stretch, lightweight



18679-442-03  
Trousers with thigh pockets, stretch  
inserts



18147-511-03 DIAMOND  
18347-511-03 PEARL  
Skirt, ladies fit, four-way stretch,  
lightweight



18047-511-03 DIAMOND  
18247-511-03 PEARL  
Skirt, ladies fit, four-way stretch,  
lightweight





18383-961-33303  
Polo shirt, modern fit



18393-961-33303  
Polo Shirt, ladies fit



18381-959-33303  
T-shirt, long-sleeved, modern fit



18391-959-33303  
T-shirt, long-sleeved, ladies fit



18091-810-33303  
T-shirt, ladies fit, moisture wicking  
COOLMAX®PRO, long-sleeved and V-neck



18584-962-33303  
Hoodie with zipper, modern fit



18003-316-33303  
Fleece Jumper with half zip, modern fit



18053-316-33303  
Fleece Jumper with half zip, ladies fit



18103-316-33303  
Fleece Jumper with zipper, modern fit



18153-316-33303  
Fleece Jumper with zipper, ladies fit



18075-318-33303  
Winter Gilet with CLIMASCOT®-lining,  
ladies fit, water-repellent



18303-137-33303  
Fleece Jumper with zipper, modern fit



18101-511-33303  
Jacket, four-way stretch, lightweight



18008-511-33303  
Jacket, ladies fit, four-way stretch,  
lightweight



18015-318-33303  
Jacket with CLIMASCOT®-lining, water-  
repellent, lightweight



18035-249-33303  
Winter Jacket with CLIMASCOT®-lining,  
windproof and water-repellent



18045-249-33303  
Winter Jacket with CLIMASCOT®-lining,  
ladies fit, windproof and water-repellent



18335-231-33303  
Winter Jacket with CLIMASCOT®-lining,  
breathable, wind- and waterproof



18345-231-33303  
Winter Jacket with CLIMASCOT®-  
lining, ladies fit, breathable, wind- and  
waterproof



18079-511-03  
Trousers with CORDURA® kneepad  
pockets, four-way stretch, lightweight



18579-442-03  
Trousers with CORDURA® kneepad  
pockets, stretch inserts



18379-230-03  
Trousers with CORDURA® kneepad  
pockets, extra lightweight



18569-442-03  
Bib & Brace with CORDURA® kneepad  
pockets, stretch inserts



18149-511-03  
Shorts, four-way stretch, lightweight



18048-511-03 DIAMOND  
18044-511-03 PEARL  
Shorts, ladies fit, four-way stretch,  
lightweight

18

dark anthracite

1809

dark  
anthracite/  
black









18082-250-1809  
T-shirt, modern fit



18092-801-1809  
T-shirt, ladies fit, moisture wicking  
COOLMAX® PRO, V-neck



18382-959-1809  
T-Shirt, modern fit



18392-959-1809  
T-Shirt, ladies fit



18083-801-1809  
Polo shirt, moisture wicking COOLMAX®  
PRO, modern fit



18081-810-1809  
Polo shirt, moisture wicking COOLMAX®  
PRO, long-sleeved, modern fit



18384-962-1809  
Sweatshirt, modern fit



18394-962-1809  
Sweatshirt, ladies fit



18484-962-1809  
Sweatshirt with zipper, modern fit



18494-962-1809  
Sweatshirt with zipper, ladies fit



18105-951-1809  
Knitted Jumper with zipper, modern fit



18155-951-1809  
Knitted Jumper with zipper, ladies fit



18365-511-1809  
Gilet, four-way stretch, lightweight



18375-511-1809  
Gilet, ladies fit, four-way stretch,  
lightweight



18065-318-1809  
Winter Gilet with CLIMASCOT®-lining,  
water-repellent, lightweight



18015-318-1809  
Jacket with CLIMASCOT®-lining, water-  
repellent, lightweight



18025-318-1809  
Jacket with CLIMASCOT®-lining, ladies fit,  
water-repellent



18001-249-1809  
Outer Shell Jacket, windproof and water-  
repellent, lightweight



18011-249-1809  
Outer Shell Jacket, ladies fit, windproof  
and water-repellent



18301-231-1809  
Outer Shell Jacket, breathable, wind and  
waterproof



18079-511-18  
Trousers with CORDURA® kneepad  
pockets, four-way stretch, lightweight



18179-511-18  
Trousers with CORDURA® kneepad  
pockets, four-way stretch, lightweight



18078-511-18 DIAMOND  
18088-511-18 PEARL  
Trousers with CORDURA® kneepad  
pockets, ladies fit, four-way stretch,  
lightweight



18279-511-18  
Trousers with thigh pockets, four-way-  
stretch, lightweight



18178-511-18 DIAMOND  
18188-511-18 PEARL  
Trousers with thigh pockets, ladies fit,  
four-way stretch, lightweight



18379-230-18  
Trousers with CORDURA® kneepad  
pockets, extra lightweight



18569-442-18  
Bib & Brace with CORDURA® kneepad  
pockets, stretch inserts



18149-511-18  
Shorts, four-way stretch, lightweight



18048-511-18 DIAMOND  
18044-511-18 PEARL  
Shorts, ladies fit, four-way stretch,  
lightweight





18383-961-1809  
Polo shirt, modern fit



18393-961-1809  
Polo shirt, ladies fit



18381-959-1809  
T-shirt, long-sleeved, modern fit



18391-959-1809  
T-shirt, long-sleeved, ladies fit



18091-810-1809  
T-shirt, ladies fit, moisture wicking  
COOLMAX®PRO, long-sleeved and V-neck



18584-962-1809  
Hoodie with zipper, modern fit



18003-316-1809  
Fleece jumper with half zip, modern fit



18053-316-1809  
Fleece jumper with half zip, ladies fit



18103-316-1809  
Fleece jumper with zipper, modern fit



18153-316-1809  
Fleece jumper with zipper, ladies fit



18075-318-1809  
Winter Gilet with CLIMASCOT®-lining,  
ladies fit, water-repellent



18303-137-1809  
Fleece jumper with zipper, modern fit



18101-511-1809  
Jacket, four-way stretch, lightweight



18008-511-1809  
Jacket, ladies fit, four-way stretch,  
lightweight



18509-442-1809  
Jacket, stretch inserts



18311-231-1809  
Outer Shell Jacket, ladies fit, breathable,  
wind and waterproof



18035-249-1809  
Winter Jacket with CLIMASCOT®-lining,  
windproof and water-repellent



18045-249-1809  
Winter Jacket with CLIMASCOT®-lining,  
ladies fit, windproof and water-repellent



18335-231-1809  
Winter Jacket with CLIMASCOT®-lining,  
breathable, wind- and waterproof



18345-231-1809  
Winter Jacket with CLIMASCOT®-  
lining, ladies fit, breathable, wind- and  
waterproof



18479-311-18  
Trousers with CORDURA® kneepad  
pockets, four-way stretch, lightweight



18679-442-18  
Trousers with thigh pockets, stretch  
inserts



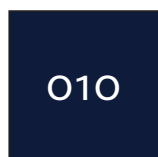
18579-442-18  
Trousers with CORDURA® kneepad  
pockets, stretch inserts



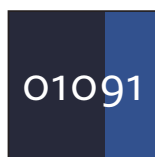
18779-230-18  
Trousers, extra lightweight



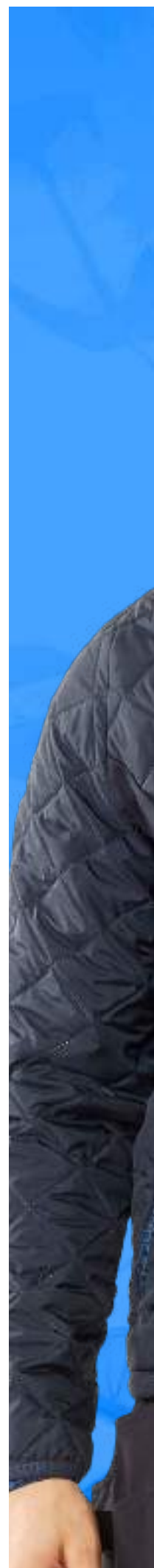
18478-230-18 DIAMOND  
18488-230-18 PEARL  
Trousers, ladies fit, extra lightweight



dark navy



dark navy/  
azure blue









18082-250-01091  
T-shirt, modern fit



18092-801-010  
T-shirt, ladies fit, moisture wicking  
COOLMAX® PRO, V-neck



18382-959-01091  
T-Shirt, modern fit



18392-959-01091  
T-Shirt, ladies fit



18083-801-010  
Polo shirt, moisture wicking COOLMAX®  
PRO, modern fit



18081-810-010  
Polo shirt, moisture wicking COOLMAX®  
PRO, long-sleeved, modern fit



18384-962-01091  
Sweatshirt, modern fit



18394-962-01091  
Sweatshirt, ladies fit



18484-962-01091  
Sweatshirt with zipper, modern fit



18494-962-01091  
Sweatshirt with zipper, ladies fit



18105-951-010  
Knitted Jumper with zipper, modern fit



18155-951-010  
Knitted Jumper with zipper, ladies fit



18365-511-010  
Gilet, four-way stretch, lightweight



18375-511-010  
Gilet, ladies fit, four-way stretch,  
lightweight



18065-318-010  
Winter Gilet with CLIMASCOT®-lining,  
water-repellent, lightweight



18015-318-010  
Jacket with CLIMASCOT®-lining, water-  
repellent, lightweight



18025-318-010  
Jacket with CLIMASCOT®-lining, ladies fit,  
water-repellent



18001-249-010  
Outer Shell Jacket, windproof and water-  
repellent, lightweight



18011-249-010  
Outer Shell Jacket, ladies fit, windproof  
and water-repellent



18301-231-010  
Outer Shell Jacket, breathable, wind and  
waterproof



18079-511-010  
Trousers with CORDURA® kneepad  
pockets, four-way stretch, lightweight



18179-511-010  
Trousers with CORDURA® kneepad  
pockets, four-way stretch, lightweight



18078-511-010 DIAMOND  
18088-511-010 PEARL  
Trousers with CORDURA® kneepad  
pockets, ladies fit, four-way stretch,  
lightweight



18279-511-010  
Trousers with thigh pockets, four-way-  
stretch, lightweight



18178-511-010 DIAMOND  
18188-511-010 PEARL  
Trousers with thigh pockets, ladies fit,  
four-way stretch, lightweight



18779-230-010  
Trousers, extra lightweight



18478-230-010 DIAMOND  
18488-230-010 PEARL  
Trousers, ladies fit, extra lightweight



18379-230-010  
Trousers with CORDURA® kneepad  
pockets, extra lightweight



18569-442-010  
Bib & Brace with CORDURA® kneepad  
pockets, stretch inserts



18249-311-010  
¾ Length Trousers with kneepad and  
holster pockets, four-way stretch,  
lightweight





18383-961-01091  
Polo shirt, modern fit



18393-961-01091  
Polo shirt, ladies fit



18381-959-01091  
T-shirt, long-sleeved, modern fit



18391-959-01091  
T-shirt, long-sleeved, ladies fit



18091-810-010  
T-shirt, ladies fit, moisture wicking  
COOLMAX®PRO, long-sleeved and V-neck



18584-962-01091  
Hoodie with zipper, modern fit



18003-316-010  
Fleece jumper with half zip, modern fit



18053-316-010  
Fleece jumper with half zip, ladies fit



18103-316-010  
Fleece jumper with zipper, modern fit



18153-316-010  
Fleece jumper with zipper, ladies fit



18075-318-010  
Winter Gilet with CLIMASCOT®-lining,  
ladies fit, water-repellent



18303-137-010  
Fleece jumper with zipper, modern fit



18101-511-010  
Jacket, four-way stretch, lightweight



18008-511-010  
Jacket, ladies fit, four-way stretch,  
lightweight



18509-442-010  
Jacket, stretch inserts



18311-231-010  
Outer Shell Jacket, ladies fit, breathable,  
wind and waterproof



18035-249-010  
Winter Jacket with CLIMASCOT®-lining,  
windproof and water-pellent



18045-249-010  
Winter Jacket with CLIMASCOT®-lining,  
ladies fit, windproof and water-repellent



18335-231-010  
Winter Jacket with CLIMASCOT®-lining,  
breathable, wind- and waterproof



18345-231-010  
Winter Jacket with CLIMASCOT®-  
lining, ladies fit, breathable, wind- and  
waterproof



18479-311-010  
Trousers with CORDURA® kneepad  
pockets, four-way stretch, lightweight



18031-311-010  
Trousers with CORDURA® kneepad  
and holster pockets, four-way stretch,  
lightweight



18679-442-010  
Trousers with thigh pockets, stretch  
inserts



18579-442-010  
Trousers with CORDURA® kneepad  
pockets, stretch inserts



18531-442-010  
Trousers with CORDURA® kneepad  
pockets and holster pockets, stretch  
inserts



18149-511-010  
Shorts, four-way stretch, lightweight



18048-511-010 DIAMOND  
18044-511-010 PEARL  
Shorts, ladies fit, four-way stretch,  
lightweight



18147-511-010 DIAMOND  
18347-511-010 PEARL  
Skirt, ladies fit, four-way stretch,  
lightweight



18047-511-010 DIAMOND  
18247-511-010 PEARL  
Skirt, ladies fit, four-way stretch,  
lightweight

09

black









18365-511-09

Gilet, four-way stretch, lightweight



18375-511-09

Gilet, ladies fit, four-way stretch, lightweight



18065-318-09

Winter Gilet with CLIMASCOT®-lining, water-repellent, lightweight



18075-318-09

Winter Gilet with CLIMASCOT®-lining, ladies fit, water-repellent



18303-137-09

Fleece Jumper with zipper, modern fit



18001-249-09

Outer Shell Jacket, windproof and water-repellent, lightweight



18011-249-09

Outer Shell Jacket, ladies fit, windproof and water-repellent



18301-231-09

Outer Shell Jacket, breathable, wind and waterproof



18311-231-09

Outer Shell Jacket, ladies fit, breathable, wind and waterproof



18035-249-09

Winter Jacket with CLIMASCOT®-lining, windproof and water-repellent



18078-511-09 DIAMOND

18088-511-09 PEARL

Trousers with CORDURA® kneepad pockets, ladies fit, four-way stretch, lightweight



18279-511-09

Trousers with thigh pockets, four-way stretch, lightweight



18178-511-09 DIAMOND

18188-511-09 PEARL

Trousers with thigh pockets, ladies fit, four-way stretch, lightweight



18479-311-09

Trousers with CORDURA® kneepad pockets, four-way stretch, lightweight



18031-311-09

Trousers with CORDURA® kneepad and holster pockets, four-way stretch, lightweight



18379-230-09

Trousers with CORDURA® kneepad pockets, extra lightweight



18569-442-09

Bib & Brace with CORDURA® kneepad pockets, stretch inserts



18249-311-09

¾ Length Trousers with kneepad and holster pockets, four-way stretch, lightweight



18149-511-09

Shorts, four-way stretch, lightweight



18048-511-09 DIAMOND

18044-511-09 PEARL

Shorts, ladies fit, four-way stretch, lightweight





18101-511-09

Jacket, four-way stretch, lightweight



18008-511-09

Jacket, ladies fit, four-way stretch, lightweight



18509-442-09

Jacket, stretch inserts



18015-318-09

Jacket with CLIMASCOT®-lining, water-repellent, lightweight



18025-318-09

Jacket with CLIMASCOT®-lining, ladies fit, water-repellent



18045-249-09

Winter Jacket with CLIMASCOT®-lining, ladies fit, windproof and water-repellent



18335-231-09

Winter Jacket with CLIMASCOT®-lining, breathable, wind- and waterproof



18345-231-09

Winter Jacket with CLIMASCOT®-lining, ladies fit, breathable, wind- and waterproof



18079-511-09

Trousers with CORDURA® kneepad pockets, four-way stretch, lightweight



18179-511-09

Trousers with CORDURA® kneepad pockets, four-way stretch, lightweight



18679-442-09

Trousers with thigh pockets, stretch inserts



18579-442-09

Trousers with CORDURA® kneepad pockets, stretch inserts



18531-442-09

Trousers with CORDURA® kneepad pockets and holster pockets, stretch inserts



18779-230-09

Trousers, extra lightweight



18478-230-09 DIAMOND

18488-230-09 PEARL  
Trousers, ladies fit, extra lightweight



18147-511-09 DIAMOND

18347-511-09 PEARL  
Skirt, ladies fit, four-way stretch, lightweight



18047-511-09 DIAMOND

18247-511-09 PEARL  
Skirt, ladies fit, four-way stretch, lightweight

# 3

## Sustainable production

Most of the MASCOT® ACCELERATE clothing is produced in the company's own factories, where production is conducted efficiently and with great respect for the environment and people.



### MASCOT takes its responsibility for the environment and people seriously

MASCOT strives to create sustainable solutions throughout the entire production chain. As a global textiles company, we have an enormous responsibility to safeguard the people and the environment at our production sites and throughout the rest of our supply chain. This is a responsibility that we take very seriously.





*The 17 sustainability goals describe a number of global challenges. These commit all UN member countries to strive towards achieving the goals. The global goals are interdependent and balance the three dimensions of sustainable development: economical, social and environmental development.*

## The 17 global goals

The UN has formulated 17 global goals for sustainable development, which it expects all countries, companies and organisations to meet by 2030. The 17 global goals are common points of orientation, so that all players can realise the global need for business solutions that can help create a sustainable future for the generations to come.

## MASCOT and the global goals

MASCOT works with all of the 17 global goals at different levels, and we will continue to develop and intensify our work in this area towards 2030. As part of our workwear production, we want to help eliminate poverty and hunger, ensure health and education for all, and provide decent jobs, among other things. Read more about how we do this on the following pages.



# Decent jobs bring people out of poverty







## Eliminate poverty

MASCOT produces clothing in countries where poverty is a challenge. By offering good, decent jobs with reasonable pay, we help increase living standards in these areas.

In Laos, 22.7% of the population lives in extreme poverty. In Vietnam, this figure is 2.6%. MASCOT is continually expanding production in Laos, so that we can employ more people and help reduce the number of people who live in extreme poverty. Employees are typically recruited to the factories from surrounding villages, where extreme poverty is rife. To reduce employees' costs and increase their personal safety, MASCOT also provides daily transport between the factory and villages.



## Gender equality

The 5th global goal focuses on ensuring gender equality, and on ensuring that women's and girls' rights are strengthened globally.

More than 2,400 of MASCOT's employees work outside Europe, where gender inequality in society tends to be the greatest. Gender inequality here is noted in areas such as health, co-management and business activity.

At MASCOT's factories in Vietnam, 86% of employees are women. In MASCOT's Laos factories, 81% of employees are women. MASCOT's policy is naturally for all employees to have the same opportunities, just as it is always the best qualified people who are employed, regardless of gender. With a majority of female employees, we reduce gender inequality, as business activity helps increase equality. Access to the company's free medical clinic also means that women's access to better health is increased.



## Decent jobs and economic growth

MASCOT invests heavily in innovation and market development. Both of these generate growth, which results in further productive employment as MASCOT's investments are made in both technology and management systems. This also applies to our production in Vietnam and Laos.

Salaries for MASCOT's employees in Vietnam and Laos are increasing far more, year on year, on a percentage basis, than salaries in Europe. This means that MASCOT not only helps reduce inequality across borders, we also help to generally increase the level of pay in those areas where we have factories. And with the good working environment that we offer our employees, we also increase the working conditions in the local area in general, as otherwise employers in the region would lose their employees. We create decent jobs and thereby give other players in the local area an incentive to do the same.



# Healthy employees

When you set up production facilities in developing countries, you have an obligation to increase health, wellbeing and safety for employees. Or at least that is how MASCOT sees it. That is why MASCOT provides free access to medical assistance and health information, as well as a free nutritious lunch for all employees.



## Free lunch

Every day, MASCOT employees sit down to lunch and get a good, nutritious meal. MASCOT's doctors and nurses work closely with the chefs, and food samples are taken every day in order to ensure high levels of quality and to ensure a sufficient calorie content. MASCOT's lunch helps increase food safety and to improve the standard of nutrition for employees.





## Happy and healthy employees are good employees

MASCOT has around 2,400 employees in Southeast Asia working in a European work culture and with MASCOT's strong values. This results in safe, secure and decent workplaces with huge development potential for MASCOT's employees. The employment contract also includes access to a free medical clinic, health information, training in safety, and a good, free lunch.

Healthy and happy employees have energy for their job. This is noticeable in the production in Vietnam and Laos. Just like the European MASCOT employees, they are dedicated to the mission of creating the world's best workwear - based on durability in both production quality and in socially responsible production.



**Free access to doctors and healthcare staff**  
All employees at MASCOT's factories can visit MASCOT's state-certified health clinics on a daily basis. The doctors and nurses don't just provide treatments. They also provide preventative healthcare and create information campaigns on various health topics. They also work on creating a positive mental working environment.





# Responsible production

## Durable products are sustainable products

Responsible consumption is, for example, buying products that last a long time, to avoid frequently buying new products and using new resources. This also applies to workwear.

MASCOT only offers products that have been tested for long-term use. This applies to everything from fabric and reinforced seams to extra reinforcement in areas that are particularly subjected to wear and tear. We produce clothes in our own factories and can therefore guarantee 100% quality control. All this means that MASCOT's products last a long time. And this has a major impact on the sustainable balance sheet.

*To ensure quality, many of the fabric types have undergone a thorough course of testing, such as wear tests, tear strength tests and break tests. High quality is at the core of MASCOT's DNA. MASCOT's slogan and consistent work method has always been TESTED TO WORK.*



## Recycled resources

Many resources are used in the world's industries, but there will not always be an endless supply of new resources. That is why we need to focus on using recycled materials - waste and used materials - that can be recycled. That's what we do at MASCOT.

All of MASCOT's padded lining is made using a large amount of recycled polyester. MASCOT also has a large range of T-shirts, polo shirts and sweatshirts made from recycled plastic, which has been transformed into new polyester yarns. Other products are made from organic cotton, which means that the cotton is grown without the use of pesticides or sprayed chemicals.

Not all products are made from recycled materials, as in some areas this can affect, for example, wear resistance, quality or colour. However, a large part of the packaging comes from recycled materials. At MASCOT, cardboard boxes, paper and a new generation of plastic product bags are either wholly or partly made from recycled materials.





## 12 RESPONSIBLE CONSUMPTION AND PRODUCTION



# Responsible consumption and production

Economic growth and sustainable development require that we show due care and diligence when using our products and resources. We must ensure that our consumption and the way we produce our clothes around the world are done responsibly and with respect for current and future people and the environment.



## Minimising waste, energy consumption and rubbish in production

Sustainable production also includes limiting waste, rubbish and emissions. Producing clothing is a comprehensive and global process. There are many stages involved.

### Fabric and other raw materials

We work with all suppliers towards a general reduction in the use of chemicals and water. We also choose suppliers based on their environment profile. Most of our piece goods come from suppliers that have both Bluesign® and are ISO 14001 certified. We are also striving to convert part of the dyeing process to dyeing without or with only minimal use of water.

### Own production

MASCOT has a great advantage in that we produce the majority of our products ourselves. 75% of all products are made in our own factories, where we control the processes. MASCOT's factories are located in official, established industrial zones that have been approved by the state ministries in Vietnam and in Laos. All have a comprehensive environment policy and ongoing control of waste management. Wastewater treatment is undertaken by the industrial zones and monitored by environmental agencies. Inspections are made quarterly. MASCOT sorts and registers all waste and as much as possible is collected with recycling in mind. Fabric off-cuts from production are heavily minimised and are also sorted and recycled. MASCOT also has a policy around sustainable climate impact that applies to its own factories, and initiatives are regularly being launched to reduce the production's impact on the environment.



# CSR-certified production

MASCOT's production is certified according to the most comprehensive certification within CSR – SA8000.

The vast majority of MASCOT's products – from our winter clothing to our workwear – is made at our very own factories. When many millions of quality products need to be produced each year in an effective production chain, there is a definite need for skilled and dedicated employees. That is why we have our own, experienced HR departments, both in Vietnam and in Laos. Since we recruit all of our employees ourselves, we can guarantee compliance with the minimum age limit for full time work and ensure that there is no child labour at our factories. All employees have good employment conditions with good salaries, and there is complete transparency with regards to remuneration and bonuses. Any overtime hours are reported in advance and remunerated in accordance with higher percentage rates. Employees naturally have freedom of association and the right to collective bargaining.

Companies that achieve SA8000 have, for example:



No child labour



No forced labour



A good working environment adapted to local conditions



Reasonable working hours and wages



The right to organise



No discrimination



An effective management system for control of subcontractors' employee relations



Health and Safety

Read more about SA8000 here: [www.mascotworkwear.com/en/sa8000](http://www.mascotworkwear.com/en/sa8000)





17 PARTNERSHIPS  
FOR THE GOALS



# No one can solve the global challenge alone

## Partnerships for the goals

The 17th global goal is about partnerships. No one can solve the global challenge alone. It requires collaboration and forward-looking partnerships.

MASCOT already has a long line of established partnerships with stakeholders in our production countries. We collaborate with ministries and governments, just as we collaborate with organisations that work with the textile industry, so that together with other stakeholders we can promote both social and environmental conditions in the world's textile-producing countries.

MASCOT is constantly building new partnerships. For example, we are currently working on partnership with several different players in the value chain, to invest with them in new technologies that can create a more sustainable and rational production.



*MASCOT is a member of the Fair Wear Foundation. Together with around 100 other textile producing companies, MASCOT strives via Fair Wear to increase social responsibility in all textile-producing factories around the world.*







**MASCOT®**  
**WORKWEAR**

**Audi Sport**  
Official Supplier



# Tested to Work by Audi Sport

»Comfortable workwear is of utmost importance to us. We work a lot and under great pressure in restricted spaces, which means that our clothing needs to support and help us when we're moving around and under the car.«

---

Mechanic, Audi Sport



# 4

## Trousers for every situation



**100% stretch, for industrial washing**

**FABRIC QUALITY 511**  
Composition: 92% nylon/8% elastane  
Weight per m²: 260 grams

Durability: 3 

Tear strength: 4,5 

 **ULTIMATE STRETCH**

 **WATER REPELLENT**

 **OEKO-TEX®**  
CONFIDENCE IN TEXTILES  
**STANDARD 100**  
5548 Shirley  
Tested for harmful substances.  
[www.oeko-tex.com/standard100](http://www.oeko-tex.com/standard100)

 **ProWash®**  
EN ISO 15797

See the products on page 50.



**100% stretch**

**FABRIC QUALITY 311**  
Composition: 93% nylon/7% elastane  
Weight per m²: 250 grams

Durability: 5 

Tear strength: 4,5 

 **ULTIMATE STRETCH**

 **WATER REPELLENT**

 **OEKO-TEX®**  
CONFIDENCE IN TEXTILES  
**STANDARD 100**  
5548 Shirley  
Tested for harmful substances.  
[www.oeko-tex.com/standard100](http://www.oeko-tex.com/standard100)

See the products on page 62.



MASCOT® ACCELERATE offers trousers in four different fabric quality combinations, with each one offering its own unique properties. Individual employees can choose the right trousers for their own preferences and working conditions while simultaneously matching a common and cohesive look across the workplace.

Look for the three digits that follow the five digit style number. These 3 digits are the code for the product's properties.



## Lightweight twill with stretch zones

### COMBI-FABRIC QUALITY 442/511

Composition: 65% polyester/35% cotton and  
92% polyester/8% elastolefin  
442: Weight per m<sup>2</sup>: 270 grams  
511: Weight per m<sup>2</sup>: 260 grams

Durability: 3

Tear strength: 3



STRETCH ZONES



See the products on page 66.



## Super lightweight twill fabric

### FABRIC QUALITY 230

Composition: 50%cotton/50% polyester  
Weight per m<sup>2</sup>: 205 grams

Durability: 3

Tear strength: 2



LIGHTWEIGHT



See the products on page 70.

100% stretch, for  
industrial washing

## Newly developed four-way stretch material – fabric quality 511



### Flexible kneepad pockets

Our kneepad pockets are adjustable and made of durable CORDURA fibre. The kneepads are inserted via a zip on the side of the leg. They can easily be removed during the work day so you can take them off to keep cool when they aren't needed. Ventilation channels on the inside of the leg can also be opened to let air circulate and prevent your knees from getting too hot.



### Four-way stretch material

MASCOT's stretch material is elastic in all directions – and not just by a small amount. This gives unrivalled freedom of movement, where nothing feels tight or uncomfortable. You can barely feel the material against your skin as the inside is soft and the pockets are integrated into the design. Moreover, the multifunctional material combines a low weight with a very high wear resistance, and has a water repellent finish.



As an alternative to trousers in fabric quality 511, MASCOT also offers trousers in a combination of the well-known fabric quality 442, but with stretch panels made from fabric quality 511. See more on page 66.



»The new 511 stretch fabric combines ultimate four-way stretch qualities with the ability to withstand industrial washing. It is completely unique«

---

Michael Grosbøl, managing director

  
**ProWash®**  

---

EN ISO 15797

---

**Elastic stretch material,  
tested for industrial washing**

Our stretch material has been developed using the most advanced elastic fibres on the market. This means that the material can withstand industrial washing at up to 75 degrees, as well as tunnel drying. Many of the products in the MASCOT® ACCELERATE range have been tested in accordance with the industrial washing standard EN ISO 15797. Look for the ProWash® label for clothes suitable for industrial washing.



#### **Integrated pockets with plenty of space for tools**

These trousers have a thigh pocket that features a phone compartment and a detachable ID card holder, a durable folding rule pocket made of CORDURA® with extra pockets, and front and back pockets. The pockets are fully integrated into the design. Thanks to the elastic material, you can fill up your pockets without reducing your freedom of movement.







**CORDURA**<sup>®</sup>  
F A B R I C



# Trousers with kneepad pockets in durable CORDURA®



010 09 18



**18179-511 | Trousers with CORDURA® kneepad pockets, four-way stretch, lightweight**

92% polyester/8% elastolefin - 260 g/m²

Tested in accordance with EN ISO 15797. When using MASCOT® Waterloo kneepads, the requirements according to EN 14404 are met.

Leg length and size: 76 cm: C 46-C 56 • 82 cm: C 42-C 68 • 90 cm: C 46-C 62

- Four way stretch material provides unique freedom of movement and comfort.
- The water-repellent multifunctional stretch material combines a low weight with a very high durability.
- The stretch material can be industrial laundered according to EN ISO 15797.
- Low waist with form-cut waistband ensures comfort and freedom of movement.
- Excellent ventilation at the knee area via a zipper on the side of the leg.



010 03 09 18



**18079-511 | Trousers with CORDURA® kneepad pockets, four-way stretch, lightweight**

92% polyester/8% elastolefin - 260 g/m²

Tested in accordance with EN ISO 15797. When using MASCOT® Waterloo kneepads, the requirements according to EN 14404 are met.

Leg length and size: 76 cm: C 46-C 56 • 82 cm: C 42-C 68 • 90 cm: C 46-C 62

- Four way stretch material provides unique freedom of movement and comfort.
- The water-repellent multifunctional stretch material combines a low weight with a very high durability.
- The stretch material can be industrial laundered according to EN ISO 15797.
- Low waist with form-cut waistband ensures comfort and freedom of movement.
- Excellent ventilation at the knee area via a zipper on the side of the leg.



010 03 09 18



**18078-511 | Trousers with CORDURA® kneepad pockets, ladies fit DIAMOND, four-way stretch, lightweight**

**18088-511 | Trousers with CORDURA® kneepad pockets, ladies fit PEARL, four-way stretch, lightweight**

92% polyester/8% elastolefin - 260 g/m²

Tested in accordance with EN ISO 15797. When using MASCOT® Waterloo kneepads, the requirements according to EN 14404 are met.

Leg length and size: 76 cm: 34-56 • 82 cm: 34-56

- Diamond fit is especially designed for women with a difference of more than 20 centimetres between their waist and hip measurements.
- Pearl fit is especially designed for women with a difference of less than 20 centimetres between their waist and hip measurements.
- Four way stretch material provides unique freedom of movement and comfort.
- The water-repellent multifunctional stretch material combines a low weight with a very high durability.
- Excellent ventilation at the knee area via a zipper on the side of the leg.

# Trousers with thigh pockets



010

03

09

18



## 18279-511 | Trousers with thigh pockets, four-way-stretch, lightweight

92% polyester/8% elastolefin - 260 g/m<sup>2</sup>

Tested in accordance with EN ISO 15797.

Leg length and size: 76 cm: C 46-C 56 • 82 cm: C 42-C 68 • 90 cm: C 46-C 62

- Four way stretch material provides unique freedom of movement and comfort.
- The water-repellent multifunctional stretch material combines a low weight with a very high durability.
- The stretch material can be industrial laundered according to EN ISO 15797.
- Low waist with form-cut waistband ensures comfort and freedom of movement.
- Ergonomically shaped trouser legs are constructed to follow the body's natural movements.





**18178-511 | Trousers with thigh pockets, ladies fit DIAMOND, four-way-stretch, lightweight**

**18188-511 | Trousers with thigh pockets, ladies fit PEARL, four-way-stretch, lightweight**

92% polyester/8% elastolefin - 260 g/m<sup>2</sup>

Tested in accordance with EN ISO 15797.

Leg length and size: 76 cm: 34-56 • 82 cm: 34-56

- Diamond fit is especially designed for women with a difference of more than 20 centimetres between their waist and hip measurements.
- Pearl fit is especially designed for women with a difference of less than 20 centimetres between their waist and hip measurements.
- Four way stretch material provides unique freedom of movement and comfort.
- The water-repellent multifunctional stretch material combines a low weight with a very high durability.
- Low waist with form-cut waistband ensures comfort and freedom of movement.



# Durable, lightweight, elastic shorts



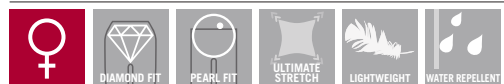
## 18149-511 | Shorts, four-way stretch, lightweight

92% polyester/8% elastolefin - 260 g/m<sup>2</sup>

Tested in accordance with EN ISO 15797.

Leg length and size: 29 cm: C 42-C 68

- The water-repellent multifunctional stretch material combines a low weight with a very high durability.
- Four way stretch material provides unique freedom of movement and comfort.
- The stretch material can be industrial laundered according to EN ISO 15797.
- Waist band formed following the body's anatomy so that it supports in all working positions.
- Ruler pocket of CORDURA® with extra pockets.



## 18048-511 | Shorts, ladies fit DIAMOND, four-way stretch, lightweight

## 18044-511 | Shorts, ladies fit PEARL, four-way stretch, lightweight

92% polyester/8% elastolefin - 260 g/m<sup>2</sup>

Tested in accordance with EN ISO 15797.

Leg length and size: 29 cm: 34-56

- Diamond fit is especially designed for women with a difference of more than 20 centimetres between their waist and hip measurements.
- Pearl fit is especially designed for women with a difference of less than 20 centimetres between their waist and hip measurements.
- The water-repellent multifunctional stretch material combines a low weight with a very high durability.
- Four way stretch material provides unique freedom of movement and comfort.
- Waist band formed following the body's anatomy so that it supports in all working positions.





# Two newly developed fits for women

The MASCOT® ACCELERATE range includes trousers, shorts and skirts for women in two different fits: DIAMOND and PEARL.

The difference between the two fits is mainly the relation between the waist and hip measurements.



DIAMOND: Bigger difference between the hip and waist measurements (more than 20 cm difference).



PEARL: Slight difference between the hip and waist measurements (less than 20 cm difference).

## Huge study into the fit for women

Prior to the development of MASCOT® ACCELERATE, a comprehensive study was undertaken into the fits for women. Measurements were taken from a large number of women across various industries, with these many thousands of measurements then being used to develop two whole new fits that are completely updated for the female bodies of today, and entirely unique to MASCOT. We have named these two new fits DIAMOND and PEARL. These new fits have similarly undergone thorough testing in a range of different industries.





**DIAMOND FIT**



**PEARL FIT**







# Skirts in two different fits and lengths

All skirts are available in both DIAMOND and PEARL. Both fits come in many different sizes and in two lengths, 45 and 55 cm.



010



03



09



DIAMOND FIT



PEARL FIT



ULTIMATE STRETCH



LIGHTWEIGHT



WATER REPELLENT



18147-511 | Skirt, ladies fit DIAMOND, four-way stretch, lightweight

18347-511 | Skirt, ladies fit PEARL, four-way stretch, lightweight

92% polyester/8% elastolefin - 260 g/m<sup>2</sup>

Tested in accordance with EN ISO 15797.

Length and size: 55 cm: 34-56

- Diamond fit is especially designed for women with a difference of more than 20 centimetres between their waist and hip measurements.
- Pearl fit is especially designed for women with a difference of less than 20 centimetres between their waist and hip measurements.
- The water-repellent multifunctional stretch material combines a low weight with a very high durability.
- Four way stretch material provides unique freedom of movement and comfort.
- Ruler pocket of CORDURA® with extra pockets.



010



03



09



DIAMOND FIT



PEARL FIT



ULTIMATE STRETCH



LIGHTWEIGHT



WATER REPELLENT



18247-511 | Skirt, ladies fit PEARL, four-way stretch, lightweight

18047-511 | Skirt, ladies fit DIAMOND, four-way stretch, lightweight

92% polyester/8% elastolefin - 260 g/m<sup>2</sup>

Tested in accordance with EN ISO 15797.

Length and size: 45 cm: 34-48

- Diamond fit is especially designed for women with a difference of more than 20 centimetres between their waist and hip measurements.
- Pearl fit is especially designed for women with a difference of less than 20 centimetres between their waist and hip measurements.
- The water-repellent multifunctional stretch material combines a low weight with a very high durability.
- Four way stretch material provides unique freedom of movement and comfort.
- Ruler pocket of CORDURA® with extra pockets.

# 100% stretch

## MASCOT's fabric quality 311 has quickly become a very popular trouser material.

The material stretches in all directions, while also being lightweight and extremely durable. It feels soft and comfy against the skin, and has a water-repellent finish. Fabric quality 311 gives products an unparalleled freedom of movement.



### 18249-311 | ¾ Length Trousers with kneepad and holster pockets, four-way stretch, lightweight

93% nylon/7% elastane - 250 g/m<sup>2</sup>

When using MASCOT® Waterloo kneepads, the requirements according to EN 14404 are met.

Leg length and size: 53 cm: C 44-C 66

- Four way stretch material provides unique freedom of movement and comfort.
- The water-repellent multifunctional stretch material combines a low weight with a very high durability.
- Low waist with form-cut waistband ensures comfort and freedom of movement.
- Holster pockets of durable CORDURA®.
- Kneepad pockets of durable CORDURA®.

## 3/4 length trousers that fit – no matter your height

Unlike our regular trousers, 3/4 length trousers only come in one leg length, so you may want to adjust this length. These 3/4 length trousers allow you to make adjustments in the knee area so you can be sure that your kneepads are always positioned correctly for your height and leg length. By using the elastic drawstring on the side to adjust your trousers, you can be sure to always get the most out of these ergonomically designed trouser legs.





ULTIMATE  
**STRETCH**





ULTIMATE  
**STRETCH**



# Trousers in 100% stretch material

Lightweight. Extremely wear-resistant. Unrestricted freedom of movement.



010

09

03

18



**CORDURA**  
F A B R I C

## 18479-311 | Trousers with CORDURA® kneepad pockets, four-way stretch, lightweight

93% nylon/7% elastane - 250 g/m²

When using MASCOT® Waterloo kneepads, the requirements according to EN 14404 are met.

Leg length and size: 76 cm: C 46-C 56 • 82 cm: C 42-C 68 • 90 cm: C 46-C 62

- Four way stretch material provides unique freedom of movement and comfort.
- The water-repellent multifunctional stretch material combines a low weight with a very high durability.
- Low waist with form-cut waistband ensures comfort and freedom of movement.
- The kneepad pockets of durable CORDURA® are adjustable so the kneepads have the optimal position on your knees.
- The kneepads are easily inserted from the sides via a zipper, even while wearing the trousers.



010

09



**CORDURA**  
F A B R I C

## 18031-311 | Trousers with CORDURA® kneepad and holster pockets, four-way stretch, lightweight

93% nylon/7% elastane - 250 g/m²

When using MASCOT® Waterloo kneepads, the requirements according to EN 14404 are met.

Leg length and size: 76 cm: C 46-C 56 • 82 cm: C 42-C 68 • 90 cm: C 46-C 62

- Four way stretch material provides unique freedom of movement and comfort.
- The water-repellent multifunctional stretch material combines a low weight with a very high durability.
- Holster pockets of durable CORDURA®.
- The kneepad pockets of durable CORDURA® are adjustable so the kneepads have the optimal position on your knees.
- Excellent ventilation at the knee area via a zipper on the side of the leg.

# Lightweight twill with stretch zones

Combination of two types of material each with their own benefits – lightweight, fixed material with panels of stretch material

Several garments in the MASCOT® ACCELERATE range combine the well-known fabric quality 442 with stretch panels of the newly developed fabric quality 511. The trousers are made of a light twill material with stretch panels at the back of the knee and by the waistband. These areas in particular benefit from extra flexibility to ensure optimal freedom of movement and comfort throughout the work day. The trousers can withstand industrial washing at up to 75 degrees, followed by tunnel drying, and are tested in accordance with EN ISO 15797.



## 18679-442 | Trousers with thigh pockets, stretch inserts

65% polyester/35% cotton - 270 g/m²

Tested in accordance with EN ISO 15797.

Leg length and size: 76 cm: C 46-C 56 • 82 cm: C 42-C 68 • 90 cm: C 46-C 62

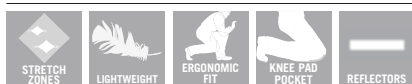
- Many elastic inserts provide unique freedom of movement.
- Low waist with form-cut waistband ensures comfort and freedom of movement.
- Ergonomically shaped trouser legs are constructed to follow the body's natural movements.
- Ruler pocket.
- Extra visibility with the help of reflectors.





**STRETCH  
ZONES**

**ProWash®**  
EN ISO 15797



#### 18569-442 | Bib & Brace with CORDURA® kneepad pockets, stretch inserts

65% polyester/35% cotton - 270 g/m²

Tested in accordance with EN ISO 15797. When using MASCOT® Waterloo kneepads, the requirements according to EN 14404 are met.

Leg length and size: 76 cm: C 46-C 56 • 82 cm: C 42-C 68 • 90 cm: C 46-C 62

- Many elastic inserts provide unique freedom of movement.
- Ergonomically shaped trouser legs are constructed to follow the body's natural movements.
- The kneepad pockets of durable CORDURA® are adjustable so the kneepads have the optimal position on your knees.
- As standard in three different leg lengths, so you can choose the best fit and optimal placement of details just for you.
- To achieve the best possible comfort, we recommend that you choose MASCOT® Waterloo kneepads for this model.





**STRETCH  
ZONES**



#### 18579-442 | Trousers with CORDURA® kneepad pockets, stretch inserts

65% polyester/35% cotton - 270 g/m<sup>2</sup>

Tested in accordance with EN ISO 15797. When using MASCOT® Waterloo kneepads, the requirements according to EN 14404 are met.

Leg length and size: 76 cm: C 46-C 56 • 82 cm: C 42-C 68 • 90 cm: C 46-C 62

- Many elastic inserts provide unique freedom of movement.
- Low waist with form-cut waistband ensures comfort and freedom of movement.
- Ergonomically shaped trouser legs are constructed to follow the body's natural movements.
- The kneepad pockets of durable CORDURA® are adjustable so the kneepads have the optimal position on your knees.
- As standard in three different leg lengths, so you can choose the best fit and optimal placement of details just for you.





## CORDURA® increases durability

High durability is crucial when you are working at a fast pace. MASCOT ensures durability by using lots of CORDURA® fabric on all the exposed places, such as kneepad pockets, holster pockets and ruler pockets. CORDURA® fabric is in fact seven times stronger than cotton.



010

09



**18531-442 | Trousers with CORDURA® kneepad pockets and holster pockets, stretch inserts**

65% polyester/35% cotton - 270 g/m<sup>2</sup>

*Tested in accordance with EN ISO 15797. When using MASCOT® Waterloo kneepads, the requirements according to EN 14404 are met.*

Leg length and size: 76 cm: C 46-C 56 • 82 cm: C 42-C 68 • 90 cm: C 46-C 62

- Many elastic inserts provide unique freedom of movement.
- Low waist with form-cut waistband ensures comfort and freedom of movement.
- Ergonomically shaped trouser legs are constructed to follow the body's natural movements.
- Holster pockets of durable CORDURA®.
- The kneepad pockets of durable CORDURA® are adjustable so the kneepads have the optimal position on your knees.

# Super lightweight twill fabric

## The lightest trousers in the MASCOT® ACCELERATE range

With a weight in grammes of just 205 g/m<sup>2</sup>, fabric quality 230 is the absolute lightest trouser material in the MASCOT® ACCELERATE range. The material has a high cotton content compared with other trouser materials in the range. Cotton is highly absorbent, and it is also good at leading heat away from the body. This makes the material particularly comfortable against the skin. The polyester in the material adds extra wear resistance, and despite its light weight, the trousers are highly durable. This is thanks to the CORDURA® reinforced panels on the trousers' most exposed areas.



### 18779-230 | Trousers, extra lightweight

50% cotton/50% polyester - 205 g/m<sup>2</sup>

Leg length and size: 82 cm: C 42-C 68 • 90 cm: C 46-C 62

- Particularly suited to warm environments as this is light weight and has a high content of cotton.
- Low waist with form-cut waistband ensures comfort and freedom of movement.
- Ergonomically shaped trouser legs are constructed to follow the body's natural movements.
- Ruler pocket of CORDURA® with extra pockets.
- Extra visibility with the help of reflectors.





 **Lightweight**  
ULTIMATE COMFORT

# Ultra light trousers with cotton

 **Lightweight**  
ULTIMATE COMFORT



010

03

09

18



LIGHTWEIGHT



ERGONOMIC  
FIT



KNEE PAD  
POCKET



REFLECTORS



MAGNET



**CORDURA®**  
F A B R I C

## 18379-230 | Trousers with CORDURA® kneepad pockets, extra lightweight

50% cotton/50% polyester - 205 g/m<sup>2</sup>

When using MASCOT® Waterloo kneepads, the requirements according to EN 14404 are met.

- Leg length and size: 76 cm: C 46-C 56 • 82 cm: C 42-C 68 • 90 cm: C 46-C 62
- Particularly suited to warm environments as this is light weight and has a high content of cotton.
  - Low waist with form-cut waistband ensures comfort and freedom of movement.
  - Ergonomically shaped trouser legs are constructed to follow the body's natural movements.
  - The kneepad pockets of durable CORDURA® are adjustable so the kneepads have the optimal position on your knees.
  - As standard in three different leg lengths, so you can choose the best fit and optimal placement of details just for you.





010



09



18



DIAMOND FIT



PEARL FIT



LIGHTWEIGHT



ERGONOMIC FIT



REFLECTORS



MAGNET



18478-230 | Trousers, ladies fit DIAMOND, extra lightweight

18488-230 | Trousers, ladies fit PEARL, extra lightweight

50% cotton/50% polyester - 205 g/m<sup>2</sup>

Leg length and size: 76 cm: 34-56 • 82 cm: 34-56

- Diamond fit is especially designed for women with a difference of more than 20 centimetres between their waist and hip measurements.
- Pearl fit is especially designed for women with a difference of less than 20 centimetres between their waist and hip measurements.
- Particularly suited to warm environments as this is light weight and has a high content of cotton.
- Low waist with form-cut waistband ensures comfort and freedom of movement.
- Ergonomically shaped trouser legs are constructed to follow the body's natural movements.



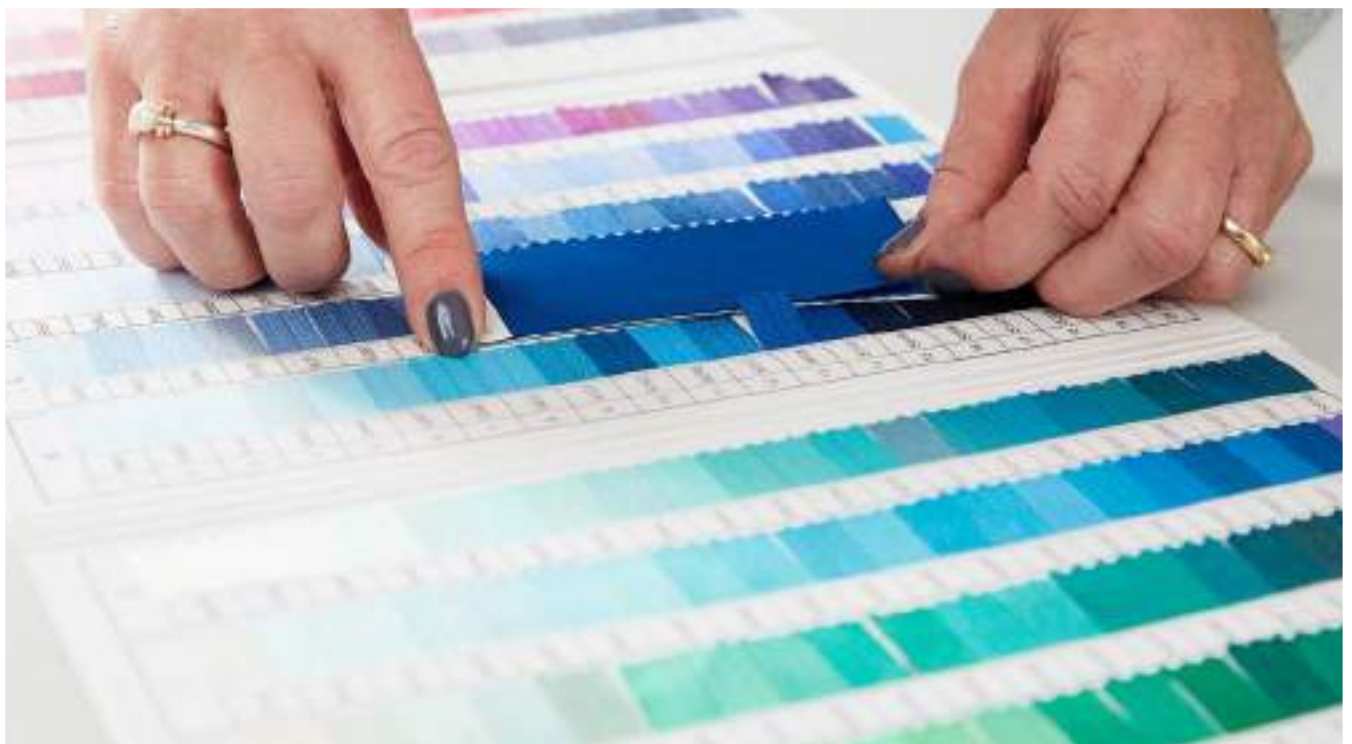
**TESTED TO WORK**





## Behind MASCOT® ACCELERATE — a development process with the highest demands

Market research into new trends and opportunities left MASCOT with a clear mission statement for its new range. MASCOT® ACCELERATE had to be image-conscious. The design line needed to give companies a streamlined, presentable and ultra modern visual identity. The range also had to be so flexibly structured in terms of product combinations and colours that it could come across as having been specifically tailored for multiple target groups and suitable for a wealth of different job functions. And so it was. After many months of development, the final range came out exactly as we wanted it to.



## Tested by users – workwear at work

MASCOT® ACCELERATE has been developed in collaboration with its potential users. Products in the MASCOT® ACCELERATE range were sent out to be tested by users from very early on in the development process.

As soon as the first prototypes were ready, they were sent out and put to work in a range of different industries. In close collaboration with test users, product features were adapted and fine-tuned time and time again.



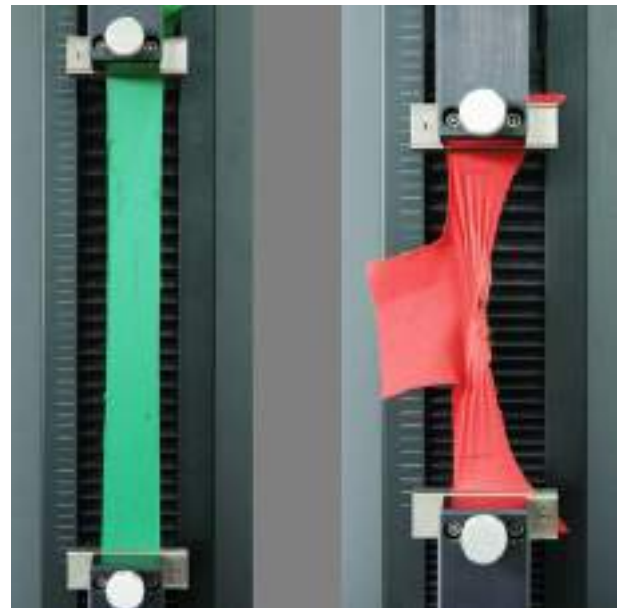








Martindale machines run 24/7. These are used to test the wear resistance and pilling tendencies of our fabrics.







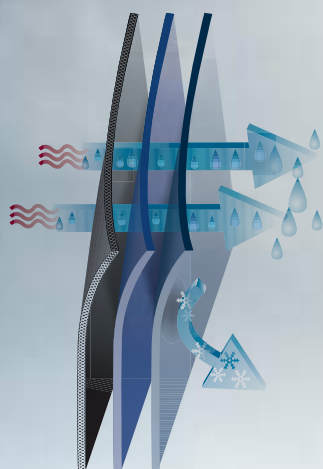
## Tested in our own laboratories

The fabric qualities selected for MASCOT® ACCELERATE have been thoroughly tested in MASCOT's very own test laboratory. One of the things we set out to do with MASCOT® ACCELERATE was to take stretch fabric to a whole new level. We placed a number of very particular demands on our newly developed fabric quality 511. In addition to being flexible and extremely elastic, this fabric quality also needed to withstand industrial washing and tunnel drying. And on top of that, it also needed to be lightweight and extremely wear resistant.



# 5

## MIX tops for all weather conditions



### Moisture wicking:

The clothes that you wear closest to the skin must have a strong ability to absorb moisture, transfer it away from the body and distribute it to a larger area to allow the moisture to evaporate quickly.



### Insulation:

The middle layer should be insulating and breathable. If it is extra cold, you can clothe yourself with several thin insulating layers.



### Weather protection:

The outer layer should be breathable to allow moisture from the body to escape. In addition, it should be windproof and waterproof/water-repellent.





No matter whether you're looking for a moisture-wicking inner layer, an insulating middle layer or a wind and waterproof outer layer, you'll find what you are after in MASCOT® ACCELERATE. By layering up in different combinations you are guaranteed optimal protection in all weather conditions.



See page 90



See page 108

# T-shirts



## 18382-959 | T-Shirt, modern fit

60% cotton/40% polyester - 195 g/m<sup>2</sup>

Tested in accordance with EN ISO 15797.

Size: XS-4XL

- Combed cotton absorbs moisture and is extra comfortable against the skin.
- Modern, close fit with great freedom of movement.
- Extra padding over the seam at the neck so the seam does not cause irritation.
- Good space for placement of company logo.



## 18392-959 | T-Shirt, ladies fit

60% cotton/40% polyester - 195 g/m<sup>2</sup>

Tested in accordance with EN ISO 15797.

Size: XS-3XL

- Specially designed and fitted for women.
- Combed cotton absorbs moisture and is extra comfortable against the skin.
- Extra padding over the seam at the neck so the seam does not cause irritation.
- Good space for placement of company logo.



PREMIUM



## 18082-250 | T-shirt, modern fit

100% cotton - 195 g/m<sup>2</sup> (Colour 1809, 33303, 91010: 90% cotton/10% viscose.)

Size: XS-4XL

- Combed cotton absorbs moisture and is extra comfortable against the skin.
- Modern, close fit with great freedom of movement.
- Extra padding over the seam at the neck so the seam does not cause irritation.
- Good space for placement of company logo.



PREMIUM



## 18092-801 | T-shirt, ladies fit, moisture wicking COOLMAX® PRO, V-neck

55% polyester (COOLMAX® PRO)/45% polyester - 150 g/m<sup>2</sup>

Size: XS-3XL

- COOLMAX® ensures efficient moisture wicking, keeps the body dry and prevents chilling.
- Specially designed and fitted for women.
- Perfect as a base layer.









**COOLMAX®**  
PRO

## Quick drying and extremely moisture-wicking

COOLMAX® is the market leader with regard to moisture dispersion. Use MASCOT COOLMAX® garments when choosing clothing that is worn close to the skin, i.e. underwear and socks. COOLMAX® quickly transports moisture away from the skin and disperses it through the fabric where it can evaporate quickly. With the help of COOLMAX®, your skin never feels damp and you avoid any undesirable cooling of the body. Products containing COOLMAX® are soft, easy to wash and quick-drying.



01091

1809

20209

33303

91010



18083-801 | Polo shirt, moisture wicking COOLMAX® PRO, modern fit

55% polyester (COOLMAX® PRO)/45% polyester - 150 g/m²

Size: XS-4XL

- COOLMAX® ensures efficient moisture wicking, keeps the body dry and prevents chilling.
- Modern, close fit with great freedom of movement.
- Buttoned placket.
- Extra padding over the seam at the neck so the seam does not cause irritation.
- Perfect as a base layer.



# Polo shirts



## 18393-961 | Polo Shirt, ladies fit

60% cotton/40% polyester - 210 g/m²

Tested in accordance with EN ISO 15797.

Size: XS-3XL

- Specially designed and fitted for women.
- Ribbed collar.
- Buttoned placket.
- Extra padding over the seam at the neck so the seam does not cause irritation.
- Good space for placement of company logo.



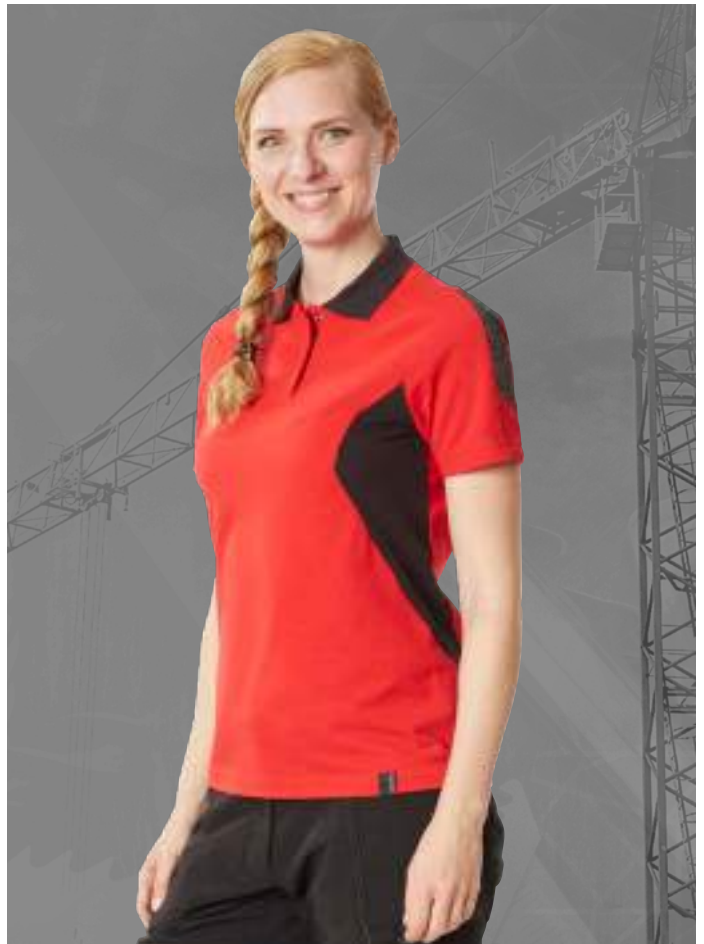
## 18383-961 | Polo shirt, modern fit

60% cotton/40% polyester - 210 g/m²

Tested in accordance with EN ISO 15797.

Size: XS-4XL

- Modern, close fit with great freedom of movement.
- Ribbed collar.
- Buttoned placket.
- Extra padding over the seam at the neck so the seam does not cause irritation.
- Good space for placement of company logo.











# Corporate Identity

– promote your business  
with your company name  
and logo



**MASCOT®**  
WORKWEAR

**Audi Sport**  
Official Supplier



# Long-sleeved T-shirts



01091 1809 20209 33303 91010



18381-959 | T-shirt, long-sleeved, modern fit

60% cotton/40% polyester - 195 g/m<sup>2</sup>

Tested in accordance with EN ISO 15797.

Size: XS-4XL

- Modern, close fit with great freedom of movement.
- Combed cotton absorbs moisture and is extra comfortable against the skin.
- Extra padding over the seam at the neck so the seam does not cause irritation.
- Good space for placement of company logo.



01091 1809 20209 33303 91010



18391-959 | T-shirt, long-sleeved, ladies fit

60% cotton/40% polyester - 195 g/m<sup>2</sup>

Tested in accordance with EN ISO 15797.

Size: XS-3XL

- Specially designed and fitted for women.
- Combed cotton absorbs moisture and is extra comfortable against the skin.
- Extra padding over the seam at the neck so the seam does not cause irritation.
- Good space for placement of company logo.





**18081-810 | Polo shirt, moisture wicking COOLMAX® PRO, long-sleeved, modern fit**

55% polyester (COOLMAX® PRO)/45% polyester - 230 g/m²

Size: XS-4XL

- COOLMAX® ensures efficient moisture wicking, keeps the body dry and prevents chilling.
- Modern, close fit with great freedom of movement.
- Buttoned placket.
- Extra padding over the seam at the neck so the seam does not cause irritation.
- Perfect as a base layer.



**18091-810 | T-shirt, ladies fit, moisture wicking COOLMAX®PRO, long-sleeved and V-neck**

55% polyester (COOLMAX® PRO)/45% polyester - 230 g/m²

Size: XS-3XL

- COOLMAX® ensures efficient moisture wicking, keeps the body dry and prevents chilling.
- Specially designed and fitted for women.
- Perfect as a base layer.

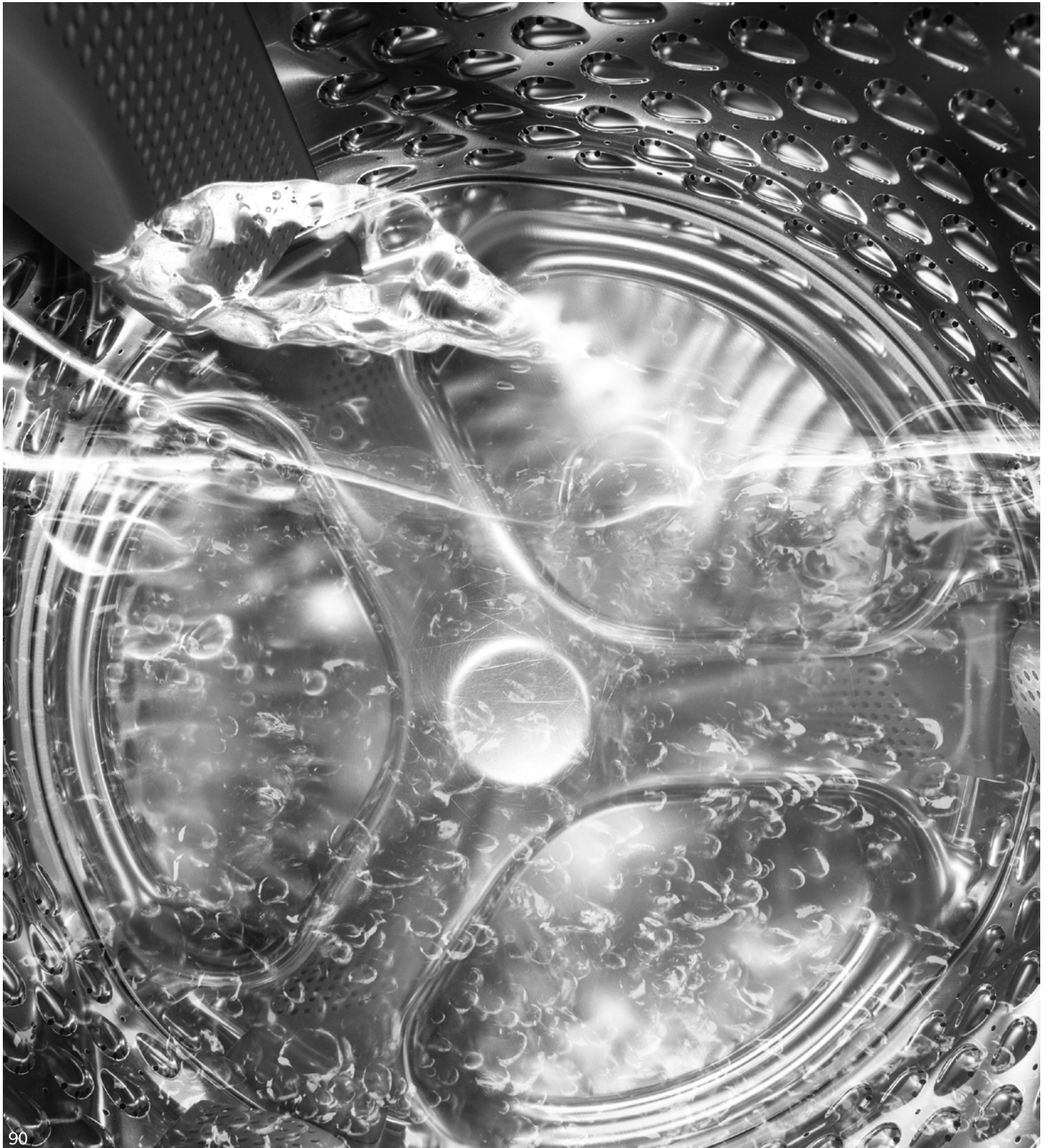
# ProWash®

---

EN ISO 15797

---

Tops with ProWash® can withstand industrial washing at up to 75 degrees followed by industrial drying. ProWash® products are long-lasting and made from materials of the highest quality.







# Hoodie



01091

1809

20209

33303

91010



MODERN FIT



18584-962 | Hoodie with zipper, modern fit

60% cotton/40% polyester - 310 g/m<sup>2</sup>

Tested in accordance with EN ISO 15797.

Size: XS-4XL

- Modern, close fit with great freedom of movement.
- Brushed inside making it warm and soft to wear.
- Zip right through.
- Extra padding over the seam at the neck so the seam does not cause irritation.



## Sweatshirts



01091

1809

20209

33303

91010



MODERN FIT



### 18384-962 | Sweatshirt, modern fit

60% cotton/40% polyester - 310 g/m<sup>2</sup>

Tested in accordance with EN ISO 15797.

Size: XS-4XL

- Modern, close fit with great freedom of movement.
- Brushed inside making it warm and soft to wear.
- Extra padding over the seam at the neck so the seam does not cause irritation.
- Ribbed collar and sleeves.



01091

1809

20209

33303

91010



LADIES FIT



### 18394-962 | Sweatshirt, ladies fit

60% cotton/40% polyester - 310 g/m<sup>2</sup>

Tested in accordance with EN ISO 15797.

Size: XS-3XL

- Specially designed and fitted for women.
- Brushed inside making it warm and soft to wear.
- Extra padding over the seam at the neck so the seam does not cause irritation.
- Ribbed collar and sleeves.





#### 18484-962 | Sweatshirt with zipper, modern fit

60% cotton/40% polyester - 310 g/m<sup>2</sup>

Tested in accordance with EN ISO 15797.

Size: XS-4XL

- Modern, close fit with great freedom of movement.
- Brushed inside making it warm and soft to wear.
- Zip right through.
- Ribbed collar and sleeves.
- Extra padding over the seam at the neck so the seam does not cause irritation.



#### 18494-962 | Sweatshirt with zipper, ladies fit

60% cotton/40% polyester - 310 g/m<sup>2</sup>

Tested in accordance with EN ISO 15797.

Size: XS-3XL

- Specially designed and fitted for women.
- Brushed inside making it warm and soft to wear.
- Zip right through.
- Ribbed collar and sleeves.
- Extra padding over the seam at the neck so the seam does not cause irritation.

Mix and match more than 500  
different products across MASCOT's  
other ranges





Find more products in matching colours, other product types, safety footwear and accessories.









# Fleeces for every working situation



## 18003-316 | Fleece Jumper with half zip, modern fit

94% polyester/6% elastane - 260 g/m<sup>2</sup>

Size: XS-4XL

- The smooth surface of the fleece material prevents dust and dirt from sticking.
- Modern, close fit with great freedom of movement.
- Flexible and close-fitting high collar.
- Elastic at cuffs and waist.
- Chest pocket with zip fastening.



## 18053-316 | Fleece Jumper with half zip, ladies fit

94% polyester/6% elastane - 260 g/m<sup>2</sup>

Size: XS-3XL

- The smooth surface of the fleece material prevents dust and dirt from sticking.
- Specially designed and fitted for women.
- Flexible and close-fitting high collar.
- Fastening with zip and internal storm flap, so the wind is kept out.
- Elastic at cuffs and waist.



## 18103-316 | Fleece Jumper with zipper, modern fit

94% polyester/6% elastane - 260 g/m<sup>2</sup>

Size: XS-4XL

- The smooth surface of the fleece material prevents dust and dirt from sticking.
- Modern, close fit with great freedom of movement.
- Flexible and close-fitting high collar.
- Fastening with zip and internal storm flap, so the wind is kept out.
- Elastic at cuffs and waist.



## 18153-316 | Fleece Jumper with zipper, ladies fit

94% polyester/6% elastane - 260 g/m<sup>2</sup>

Size: XS-3XL

- The smooth surface of the fleece material prevents dust and dirt from sticking.
- Specially designed and fitted for women.
- Flexible and close-fitting high collar.
- Fastening with zip and internal storm flap, so the wind is kept out.
- Elastic at cuffs and waist.



# Knitted jumpers and fleece jackets



## 18155-951 | Knitted Jumper with zipper, ladies fit

100% polyester - 300 g/m<sup>2</sup>

Size: XS-3XL

- Specially designed and fitted for women.
- Fastening with zip and internal storm flap, so the wind is kept out.
- Elastic at cuffs and waist.
- Front pockets with zip fastening.
- Extra visibility with the help of reflectors.





### 18303-137 | Fleece Jacket with zipper, modern fit

100% polyester - 270 g/m<sup>2</sup>

Size: XS-4XL

- Modern, close fit with great freedom of movement.
- Fastening with zip and internal storm flap, so the wind is kept out.
- Flexible and close-fitting high collar.
- Elastic at the cuffs.
- Extra visibility with the help of reflectors.



### 18105-951 | Knitted Jumper with zipper, modern fit

100% polyester - 300 g/m<sup>2</sup>

Size: XS-4XL

- Modern, close fit with great freedom of movement.
- Fastening with zip and internal storm flap, so the wind is kept out.
- Chest pocket with zip fastening.
- Elastic at cuffs and waist.
- Extra visibility with the help of reflectors.



# Light jackets





## Detachable ID card holder

The jacket's front pocket has a detachable ID card holder. The ID card holder can be easily attached or removed using a press stud.



### 18101-511 | Jacket, four-way stretch, lightweight

92% polyester/8% elastolefin - 260 g/m<sup>2</sup>

Tested in accordance with EN ISO 15797.

Size: XS-4XL

- Four way stretch material provides unique freedom of movement and comfort.
- The water-repellent multifunctional stretch material combines a low weight with a very high durability.
- The stretch material can be industrial laundered according to EN ISO 15797.
- Fastening with zip and internal storm flap, so the wind is kept out.
- Ergonomically shaped sleeves are designed to follow the arms' natural movements.



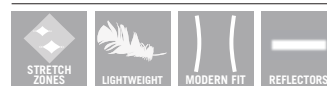
### 18008-511 | Jacket, ladies fit, four-way stretch, lightweight

92% polyester/8% elastolefin - 260 g/m<sup>2</sup>

Tested in accordance with EN ISO 15797.

Size: XS-3XL

- Specially designed and fitted for women.
- Four way stretch material provides unique freedom of movement and comfort.
- The water-repellent multifunctional stretch material combines a low weight with a very high durability.
- The stretch material can be industrial laundered according to EN ISO 15797.
- Fastening with zip and internal storm flap, so the wind is kept out.



### 18509-442 | Jacket, stretch inserts

65% polyester/35% cotton - 270 g/m<sup>2</sup>

Tested in accordance with EN ISO 15797.

Size: XS-4XL

- Modern, close fit with great freedom of movement.
- Many elastic inserts provide unique freedom of movement.
- Fastening with zip and internal storm flap, so the wind is kept out.
- Extra visibility with the help of reflectors.



# Insulating and lightweight gilets for men and women



**CLIMASCOT®**  
Lightweight Insulation

**18065-318 | Winter Gilet with CLIMASCOT®-lining, water-repellent, lightweight**

100% polyester - 260 g/m<sup>2</sup>

Size: XS-4XL

- Unique CLIMASCOT® insulation provides warmth without bulk. Lightweight, soft CLIMASCOT® insulation takes up almost no space when compressed.
- Water-repellent.
- Stretch fabric at the sides provides extra freedom of movement.
- Elastic in the arm hole keeps warmth from escaping.
- Extra visibility with the help of reflectors.



**CLIMASCOT®**  
Lightweight Insulation

**18075-318 | Winter Gilet with CLIMASCOT®-lining, ladies fit, water-repellent**

100% polyester - 260 g/m<sup>2</sup>

Size: XS-3XL

- Specially designed and fitted for women.
- Unique CLIMASCOT® insulation provides warmth without bulk. Lightweight, soft CLIMASCOT® insulation takes up almost no space when compressed.
- Water-repellent.
- Stretch fabric at the sides provides extra freedom of movement.
- Elastic in the arm hole keeps warmth from escaping.





OEKO-TEX®  
CONFIDENCE IN TEXTILES  
**STANDARD 100**  
5548 Shirley  
Tested for harmful substances.  
www.oeko-tex.com/standard100

ProWash®  
EN ISO 15797

OEKO-TEX®  
CONFIDENCE IN TEXTILES  
**STANDARD 100**  
5548 Shirley  
Tested for harmful substances.  
www.oeko-tex.com/standard100

ProWash®  
EN ISO 15797

#### 18365-511 | Gilet, four-way stretch, lightweight

92% polyester/8% elastolefin - 260 g/m²

Tested in accordance with EN ISO 15797.

Size: XS-4XL

- Four way stretch material provides unique freedom of movement and comfort.
- The water-repellent multifunctional stretch material combines a low weight with a very high durability.
- The stretch material can be industrial laundered according to EN ISO 15797.
- Fastening with zip and internal storm flap, so the wind is kept out.
- Extra visibility with the help of reflectors.

#### 18375-511 | Gilet, ladies fit, four-way stretch, lightweight

92% polyester/8% elastolefin - 260 g/m²

Tested in accordance with EN ISO 15797.

Size: XS-3XL

- Specially designed and fitted for women.
- Four way stretch material provides unique freedom of movement and comfort.
- The stretch material can be industrial laundered according to EN ISO 15797.
- The water-repellent multifunctional stretch material combines a low weight with a very high durability.
- Fastening with zip and internal storm flap, so the wind is kept out.









# Dynamism. Speed. Movement.

Incorporating the dynamism and movement of motorsports.



The use of lines in the design has been inspired by the contours and shapes that create speed and dynamism in the Audi Sports cars. This gives the range a sporty, active and streamlined appearance. Lines in motion all the way round the body.

# Jacket with CLIMASCOT® lining



## CLIMASCOT®

Lightweight Insulation

### Innovative lining

The thermal jacket's lining is of the brand CLIMASCOT® Lightweight Insulation. Besides having a high insulating power, CLIMASCOT® is a breathable lightweight material that takes up very little room when compressed. The environment has also been considered with CLIMASCOT®, as it is partially made from recycled materials.



**CLIMASCOT®**  
Lightweight Insulation

18015-318 | Jacket with CLIMASCOT®-lining, water-repellent, lightweight

100% polyester - 260 g/m<sup>2</sup>

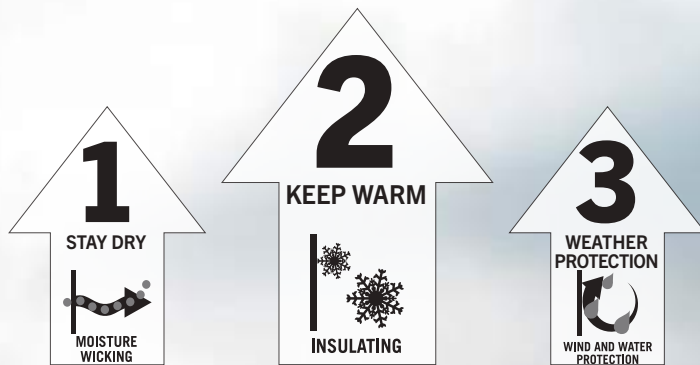
Size: XS-4XL

- Unique CLIMASCOT® insulation provides warmth without bulk. Lightweight, soft CLIMASCOT® insulation takes up almost no space when compressed.
- With its low density and unique composition, the product works exceptionally well as an insulating middle layer.
- Water-repellent.
- Stretch fabric at the sides provides extra freedom of movement.
- Extra visibility with the help of reflectors.



# How many layers do you need in your job?

During the Spring and the Autumn, two layers are often sufficient – a moisture-wicking inner layer and an insulating outer layer. This thermal jacket with CLIMASCOT® lining is the perfect choice for a light and soft mild weather jacket – your insulating second layer. And when the weather turns really cold, the thermal jacket works well as an insulating middle layer thanks to the low density and unique composition of its lining.



**CLIMASCOT®**  
Lightweight Insulation

**18025-318 | Jacket with CLIMASCOT®-lining, ladies fit, water-repellent**

100% polyester - 260 g/m²

Size: XS-3XL

- Specially designed and fitted for women.
- Unique CLIMASCOT® insulation provides warmth without bulk. Lightweight, soft CLIMASCOT® insulation takes up almost no space when compressed.
- With its low density and unique composition, the product works exceptionally well as an insulating middle layer.
- Water-repellent.
- Stretch fabric at the sides provides extra freedom of movement.





Certified breathable  
and waterproof  
workwear







When working regardless of the weather, it is important to be properly dressed. Look for the EN 343-certification if you want to ensure comfort regardless of rain and wind. The first number indicates the water tightness and the second number refers to the breathability of the overall product. Both scale values run from 1-3, where 3 indicates the highest class.

# A jacket for all seasons — shell jackets in different fabrics



## 18001-249 | Outer Shell Jacket, windproof and water-repellent, lightweight

100% polyester - 115 g/m<sup>2</sup>

Size: XS-4XL

- Windproof and water-repellent.
- Detachable lined hood with adjustable elastic drawstring.
- Fastening with zip and internal storm flap, so the wind is kept out.
- Ribbed inner waistband to keep the cold out.
- Elastic adjustment at the waist.



## 18011-249 | Outer Shell Jacket, ladies fit, windproof and water-repellent

100% polyester - 115 g/m<sup>2</sup>

Size: XS-3XL

- Specially designed and fitted for women.
- Windproof and water-repellent.
- Detachable lined hood with adjustable elastic drawstring.
- Fastening with zip and internal storm flap, so the wind is kept out.
- Elastic adjustment at the waist.





### 18301-231 | Outer Shell Jacket, breathable, wind and waterproof

100% polyester - 210 g/m<sup>2</sup>

Certified to EN 343 - class 3/3.

Size: XS-4XL

- Breathable, wind and waterproof with taped seams.
- Fastening with zip and internal storm flap, so the wind is kept out.
- Detachable lined hood with adjustable elastic drawstring.
- Sleeves with reinforcement of CORDURA®.
- Ribbed inner waistband to keep the cold out.



## Adjustable jacket

The detachable hood and the bottom trim can be adjusted through the use of elastic drawstrings. This feature provides excellent protection against the wind and cold. The elastic drawstrings can also be concealed to prevent them from getting in the way. The sleeves have an inner ribbing by the wrists with a thumb hole, allowing the jacket to cover the entire back of the hand.



### 18311-231 | Outer Shell Jacket, ladies fit, breathable, wind and waterproof

100% polyester - 210 g/m<sup>2</sup>

Certified to EN 343 - class 3/3.

Size: XS-3XL

- Specially designed and fitted for women.
- Breathable, wind and waterproof with taped seams.
- Detachable lined hood with adjustable elastic drawstring.
- Fastening with zip and internal storm flap, so the wind is kept out.
- Sleeves with reinforcement of CORDURA®.

You can find all eight products containing CLIMASCOT® in the MASCOT® ACCELERATE range. See the jackets on page 114 and the vests on page 102.





# CLIMASCOT®

Lightweight Insulation



RECYCLED CONTENT



## Stay warm with CLIMASCOT® lining

Benefit from a lining of the brand CLIMASCOT® Lightweight Insulation. Besides having a high insulating power, CLIMASCOT® gives you a breathable lightweight material that takes up very little room when compressed. The environment has also been considered with CLIMASCOT®, as it is partially made from recycled materials.



# Warm winter jackets for all industries



**18035-249 | Winter Jacket with CLIMASCOT®-lining, windproof and water-repellent**

100% polyester - 115 g/m<sup>2</sup>

Certified to EN 342:2017 - class 3/WP (2,154 clo).

Size: XS-4XL

- Windproof and water-repellent.
- Unique CLIMASCOT® insulation provides warmth without bulk. Lightweight, soft CLIMASCOT® insulation takes up almost no space when compressed.
- Detachable lined hood with adjustable elastic drawstring.
- Fastening with zip and internal storm flap, so the wind is kept out.
- Interior zipper at lower back for logo printing / embroidery.



**18045-249 | Winter Jacket with CLIMASCOT®-lining, ladies fit, windproof and water-repellent**

100% polyester - 115 g/m<sup>2</sup>

Certified to EN 342:2017 - class 3/WP (2,038 clo).

Size: XS-3XL

- Specially designed and fitted for women.
- Windproof and water-repellent.
- Unique CLIMASCOT® insulation provides warmth without bulk. Lightweight, soft CLIMASCOT® insulation takes up almost no space when compressed.
- Detachable lined hood with adjustable elastic drawstring.
- Fastening with zip and internal storm flap, so the wind is kept out.





## Protection against the cold and rain

When the cold and rain become a real challenge, it's worth wearing clothes that give you optimal protection against the elements. Look for winter clothing with the cold standard EN 342 and the rain standard EN 343.



**CLIMASCOT®** **CORDURA®**  
Lightweight Insulation F A B R I C



### 18335-231 | Winter Jacket with CLIMASCOT®-lining, breathable, wind- and waterproof

100% polyester - 210 g/m<sup>2</sup>

Certified to EN 342:2017 - class 3/WP (2,258 clo) and EN 343 - class 3/1.

Size: XS-4XL

- Breathable, wind and waterproof with taped seams.
- Unique CLIMASCOT® insulation provides warmth without bulk. Lightweight, soft CLIMASCOT® insulation takes up almost no space when compressed.
- Detachable lined hood with adjustable elastic drawstring.
- Fastening with zip and internal storm flap, so the wind is kept out.
- Sleeves with reinforcement of CORDURA®.



**CLIMASCOT®** **CORDURA®**  
Lightweight Insulation F A B R I C



### 18345-231 | Winter Jacket with CLIMASCOT®-lining, ladies fit, breathable, wind- and waterproof

100% polyester - 210 g/m<sup>2</sup>

Certified to EN 342:2017 - class 3/WP (2,103 clo) and EN 343 - class 3/1.

Size: XS-3XL


- Specially designed and fitted for women.
- Breathable, wind and waterproof with taped seams.
- Unique CLIMASCOT® insulation provides warmth without bulk. Lightweight, soft CLIMASCOT® insulation takes up almost no space when compressed.
- Detachable lined hood with adjustable elastic drawstring.
- Fastening with zip and internal storm flap, so the wind is kept out.



6

ProWash®  
EN ISO 15797





## Products developed for industrial washing

A number of products in the MASCOT® ACCELERATE range have been developed with industrial washing in mind. All accessory materials in these products have therefore also been chosen based on their ability to withstand repeated industrial wash cycles, including tunnel drying.

Look for the ProWash® symbol to find products tested in accordance with EN ISO 15797.

18382-959-91010  
T-Shirt, modern fit



18392-959-91010  
T-Shirt, ladies fit



18383-961-91010  
Polo shirt, modern fit



18393-961-91010  
Polo Shirt, ladies fit



18484-962-91010  
Sweatshirt with zipper, modern fit



18494-962-91010  
Sweatshirt with zipper, ladies fit



18584-962-91010  
Hoodie with zipper, modern fit



18365-511-91010  
Gilet, four-way stretch, lightweight



18079-511-010  
Trousers with CORDURA® kneepad pockets, four-way stretch, lightweight



18179-511-010  
Trousers with CORDURA® kneepad pockets, four-way stretch, lightweight



18078-511-010 DIAMOND  
18088-511-010 PEARL  
Trousers with CORDURA® kneepad pockets, ladies fit, four-way stretch, lightweight



18279-511-010  
Trousers with thigh pockets, four-way-stretch, lightweight



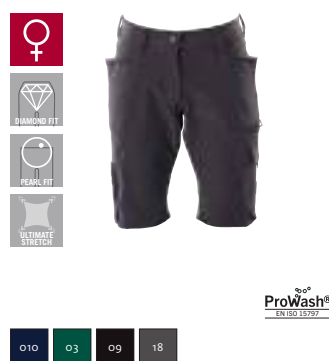
18569-442-010  
Bib & Brace with CORDURA® kneepad pockets, stretch inserts



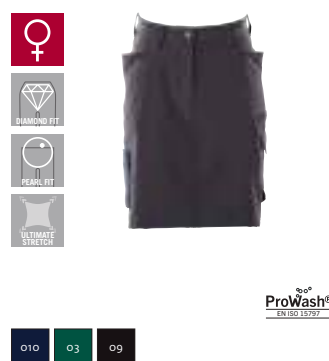
18149-511-010  
Shorts, four-way stretch, lightweight



18048-511-010 DIAMOND  
18044-511-010 PEARL  
Shorts, ladies fit, four-way stretch, lightweight



18147-511-010 DIAMOND  
18347-511-010 PEARL  
Skirt, ladies fit, four-way stretch, lightweight





18381-959-91010  
T-shirt, long-sleeved, modern fit



18391-959-91010  
T-shirt, long-sleeved, ladies fit



18384-962-91010  
Sweatshirt, modern fit



18394-962-91010  
Sweatshirt, ladies fit



18375-511-91010  
Gilet, ladies fit, four-way stretch, lightweight



18101-511-91010  
Jacket, four-way stretch, lightweight



18008-511-91010  
Jacket, ladies fit, four-way stretch, lightweight



18509-442-91010  
Jacket, stretch inserts



18178-511-010 DIAMOND  
18188-511-010 PEARL  
Trousers with thigh pockets, ladies fit, four-way stretch, lightweight



18679-442-010  
Trousers with thigh pockets, stretch inserts



18579-442-010  
Trousers with CORDURA® kneepad pockets, stretch inserts



18531-442-010  
Trousers with CORDURA® kneepad pockets and holster pockets, stretch inserts



18047-511-010 DIAMOND  
18247-511-010 PEARL  
Skirt, ladies fit, four-way stretch, lightweight

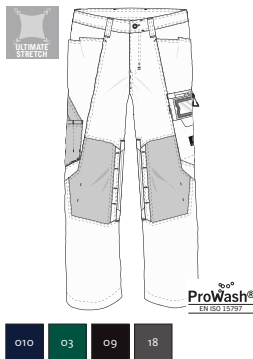


ProWash®  
EN ISO 15797

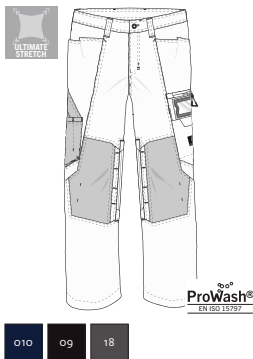
# All products gathered in one place

100% stretch,  
for industrial  
washing

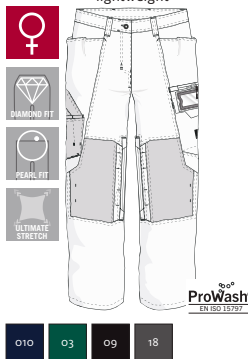
**18079-511**  
Trousers with CORDURA® kneepad pockets, four-way stretch, lightweight



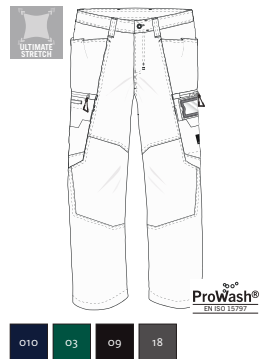
**18179-511**  
Trousers with CORDURA® kneepad pockets, four-way stretch, lightweight



**18078-511 DIAMOND**  
**18088-511 PEARL**  
Trousers with CORDURA® kneepad pockets, ladies fit, four-way stretch, lightweight

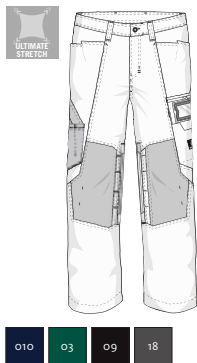


**18279-511**  
Trousers with thigh pockets, four-way stretch, lightweight

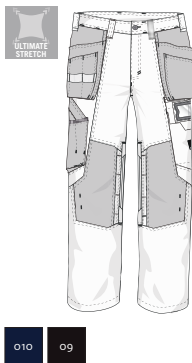


100% stretch

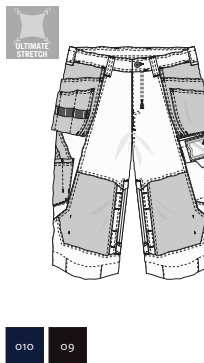
**18479-311**  
Trousers with CORDURA® kneepad pockets, four-way stretch, lightweight



**18031-311**  
Trousers with CORDURA® kneepad and holster pockets, four-way stretch, lightweight

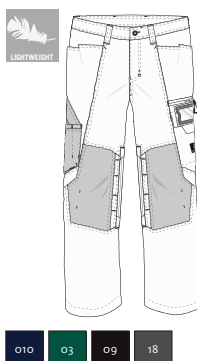


**18249-311**  
¾ Length Trousers with kneepad and holster pockets, four-way stretch, lightweight

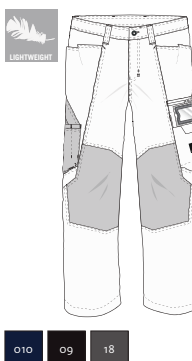


Super  
lightweight  
twill fabric

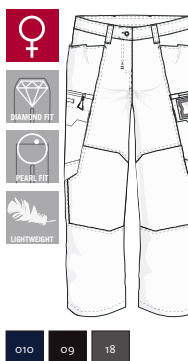
**18379-230**  
Trousers with CORDURA® kneepad pockets, extra lightweight



**18779-230**  
Trousers, extra lightweight

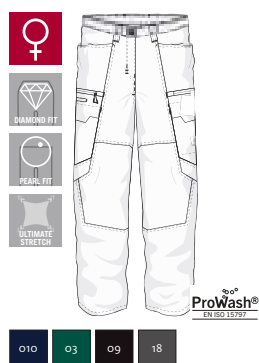


**18478-230 DIAMOND**  
**18488-230 PEARL**  
Trousers, ladies fit, extra lightweight





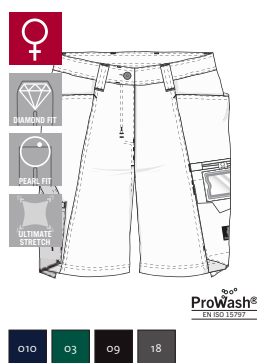
18178-511 DIAMOND  
18188-511 PEARL  
Trousers with thigh pockets, ladies fit,  
four-way-stretch, lightweight



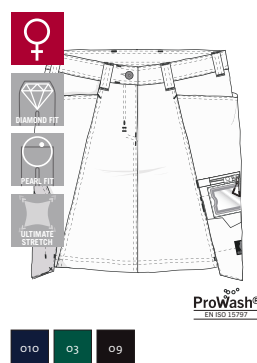
18149-511  
Shorts, four-way stretch, lightweight



18048-511 DIAMOND  
18044-511 PEARL  
Shorts, ladies fit, four-way stretch,  
lightweight



18047-511 DIAMOND  
18247-511 PEARL  
Skirt, ladies fit, four-way stretch,  
lightweight

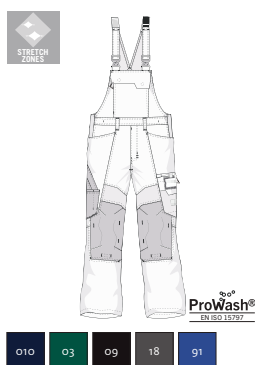


18147-511 DIAMOND  
18347-511 PEARL  
Skirt, ladies fit, four-way stretch,  
lightweight

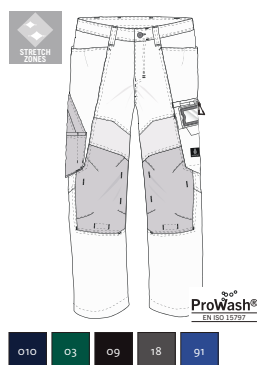


Lightweight  
twill with  
stretch zones

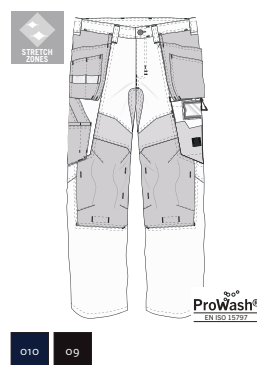
18569-442  
Bib & Brace with CORDURA® kneepad  
pockets, stretch inserts



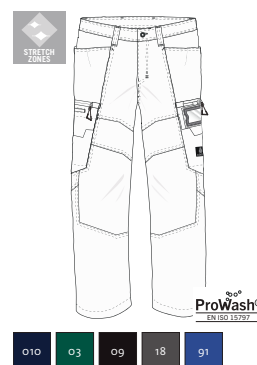
18579-442  
Trousers with CORDURA® kneepad  
pockets, stretch inserts



18531-442  
Trousers with CORDURA® kneepad  
pockets and holster pockets, stretch  
inserts



18679-442  
Trousers with thigh pockets, stretch  
inserts



18082-250  
T-shirt, modern fit



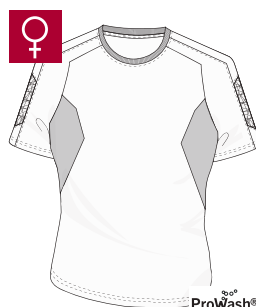
18092-801  
T-shirt, ladies fit, moisture wicking  
COOLMAX® PRO, V-neck



18382-959  
T-Shirt, modern fit



18392-959  
T-Shirt, ladies fit



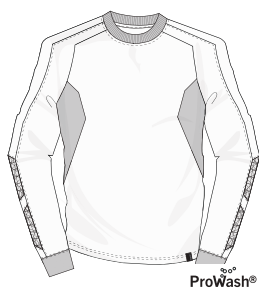
18083-801  
Polo shirt, moisture wicking  
COOLMAX® PRO, modern fit



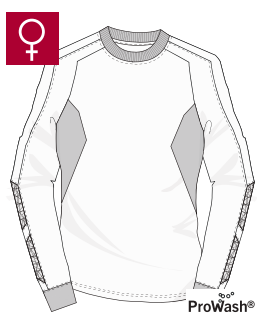
18081-810  
Polo shirt, moisture wicking  
COOLMAX® PRO, long-sleeved,  
modern fit



18384-962  
Sweatshirt, modern fit



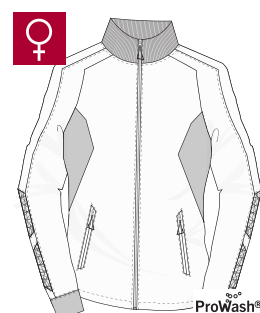
18394-962  
Sweatshirt, ladies fit



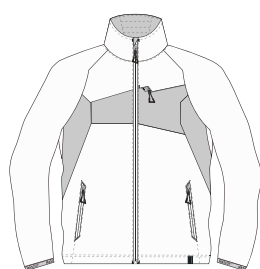
18484-962  
Sweatshirt with zipper, modern fit



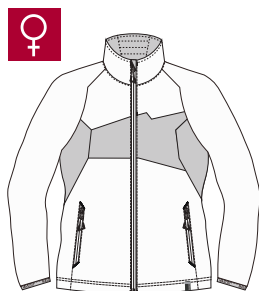
18494-962  
Sweatshirt with zipper, ladies fit



18105-951  
Knitted Jumper with zipper, modern fit



18155-951  
Knitted Jumper with zipper, ladies fit



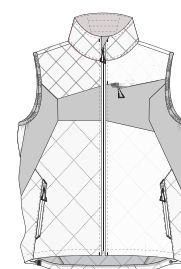
18365-511  
Gilet, four-way stretch, lightweight



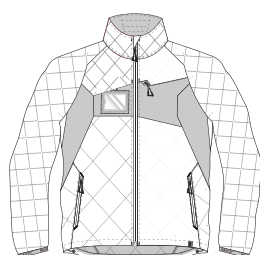
18375-511  
Gilet, ladies fit, four-way stretch,  
lightweight



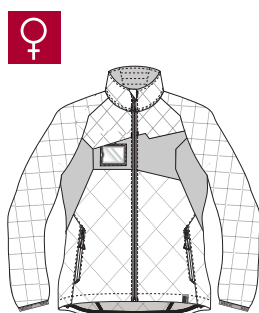
18065-318  
Winter Gilet with CLIMASCOT®-lining,  
water-repellent, lightweight



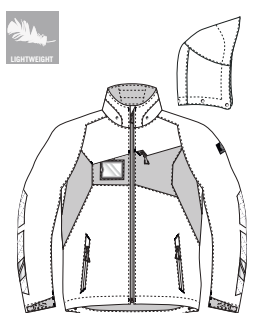
18015-318  
Jacket with CLIMASCOT®-lining, water-  
repellent, lightweight



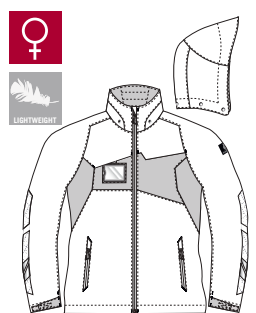
18025-318  
Jacket with CLIMASCOT®-lining, ladies  
fit, water-repellent



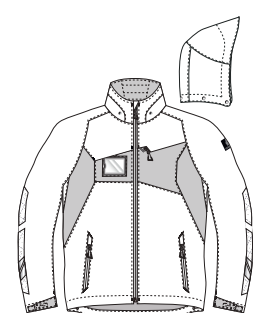
18001-249  
Outer Shell Jacket, windproof and  
water-repellent, lightweight



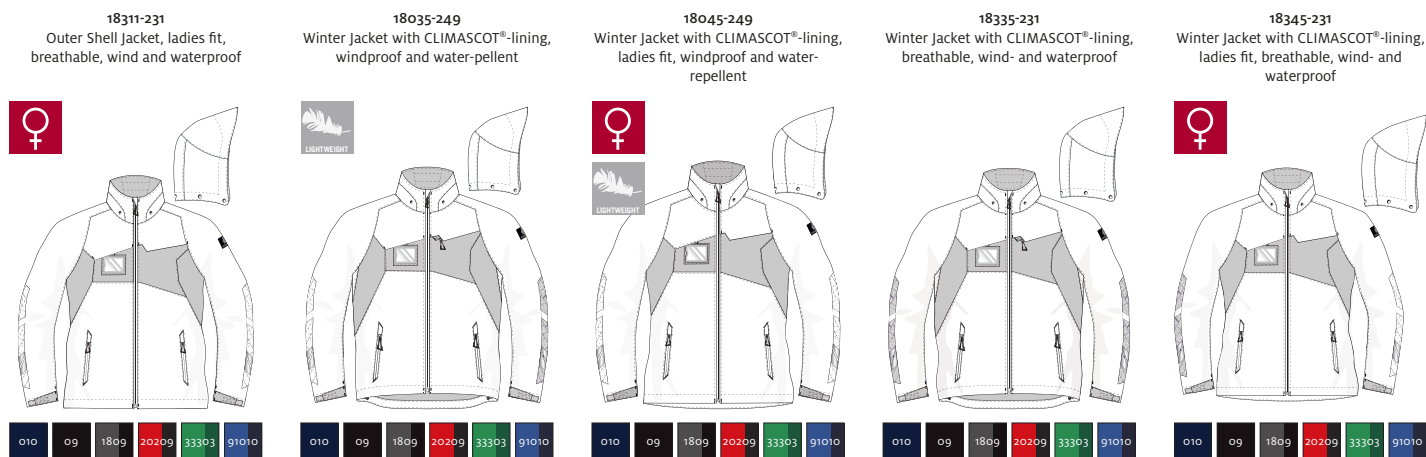
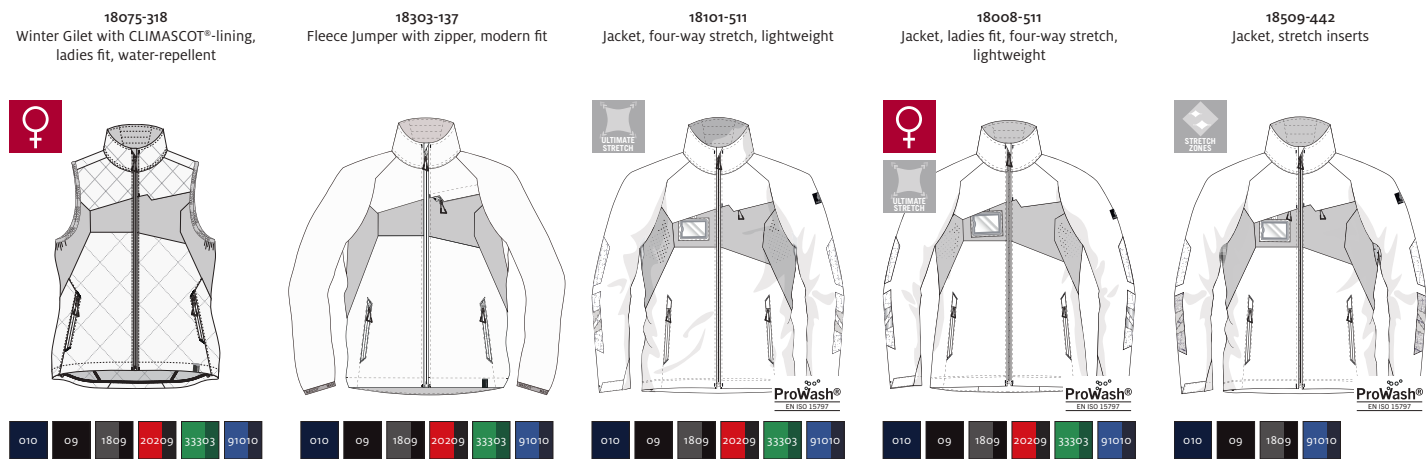
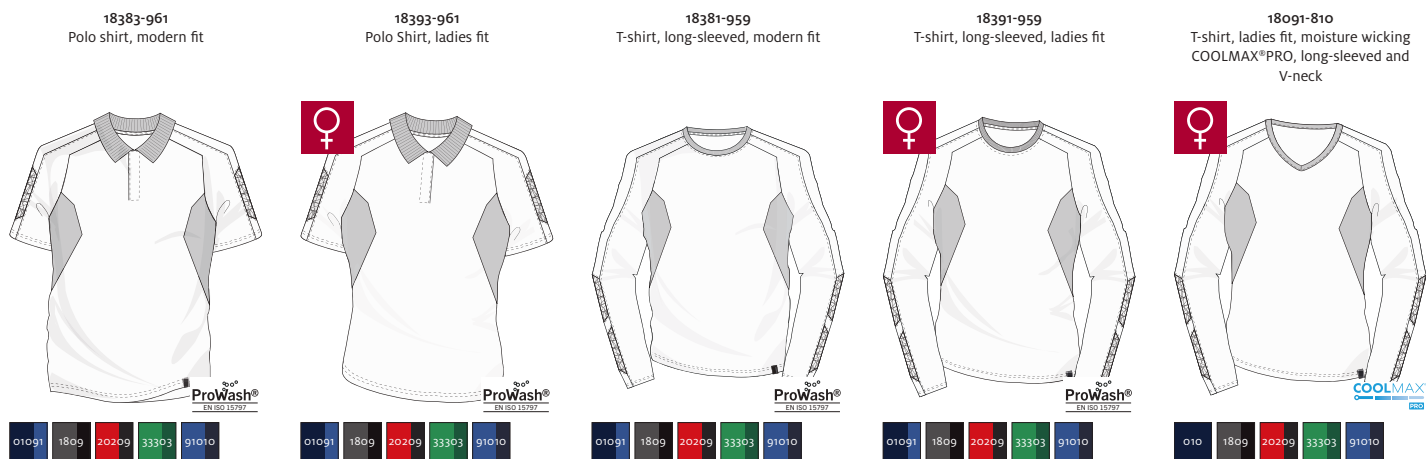
18011-249  
Outer Shell Jacket, ladies fit, windproof  
and water-repellent



18301-231  
Outer Shell Jacket, breathable, wind  
and waterproof













# 8

## MATCH Mum and Dad

### Garments for children who want to match Mum and Dad

Wear-resistant clothing made for movement – for children aged 3–14 years. A complete range of clothing from inner layers to outer layers. Mix and match to create awesome outfits and give the kids a chance to look just like mum or dad.





# Smart T-shirts with prints for children







o8



#### 18982-965 | T-shirt for children, with print

100% cotton - 175 g/m<sup>2</sup>

Size: 3 - 14 age

- A 100% cotton fabric that absorbs moisture and is comfortable against the skin.
- Extra padding over the seam at the neck so the seam does not cause irritation.



o6



#### 18992-965 | T-shirt for children, with print

100% cotton - 175 g/m<sup>2</sup>

Size: 3 - 14 age

- A 100% cotton fabric that absorbs moisture and is comfortable against the skin.
- Extra padding over the seam at the neck so the seam does not cause irritation.



o9

20209

33303

91010



#### 18901-249 | Outer Shell Jacket for children, windproof and water-repellent, lightweight

100% polyester - 115 g/m<sup>2</sup>

Size: 3 - 14 age

- Windproof and water-repellent.
- Detachable hood with lining.
- Fastening with zip and internal storm flap, so the wind is kept out.
- Ribbed inner waistband to keep the cold out.
- Extra visibility with the help of reflectors.



o10

o3

o9



#### 18969-311 | Bib and Brace for children, four-way stretch, lightweight

93% nylon/7% elastane - 250 g/m<sup>2</sup>

Size: 3 - 14 age

- Four way stretch material provides unique freedom of movement and comfort.
- The water-repellent multifunctional stretch material combines a low weight with a very high durability.
- Ergonomically shaped trouser legs are constructed to follow the body's natural movements.
- Individual adjustment with adjustable waist.
- CORDURA® fabric reinforcements at exposed locations ensure hard wear and a long lifetime.

# Lightweight fleeces for children



1809

20209

33303

91010



## 18903-316 | Fleece Jumper for children with half zip

94% polyester/6% elastane - 260 g/m<sup>2</sup>

Size: 3 - 14 age

- The smooth surface of the fleece material prevents dust and dirt from sticking.
- Modern, close fit with great freedom of movement.
- Flexible and close-fitting high collar.
- Elastic at cuffs and waist.
- Extra visibility with the help of reflectors.









# Durable clothing for children







09

20209

33303

91010



WATER REPELLENT



REFLECTORS



**CLIMASCOT®**  
Lightweight Insulation

### 18915-318 | Jacket for children with CLIMASCOT®-lining, water-repellent

100% polyester - 260 g/m<sup>2</sup>

Size: 3 - 14 age

- Unique CLIMASCOT® insulation provides warmth without bulk. Lightweight, soft CLIMASCOT® insulation takes up almost no space when compressed.
- Water-repellent.
- Stretch fabric at the sides provides extra freedom of movement.
- Elastic at cuffs and waist.
- Extra visibility with the help of reflectors.



010



03



09



ULTIMATE STRETCH



LIGHTWEIGHT



WATER REPELLENT



ERGONOMIC FIT



REFLECTORS



**CORDURA®**  
F A B R I C

### 18979-311 | Trousers for children, four-way stretch, lightweight

93% nylon/7% elastane - 250 g/m<sup>2</sup>

Size: 3 - 14 age

- Four way stretch material provides unique freedom of movement and comfort.
- The water-repellent multifunctional stretch material combines a low weight with a very high durability.
- Ergonomically shaped trouser legs are constructed to follow the body's natural movements.
- CORDURA® fabric reinforcements at exposed locations ensure hard wear and a long lifetime.
- Extra visibility with the help of reflectors.



09 20209 33303 91010



**CLIMASCOT®** **CORDURA®**  
Lightweight Insulation F A B R I C

**18919-231 | Snowsuit for children with CLIMASCOT®-lining ,  
breathable, wind- and waterproof**  
100% polyester - 210 g/m<sup>2</sup>

Size: 3 - 8 age

- Breathable, wind and waterproof with taped seams.
- Unique CLIMASCOT® insulation provides warmth without bulk. Lightweight, soft CLIMASCOT® insulation takes up almost no space when compressed.
- Detachable hood with lining.
- CORDURA® fabric reinforcements at exposed locations ensure hard wear and a long lifetime.
- Extra long zip with storm flap on outside of lower leg so they can be easily pulled on over boots.



09 20209 33303 91010



**CLIMASCOT®**  
Lightweight Insulation

**18935-249 | Winter jacket for children with CLIMASCOT®-lining,  
windproof and water-repellent**  
100% polyester - 115 g/m<sup>2</sup>

Size: 3 - 14 age

- Windproof and water-repellent.
- Unique CLIMASCOT® insulation provides warmth without bulk. Lightweight, soft CLIMASCOT® insulation takes up almost no space when compressed.
- Detachable hood with lining.
- Fastening with zip and internal storm flap, so the wind is kept out.
- Ribbed inner waistband to keep the cold out.



# Winter clothes for children

## CLIMASCOT®

Lightweight Insulation



RECYCLED CONTENT



010



03



09



BREATHABLE



WINDPROOF



WATERPROOF



REFLECTORS



**CLIMASCOT®**  
Lightweight Insulation

**18990-231 | Over Trousers for children with CLIMASCOT®-lining, breathable, wind- and waterproof**

100% polyester - 210 g/m<sup>2</sup>

Size: 9 - 14 age

- Breathable, wind and waterproof with taped seams.
- Unique CLIMASCOT® insulation provides warmth without bulk. Lightweight, soft CLIMASCOT® insulation takes up almost no space when compressed.
- Elastic at waist and internal waist adjustment.
- Extra long zip with storm flap on outside of lower leg so they can be easily pulled on over boots.
- Extra visibility with the help of reflectors.

A woman with dark hair and a small flower clip is focused on sewing at a machine in a factory. The background shows other workers and sewing equipment, all under a blue color overlay.

# SA8000

SOCIALLY  
RESPONSIBLE  
PRODUCTION



# MASCOT is an ethically, socially and environmentally responsible company

As a global textiles company, we have an enormous responsibility to safeguard the people and the environment at our production sites and throughout the rest of our supply chain. This is a responsibility that we take very seriously. Is it for this reason that, more than ten years ago, we established our very own production sites in Vietnam and later in Laos, where we can ensure good, respectful and safe workplaces for our 2400 colleagues.

Here at MASCOT, we have always placed focus on ensuring that our customers get the best possible products. And by that we mean the best possible products in all aspects. It's not just about producing extremely durable products that last for a long time and thereby reduce the unnecessary consumption of new resources. The products also need to be manufactured by people who feel secure and comfortable at their workplace, and from materials that are transparent in their origins and which are able to attain the likes of Oeko-Tex® certification, etc.

MASCOT's products are solutions. And they are solutions that last! Both in terms of their wear resistance and with regards to their respect for people and the environment. Our core values are quality and decency – even in social and environmental contexts. Quality in products, solutions and agreements and decency understood as both conscientiousness and moral decency.

*The United Nations' sustainability goals give the world - and consumers - a shared lens through which to view sustainable production. See how a number of focus areas have already been incorporated in MASCOT's production of workwear on page 36-45.*



# 4.8

million products in stock

More than

# 98%

of all orders are dispatched  
within 24 hours

# 32,000

item numbers







# Highly automated logistics centre

When you buy one of our products, you also get security of supply and efficient service. MASCOT stocks all products in all sizes and colours, so you won't have to wait long for the products you want. We process orders within 24 hours from when you place your order and dispatch all products as quickly as possible. Our highly modern and automated logistics centre makes sure that all orders are sent out fast and flawless.

# MASCOT® SmartStore

MASCOT® SmartStore is an online logistics and ordering system. The system is developed to make your order management as fast and problem-free as possible. It is adapted for each company's product range and needs within workwear and personal protective gear. Contact your local MASCOT distributor to get started right away.







# Global Workwear Solution



MASCOT offers a seamless workwear solution for multinational companies, across borders. If your company employs more than 1,000 workwear users internationally, you'll get all the benefits of having only one contact point at MASCOT.



## Save time and money on administration with a global agreement

Do you run your business activities across borders? At MASCOT, we can simplify your workwear purchasing process and offer one solution for your company – globally.

### MASCOT manages your global workwear solution

- Fast, flawless worldwide delivery - with minimal administration
- Worldwide central project management - with one contact point
- A distribution network across Europe as well as resellers around the globe
- Uniformity in quality, products and services





# Printing and embroidery

MASCOT can provide printing and embroidery as an integrated part of your workwear order. Whatever solution you choose, adding a printed logo or a piece of embroidery to your order is really simple. We process all printing orders quickly and effectively, making sure that your employees receive their custom-branded clothing within good time.

There is naturally plenty of space for logos or embroidery on all products in the MASCOT® ACCELERATE range. Products of stretch materials must be printed with a stretchable logo.









# Individual product customisation

## — more than a standard assortment at your disposal

Do you have a large company with individual needs that aren't covered by MASCOT's standard assortment? Then you have the possibility for a customised MASCOT solution for your employees. You might need special sizes, an extra pocket for certain tools, or another fabric or colour. Or maybe you need one or more new product types or styles. Everything is possible, and our experts are at your disposal, so together, we will find the solution that suits you best.

At MASCOT, we categorise the many types of individual product customisations in terms of how extensive the changes are. For certain special order products, we have a minimum number of products you need to order, and the delivery time is of course also longer than with our standard assortment. This is agreed individually from order to order.

Do you need special orders or other individual customisations? Call your contact from MASCOT or your distributor. He/she can help you get just the workwear to match your needs.

# Find the correct size

The right size is crucial for the workwear's functionality, and for your comfort and safety. In MASCOT's assortment, many products have a fit that can be used by both men and women. In addition, you will find MASCOT products that are especially designed for women, as well as an assortment for children.

There are various measurements to be made depending on the item of clothing you require. If your measurements do not correspond directly to one size, you should generally move towards the right on the table and pick a larger size.

To find the right size, and get the most accurate measurement, we recommend that someone else measures you. Take the measurements close to the body, and when measuring the waist size, the measuring tape should be wrapped tightly around the body. Also remember to measure your leg length. In most of MASCOT's trousers, you can choose between three leg lengths.



## H. Head measure

Measure the circumference of the head.

## P. Collar size

Measured around the neck – 1 cm above the collar bone.

## A. Chest

Measured around the widest part of the chest.

## K1. Waist size

Measure the waist size just above the navel.

## K2. Waist size

Measure the waist size just below the navel.

## L. Hip size

Measured around the widest point of the hips.

## E. Inner seam

The length is measured on the inside of the leg from crotch to floor (barefoot).

## T. Height

Your full height.

**Try the clothes on!**  
**In that way, you are sure that the clothing fits as it should.**



# How to find your size in the measuring chart

For example: You are looking for trousers with a low waist.  
Your waist measurement (K2) is 92 cm.  
Find your measurement under K1/K2 in the chart. If your size fall between two sizes, you should choose the larger size.  
In this example you should choose 93 cm and therefore the size C52. Remember also to measure your leg length before you order.

T-shirts, sweatshirts, jackets and additional tops as well as boilersuits																						
	C42	C43	C44	C45	C46	C47	C48	C49	C50	C51	C52	C54	C56	C58	C60	C62	C64	C66	C68	C70	C72	C74
	XXS		XS		S				M		L		XL	2XL		3XL		4XL		5XL		6XL
A - Chest (cm)	84	86	88	90	92	94	96	98	100	102	104	108	112	116	120	124	128	132	136	140	144	148
A - Chest (inch)	33		34.5		36		38		39.5		41	42.5	44	45.5	47	49	50.5	52	53.5	55	56.5	58

Shirts																					
	C42	C43	C44	C45	C46	C47	C48	C49	C50	C51	C52	C54	C56	C58	C60	C62	C64	C66	C68	C70	C72
	XXS		XS		S				M		L		XL	2XL		3XL		4XL		5XL	
P - Collar size (cm)					37-38				39-40		41-42		43-44	45-46		47-48	49-50		51-52		
P - Collar size (inch)					14				15.5		16.5		17.5	18		19	19.5		20		

Trousers/bib & braces																					
	C42	C43	C44	C45	C46	C47	C48	C49	C50	C51	C52	C54	C56	C58	C60	C62	C64	C66	C68	C70	C72
	XXS		XS		S				M		L		XL	2XL		3XL		4XL		5XL	
K1/K2 Waist size (cm)*	68	70.5	73	75.5	78	80.5	83	85.5	88	90.5	93	98	103	108	113	118	123	128	133	138	143
K1/K2 Waist size (inch)*	27	28	28.5	29.5	30.5	31.5	32.5	33.5	34.5	35.5	36.5	38.5	40.5	42.5	44.5	46.5	48.5	50.5	52.5	54.5	56.5
L - Hip (cm)	90	92	94	96	98	100	102	104	106	108	110	114	118	122	126	130	134	138	142	146	150
L - Hip (inch)	35.5	36	37	38	38.5	39.5	40	41	41.5	42.5	43	45	46.5	48	49.5	51	52.5	54	56	57.5	59

\*Bib & braces are not available in odd-sizes.

E - Leg length (cm)	76	82	90
E - Leg length (inch)	30	32	35

Jeans									
K1/K2 - Waist size (inch)	29	30	31	32	33	34	36	38	40
K1/K2 - Waist size (cm)	73	76	78.5	81	83.5	86	91	96	101

E - Leg length (inch)	30	32	34	36
E - Leg length (cm)	76	82	87	92

Headgear										
	S		M		L		XL		2XL	
H - Head measure (cm)	54	55	56	57	58	59	60	61	62	63
H - Head measure (inch)	21	21.5	22	22.5	23	23.25	23.5	24	24.5	25

# WOMEN

MASCOT offers a wide range of products developed especially for women.

Tops										
	XS	S	M	L	XL	2XL	3XL	4XL	5XL	6XL
A - Chest (cm)	76	82	88	96	104	112	120	128	136	144
A - Chest (inch)	30	32	34.5	37.5	41	44	47	50.5	53.5	57
L - Hip (cm)	86	92	100	108	116	124	132	140	148	156
L - Hip (inch)	34	36	39.5	42.5	45.5	49	52	55	58	61.5

Across MASCOT's assortment you will find women's trousers, shorts and skirts in two different fits. It is your body's measurements that determine which fit you should choose. The two fits are called: DIAMOND and PEARL.

Two steps to find the trousers/skirts/shorts that are just perfect for you:

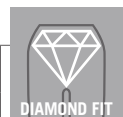
## 1) Find your fit

Your MASCOT fit will depend on a combination of your waist size (the narrowest part) and your hip measurement (the widest part).

The general rule of thumb is that if there is a difference of more than 20 centimetres between your hip and your waist measurements then you should opt for a DIAMOND fit. If the difference is less than 20 centimetres, on the other hand, then you should choose PEARL.

## 2) Find your size

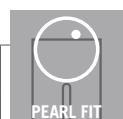
You can find your size by measuring the circumference of your hip at its widest point. Check the table below your fit: Determine your size based on the circumference of your hip.



### Ladies trousers and skirts

DIAMOND fit: A difference between waist and hip measurements of more than 20 cm.

	C34	C36	C38	C40	C42	C44	C46	C48	C50	C52	C54	C56
	S	M		L		XL	2XL		3XL	4XL	5XL	6XL
Waist size (cm)	74	78	82	86	90	94	98	104	110	116	122	128
Waist size (inch)	29	30.5	32	34	35.5	37	38.5	41	43.5	45.5	48	50.5
L - Hip (cm)	100	104	108	112	116	120	124	130	136	142	148	154
L - Hip (inch)	39.5	41	42.5	44	45.5	47	49	51	53.5	56	58	60.5



### Ladies trousers and skirts

PEARL fit: There is a small difference between waist and hip measurements.

	C34	C36	C38	C40	C42	C44	C46	C48	C50	C52	C54	C56
	S	M		L		XL	2XL		3XL	4XL	5XL	6XL
Waist size (cm)	78	82	86	90	94	98	104	110	116	122	128	136
Waist size (inch)	30.5	32	34	35.5	37	38.5	41	43.5	45.5	48	50.5	53.5
L - Hip (cm)	95	98	101	104	107	110	115	120	125	130	135	140
L - Hip (inch)	37.5	38.5	39.5	41	42	43.5	45	47	49	51	53	55

E - Leg length (cm)	76	82
E - Leg length (inch)	30	32

**Remember also to measure the leg length. All MASCOT's ladies trousers are available in two leg lengths: 76 cm and 82 cm.**



# CHILDREN

In MASCOT’s assortment you will also find products for children. To find the right size, you should, as a rule, choose the size based on the height of the child.



Children						
Height (cm)	104	116	128	140	152	164
Age (years)	3-4	5-6	7-8	9-10	11-12	13-14
Chest (cm)	54	58	62	68	74	80
Chest (inch)	21	23	24.5	26.5	29	31.5
Waist size (cm)	50	52	54	58	62	66
Waist size (inch)	19.5	20.5	21.5	23	24.5	26
Hip (cm)	58	62	66	72	78	84
Hip (inch)	23	24.5	26	28.5	30.5	33

# MASCOT – a quick, easy and quality conscious choice

It is easy to do business with MASCOT. You have an entire assortment of workwear and safety footwear at your disposal – from head to toe and for all seasons. You only need to shop in one place, and you'll get international support all over the world. In addition, you can automate many aspects of your trade with MASCOT, as you wish.

It is also quick to do business with MASCOT. We offer user-friendly, online ordering platforms that will save you time and minimise errors. We process orders from all over the world within 24-48 hours from a fully automated, ultramodern logistics centre with a continuous inventory of more than 4.8 million products. Flawless and fast – and, if you wish, we can man-pack the workwear.

If you choose MASCOT, you also make a quality conscious decision. It is not just that the workwear and safety footwear are thoroughly tested and of the

highest quality, it is also that MASCOT offers you the most efficient ordering and service solutions. Last but not least, it means that when you buy products from MASCOT, you know they are manufactured under good working conditions. The vast majority of MASCOT's products are manufactured on our own CSR-certified factories in Vietnam and Laos. We guarantee good working conditions – and socially responsible workwear.

When you do business with MASCOT, you do business with a company that continuously develops its products, services and solutions. We constantly focus on the opportunities and limitations of our customers and potential customers. These inputs are the focal point in the development of new products and solutions from MASCOT. We will be one step ahead to deliver the best solutions to our customers because that means our customers also are a step ahead.





**2800+  
EMPLOYEES**



**OVER 3500  
DISTRIBUTORS  
WORLDWIDE**



**INTERNATIONAL  
AWARDS**



**FOUNDED IN  
1982**



**FAMILY  
OWNED**



**4 FACTORIES  
IN LAOS AND  
VIETNAM**

**32000  
ITEM  
NUMBERS**



**+600 UNIQUE  
PRODUCTS**



**4,800,000  
PRODUCTS  
IN STOCK**



**EFFECTIVE  
FLOW WITH  
SAP**



**SALES STAFF IN  
15 EUROPEAN  
COUNTRIES**



**DELIVERY  
RELIABILITY  
AT 98%**

**SA8000  
SOCIALLY  
RESPONSIBLE  
PRODUCTION**

**ISO 9001  
CERTIFIED**

**MASCOT®  
WORKWEAR**



## Mascot International A/S

Silkeborgvej 14 · DK-7442 Engesvang  
Tel. +45 87 24 47 00 · Customer service +44 161 504 0960  
info@mascotworkwear.com · www.mascotworkwear.com

MASCOT® is a registered trademark, owned by Mascot International A/S. - No liability accepted for product alterations, printing errors and inability to supply or deliver.

**MASCOT®** | **Audi Sport**  
**WORKWEAR** | Official Supplier



[www.facebook.com/MascotWorkwear](https://www.facebook.com/MascotWorkwear)



[www.linkedin.com/company/mascot-international-as](https://www.linkedin.com/company/mascot-international-as)



[www.youtube.com/mascotinternational](https://www.youtube.com/mascotinternational)



[www.instagram.com/mascot\\_workwear/](https://www.instagram.com/mascot_workwear/)

