

WALKING IN A NEW **ERA**



ou2

PRODUCED BY SKL

workshoes

WALKING IN A NEW ERA



SKL RELIABILITY HAS A NAME: OU2.

A RANGE OF SHOES DESIGNED TO MAKE YOUR WORK EASY AND COMFORTABLE AND TO PROTECT YOUR HEALTH. OU2 IS THE MOST POPULAR MODEL IN THE SKL RANGE, BE IT SPORTY OR ELEGANT. A COMPREHENSIVE RANGE FOR EVERY TYPE OF JOB.



OU2

Health

It is an innovative safety shoe characterized by a new concept sole designed to allow the foot to best adapt to its most natural position, with significant benefits for the back and the joints.

A correct posture means well-being and feeling of less fatigue during working hours.

Technology

The OU2 footwear are manufactured using an innovative construction technology, together with technical materials which are particularly lightweight, breathable, durable and long lasting. The result is a shoe that combines ergonomics, performance, safety and comfort at the highest levels. An extremely flexible, soft and light shoe, who allows the foot to move freely and improves the support, with an unparalleled anti-fatigue effect.





UPPER

Made of top quality leather and innovative and lightweight technical fabrics. Anatomically padded in all points of greater pressure, it is Dry Pol®-lined, a hydrophilic, damp-proof fabric which provides maximum transpiration of the foot.



TOE

Some items of the range have an aluminium alloy toe while others a steel toe, all painted with epoxy powder, with a breathable and padded internal lining in Dry Pol® fabric, for a higher comfort even when the foot is bent.



LAYER

The entire range has a puncture-resistant textile layer Enigma T-System, made with a lightweight and high-strength fiber with an extremely high puncture-resistance. It ensures maximum protection while offering a high level of comfort.



INSOLE

Every shoe comes with a breathable, anti-static, removable insole, made with multi-layer materials and with antibacteria treatment. It helps to make these shoes extremely comfortable.



OUTSOLE

It is made of a first quality bi-density polyurethane compound (high-density tread - low-density midsole), which provides longer duration product life. It is anti-static and resistant to oils, hydrocarbons and abrasion.

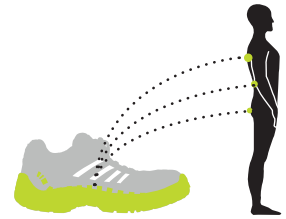


IMPROVED POSTURE

The shoes with the OU2 sole allow an optimal support of the foot and facilitate the proper position of the spinal column. A correct posture prevents lumbar aching and cervical pains.

OPTIMAL SUPPORT

This type of sole promotes a correct posture.

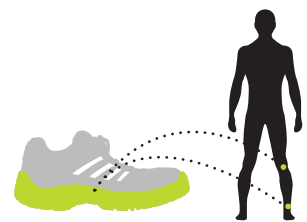


LESS LOAD ON JOINTS

The high quality of the polyurethane compound used in the sole, ensures a perfect shock absorbtion, reducing stress on the joints and favouring comfort.

LESS LOAD

Stress reduction on the lower joints, in favour of a better comfort.

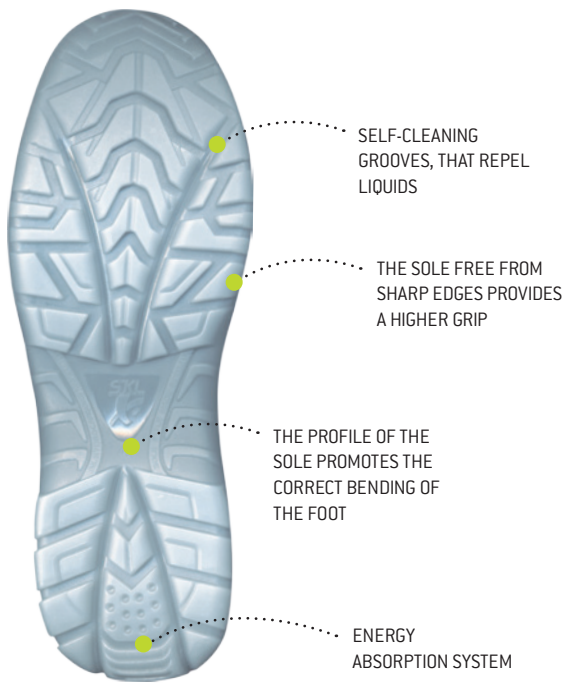


THE PENDULUM EFFECT

Thanks to a cradle-shaped sole it creates a pendulum effect during walking which promotes muscle activity and posture.



REVOLUTIONARY OUTSOLE



The revolutionary design of the tread makes these shoes suitable to be used on all terrains, even in the presence of liquids.

Designed to be free from sharp edges on the sides where the shoes touch the ground, it provides a better grip even in the most extreme uses.

It offers a proper and correct bending in relation to the movements of the foot and an energy absorption system in the heel.

The “rounded” shape provides a perfect base of support and therefore more stability even when the foot is bent.





Art. 683N S1P



Art. 684N S1P



Art. 796N S1P



Art. 696N S1P



Art. 681N S1P



Art. 680N S1P



Art. 610N S1P



Art. 620N S1P



OU2 COLLECTION



Art. 621N S1P



Art. 722N S1P



Art. 712N S3



Art. 723N S3



Art. 710N S3



Art. 720N S3



Art. 724N S3



Art. 919 S3



Art. 916N S3



Art. 917 S3





OU2 683N

Protective low sport shoe in suede split leather

OU2 683N S1P - SRA

UPPER	Suede split leather Breathable, ladderproof, technical fabric inserts
INTERNAL LINING	Breathable, hydrophilic, anti-damp, Dry Pol® fabric
INSOLE	Removable, antistatic, with antibacterial treatment
OUTSOLE	Dual density PU
TOE	Aluminium
MIDSOLE	Textile Enigma T-System
CLOSING	Laces
COLOUR	Grey/Lime
SIZE	36 – 47



510192



OU2 684N

Protective low sport shoe in suede split leather

OU2 684N S1P - SRA

UPPER	Suede split leather Highly breathable and res- istant synthetic micro mesh TPU reinforced toe
INTERNAL LINING	Breathable, hydrophilic, anti-damp, Dry Pol® fabric
INSOLE	Removable, antistatic, with antibacterial treatment
OUTSOLE	Dual density PU
TOE	Aluminium
MIDSOLE	Textile Enigma T-System
CLOSING	Laces
COLOUR	Grey/Silver
SIZE	39 – 47



510194



OU2 796N

Protective low sport shoe in greased full grain leather

OU2 796N S1P - SRA

UPPER	Perforated, in greased full grain leather
INTERNAL LINING	Breathable, hydrophilic, anti-damp, Dry Pol® fabric
INSOLE	Removable, antistatic, with antibacterial treatment
OUTSOLE	Dual density PU
TOE	Steel
MIDSOLE	Textile Enigma T-System
CLOSING	Laces
COLOUR	Brown
SIZE	39 – 47



510224

OU2 **696N** S1P - SRA

UPPER	Perforated, in suede split leather
INTERNAL LINING	Breathable, hydrophilic, anti-damp, Dry Pol® fabric
INSOLE	Removable, antistatic, with antibacterial treatment
OUTSOLE	Dual density PU
TOE	Steel
MIDSOLE	Textile Enigma T-System
CLOSING	Laces
COLOUR	Beige
SIZE	36 – 48



510212



OU2 **696N**

Protective low sport shoe in suede split leather

OU2 **681N** S1P - SRA

UPPER	Suede split leather Breathable technical fabric inserts
INTERNAL LINING	Breathable, hydrophilic, anti-damp, Dry Pol® fabric
INSOLE	Removable, antistatic, with antibacterial treatment
OUTSOLE	Dual density PU
TOE	Steel
MIDSOLE	Textile Enigma T-System
CLOSING	With velcro
COLOUR	Olive green
SIZE	39 – 47



510147



OU2 **681N**

Protective sandal in suede split leather

OU2 **680N** S1P - SRA

UPPER	Suede split leather Breathable technical fabric inserts
INTERNAL LINING	Breathable, hydrophilic, anti-damp, Dry Pol® fabric
INSOLE	Removable, antistatic, with antibacterial treatment
OUTSOLE	Dual density PU
TOE	Steel
MIDSOLE	Textile Enigma T-System
CLOSING	elastic "sleep-on" type
COLOUR	Olive green
SIZE	39 – 47



510209



OU2 **680N**

Protective low sport shoe in suede split leather



OU2 610N

Protective low trekking shoe in suede split leather/Cordura®

OU2 610N S1P - SRA

UPPER	Suede split leather Cordura® inserts
FODERA INTERNA	Breathable, hydrophilic, anti-damp, Dry Pol® fabric
INSOLE	Removable, antistatic, with antibacterial treatment
OUTSOLE	Dual density PU
TOE	Steel
MIDSOLE	Textile Enigma T-System
CLOSING	Laces
COLOUR	Grey
SIZE	39 – 47



510222



OU2 620N

Protective high trekking shoe in suede split leather/Cordura®

OU2 620N S1P - SRA

UPPER	Suede split leather Cordura® inserts
FODERA INTERNA	Breathable, hydrophilic, anti-damp, Dry Pol® fabric
INSOLE	Removable, antistatic, with antibacterial treatment
OUTSOLE	Dual density PU
TOE	Steel
MIDSOLE	Textile Enigma T-System
CLOSING	Laces + quick take-off device
COLOUR	Grey
SIZE	36 – 48



515172



OU2 621N

Protective high trekking shoe in suede split leather/Cordura®

OU2 621N S1P - SRA

UPPER	Suede split leather Cordura® inserts
FODERA INTERNA	Breathable, hydrophilic, anti-damp, Dry Pol® fabric
INSOLE	Removable, antistatic, with antibacterial treatment
OUTSOLE	Dual density PU
TOE	Steel
MIDSOLE	Textile Enigma T-System
CLOSING	Laces
COLOUR	Beige
SIZE	39 – 47



515174

OU2 722N S1P - SRA

UPPER	Perforated, in greased full grain leather
FODERA INTERNA	Breathable, hydrophilic, anti-damp, Dry Pol® fabric
INSOLE	Removable, antistatic, with antibacterial treatment
OUTSOLE	Dual density PU
TOE	Steel
MIDSOLE	Textile Enigma T-System
CLOSING	Laces + quick take-off device
COLOUR	Black
SIZE	39 – 47



515168



OU2 722N

Protective high sport shoe in perforated greased full grain leather

OU2 712N S3 - SRA

UPPER	Full grain leather
FODERA INTERNA	Breathable, hydrophilic, anti-damp, Dry Pol® fabric
INSOLE	Removable, antistatic, with antibacterial treatment
OUTSOLE	Dual density PU
TOE	Steel
MIDSOLE	Textile Enigma T-System
CLOSING	Laces
COLOUR	Black
SIZE	36 – 48



510218



OU2 712N

Protective low sport shoe in full grain leather

OU2 723N S3 - SRA

UPPER	Greased full grain leather
FODERA INTERNA	Breathable, hydrophilic, anti-damp, Dry Pol® fabric
INSOLE	Removable, antistatic, with antibacterial treatment
OUTSOLE	Dual density PU
TOE	Steel
MIDSOLE	Textile Enigma T-System
CLOSING	Laces + quick take-off device
COLOUR	Brown
SIZE	39 – 47



515180



OU2 723N

Protective high sport shoe in greased full grain leather



OU2 710N

Protective low trekking shoe in full grain leather/Cordura®

OU2 710N S3 - SRA

UPPER	Full grain leather Cordura® inserts and reflective material inserts
FODERA INTERNA	Breathable, hydrophilic, anti-damp, Dry Pol® fabric
INSOLE	Removable, antistatic, with antibacterial treatment
OUTSOLE	Dual density PU
TOE	Steel
MIDSOLE	Textile Enigma T-System
CLOSING	Laces
COLOUR	Black
SIZE	39 – 47



510220

CE
EN ISO 20345



OU2 720N

Protective high trekking shoe in full grain leather/Cordura®

OU2 720N S3 - SRA

UPPER	Full grain leather Cordura® inserts and reflective material inserts Reinforced toe in black bycast, with triple stitching in Kevlar®
FODERA INTERNA	Breathable, hydrophilic, an- ti-damp, Dry Pol® fabric
INSOLE	Removable, antistatic, with antibacterial treatment
OUTSOLE	Dual density PU
TOE	Steel
MIDSOLE	Textile Enigma T-System
CLOSING	Laces, quick take-off device
COLOUR	Black
SIZE	36 – 48



515170

CE
EN ISO 20345



OU2 724N

Protective high shoe in full grain leather

OU2 724N S3 - SRA

UPPER	Full grain leather
FODERA INTERNA	Breathable, hydrophilic, anti-damp, abrasion-resistant Teklife® fabric
INSOLE	Removable, antistatic, with antibacterial treatment
OUTSOLE	Dual density PU
TOE	Steel
MIDSOLE	Textile Enigma T-System
CLOSING	Laces
COLOUR	Black
SIZE	39 – 47



515182

CE
EN ISO 20345

OU2 919 S3-HRO-SRC

UPPER	Greased nubuck With protective Dynamic Control system
FODERA INTERNA	Breathable, hydrophilic, anti-damp, abrasion-resistant Teklife® fabric
INSOLE	Removable, preformed, antistatic, breathable, with antibacterial treatment
OUTSOLE	Dual component polyurethane/rubber Vibram®
TOE	Thermoplastic material
MIDSOLE	Textile Enigma T-System
CLOSING	Laces
COLOUR	Brown
SIZE	39 – 47



515183



OU2 916N S3-CI-SRA

UPPER	Greased full grain leather
FODERA INTERNA	Synthetic fur
INSOLE	Removable, antistatic, with antibacterial treatment
OUTSOLE	Dual density PU
TOE	Steel
MIDSOLE	Textile Enigma T-System
COLOUR	Brown
SIZE	39 – 47



515500



OU2 917 S3-CI-HRO-SRC

UPPER	Water-repellent pigmented leather, internally lined in insulating Thinsulate® With protective Dynamic Control system
FODERA INTERNA	Breathable Air mesh 3D, hydrophilic and anti-moisture
INSOLE	Removable, preformed, antistatic, breathable felt insulating insole, which keeps the heat of the foot
OUTSOLE	Dual component polyurethane/rubber Vibram®
TOE	Thermoplastic material
MIDSOLE	Textile Enigma T-System
COLOUR	Black
SIZE	39 – 47



535092



OU2 919

Protective high shoe in greased nubuck



OU2 916N

Protective boot in greased full grain leather



OU2 917

Protective boot in water-repellent pigmented leather

